

M2K

adani | Realty

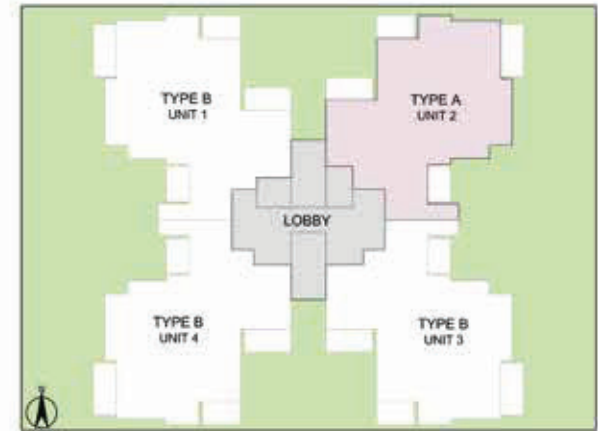


OYSTER | GRANDÉ

FLOOR PLAN

Call: +918586866824

3 BHK + STUDY + SERVANT ROOM - TYPE A TOWER - B



TOWER PLAN



CLUSTER PLAN

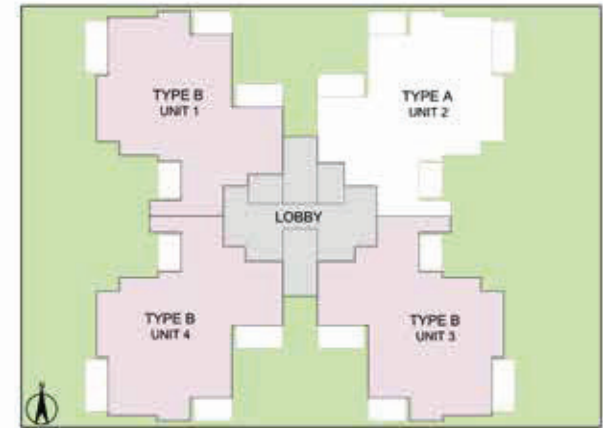


KEY PLAN



SALEABLE AREA - 2598 sq.ft. (241.36 sq.mt.)
UNIT NO. : B002 - B2102

3 BHK + STUDY + SERVANT ROOM - TYPE B TOWER - B



TOWER PLAN



CLUSTER PLAN



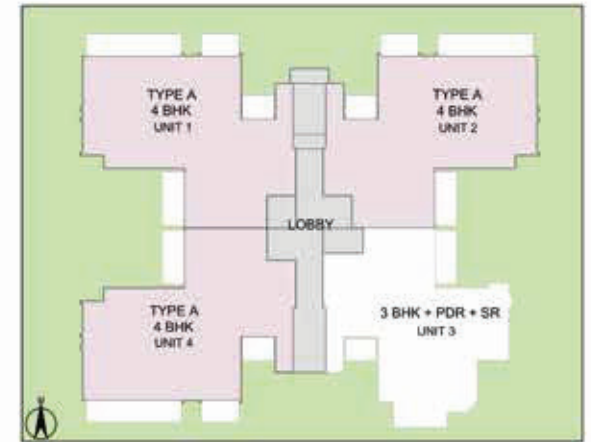
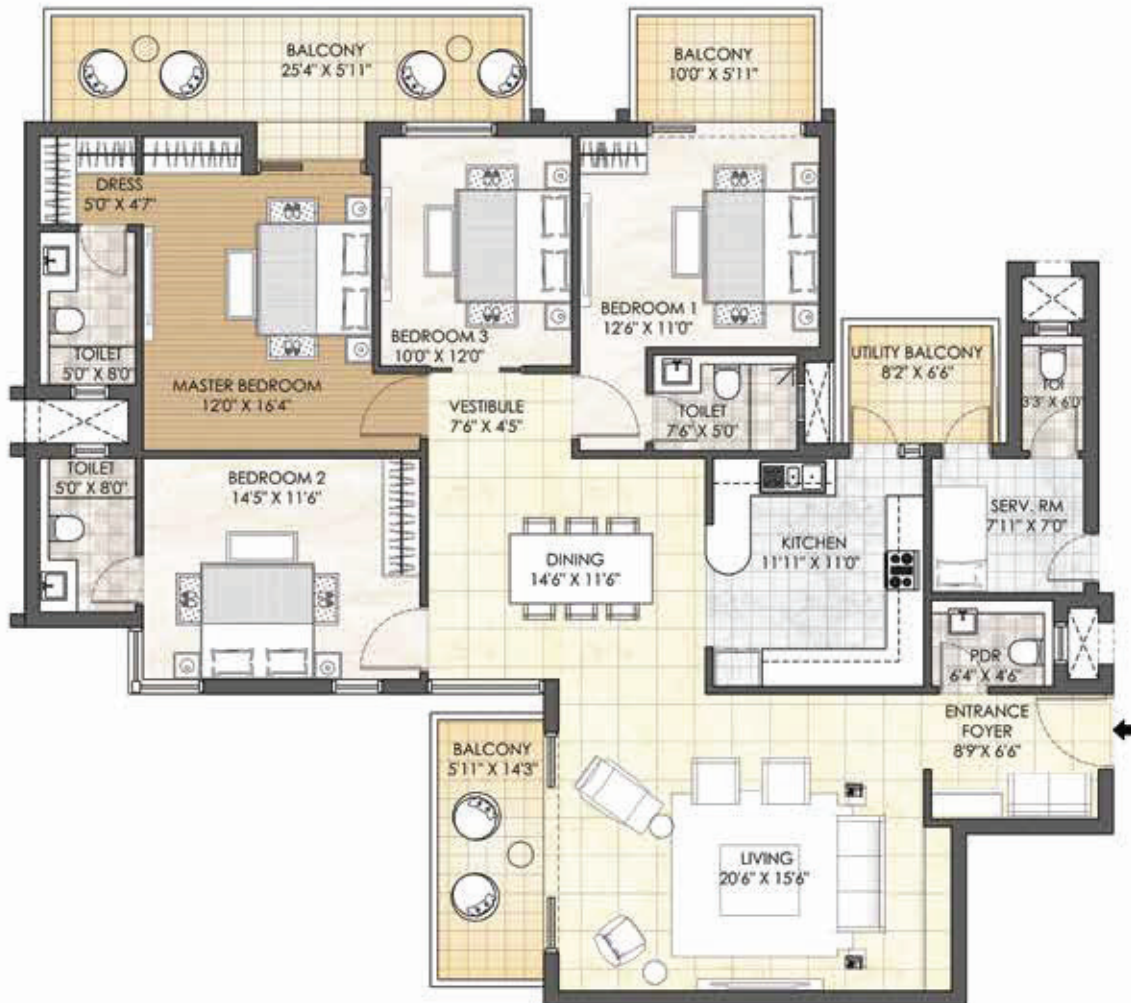
KEY PLAN



SALEABLE AREA - 2579 sq.ft. (239.59 sq.mt.)

UNIT NO. : B001 - B2101
B003 - B2103
B104 - B2104

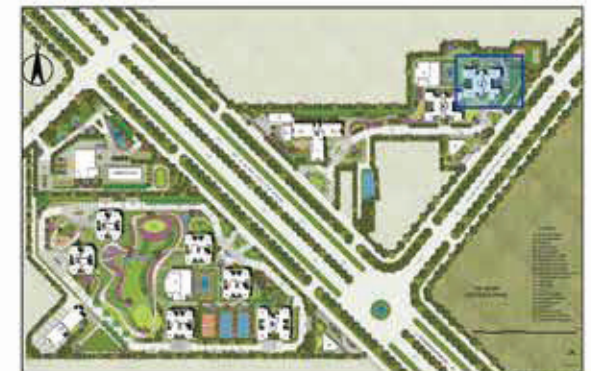
4 BHK + POWDER ROOM + SERVANT ROOM - TYPE A TOWER - J



TOWER PLAN



CLUSTER PLAN



KEY PLAN

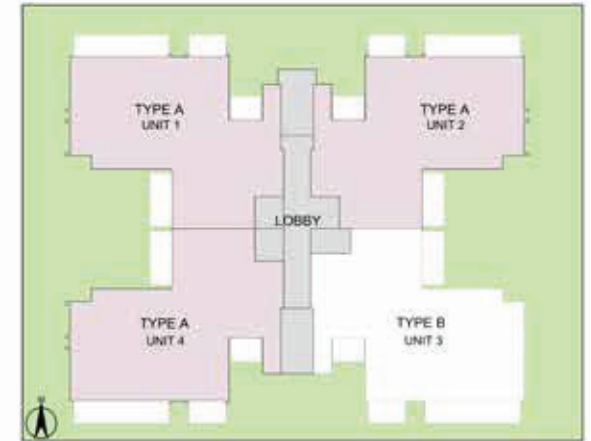


SALEABLE AREA - 3198 sq.ft. (297.10 sq.mt.)

UNIT NO. : J101 - J2101
 J102 - J2102
 J104 - J2104

In the interest of maintaining high standards, all floor plans, areas, dimensions, specifications, amenities, images etc. are indicative and are subject to change as decided by the Developer or by any Competent Authority. Soft furnishing, furniture and gadgets are not part of the offering.

4 BHK + POWDER ROOM + SERVANT ROOM - TYPE A TOWER - H



TOWER PLAN



CLUSTER PLAN



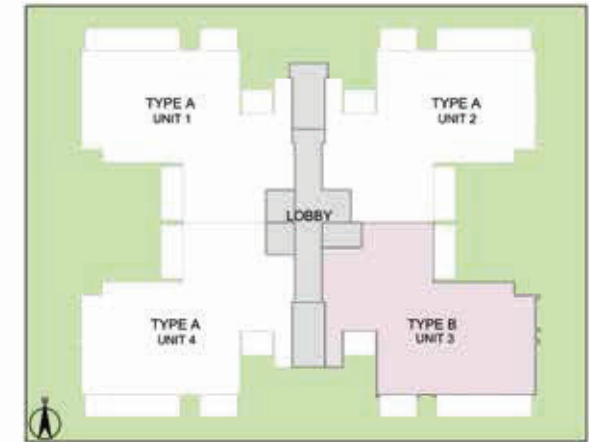
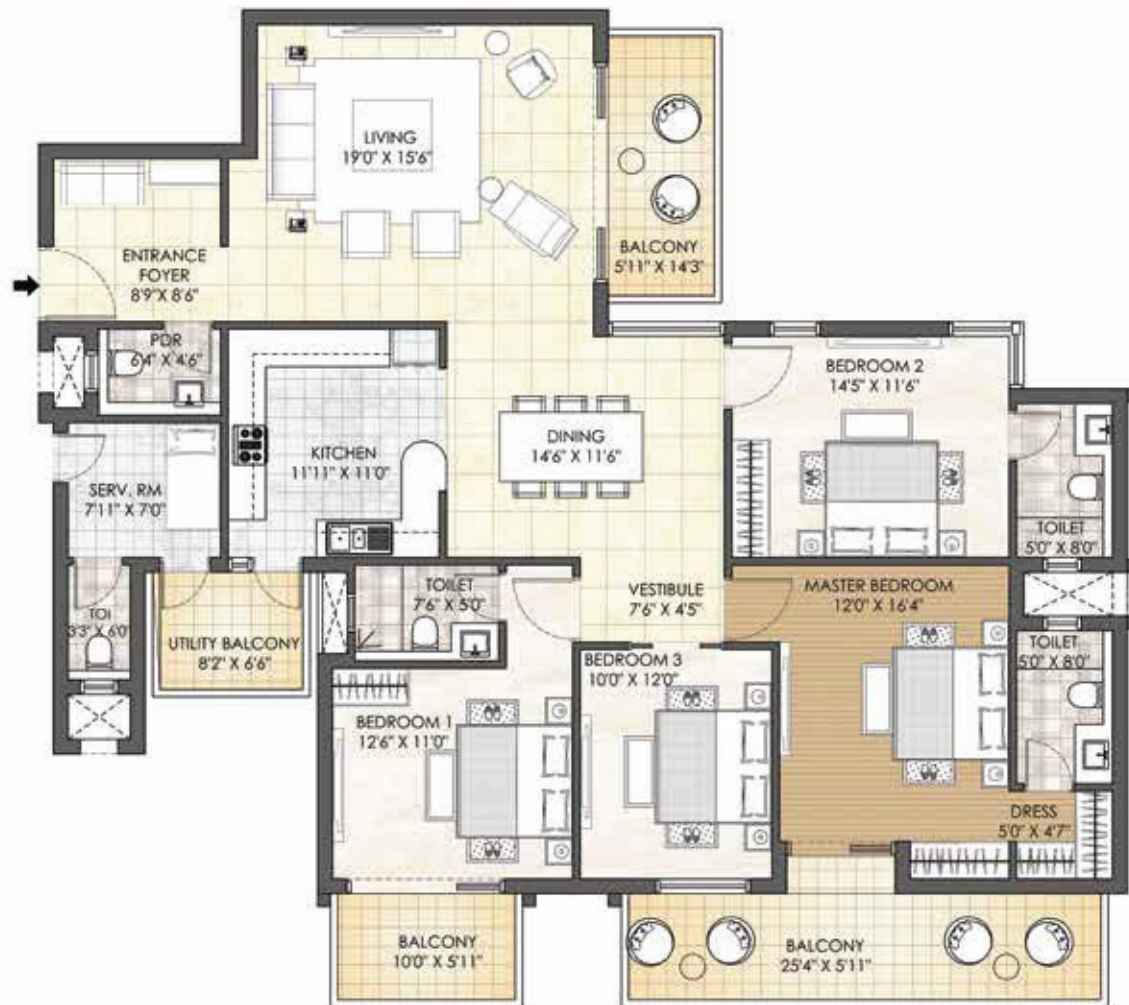
KEY PLAN



SALEABLE AREA - 3198 sq.ft. (297.10 sq.mt.)

UNIT NO. : H101 - H2101
H102 - H2102
H104 - H2104

4 BHK + POWDER ROOM + SERVANT ROOM - TYPE B TOWER - H



TOWER PLAN



CLUSTER PLAN



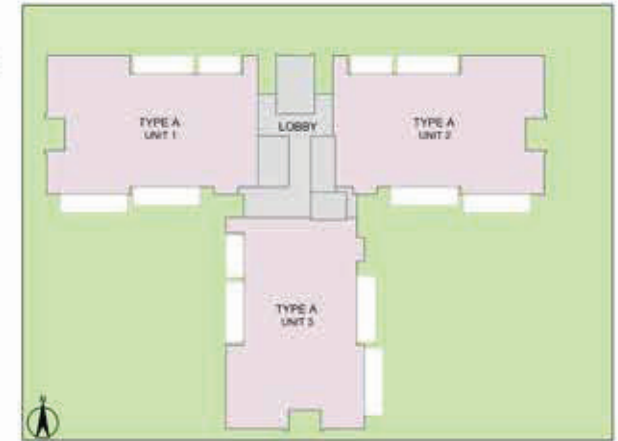
KEY PLAN



SALEABLE AREA - 3188 sq.ft. (296.17 sq.mt.)

UNIT NO. : H103 - H2103

4 BHK + FAMILY LOUNGE + POWDER ROOM + SERVANT ROOM - TYPE-A TOWER - G



TOWER PLAN



CLUSTER PLAN



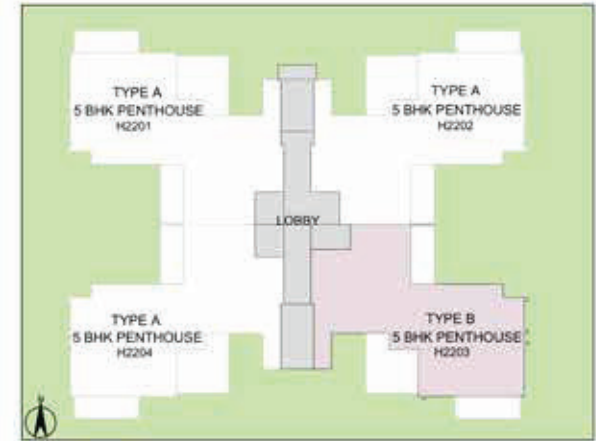
KEY PLAN



SALEABLE AREA - 4548 sq.ft. (422.52 sq.mt.)
 UNIT NO. : G101 - G2201
 G102 - G2202
 G103 - G1203

In the interest of maintaining high standards, all floor plans, areas, dimensions, specifications, amenities, images etc. are indicative and are subject to change as decided by the Developer or by any Competent Authority. Soft furnishing, furniture and gadgets are not part of the offering.

PENTHOUSE - 5BHK - TYPE B
TOWER - H
 LOWER PENTHOUSE PLAN



TOWER PLAN



CLUSTER PLAN



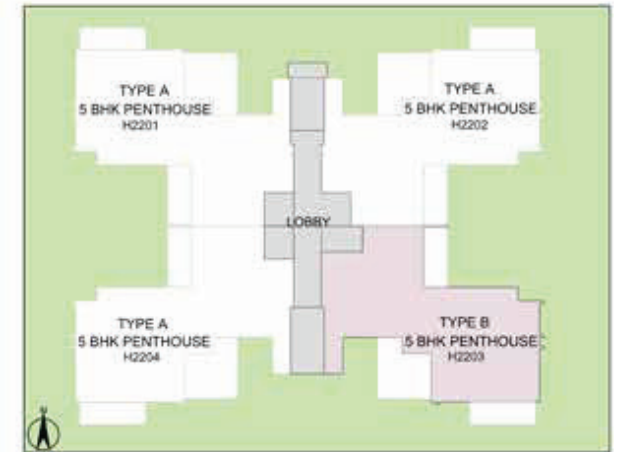
KEY PLAN



SALEABLE AREA - 5790 sq.ft. (537.90 sq.mt.)
UNIT NO. : H2203

In the interest of maintaining high standards, all floor plans, areas, dimensions, specifications, amenities, images etc. are indicative and are subject to change as decided by the Developer or by any Competent Authority. Soft furnishing, furniture and gadgets are not part of the offering.

**PENTHOUSE - 5BHK - TYPE B
TOWER - H
UPPER PENTHOUSE PLAN**



TOWER PLAN



CLUSTER PLAN



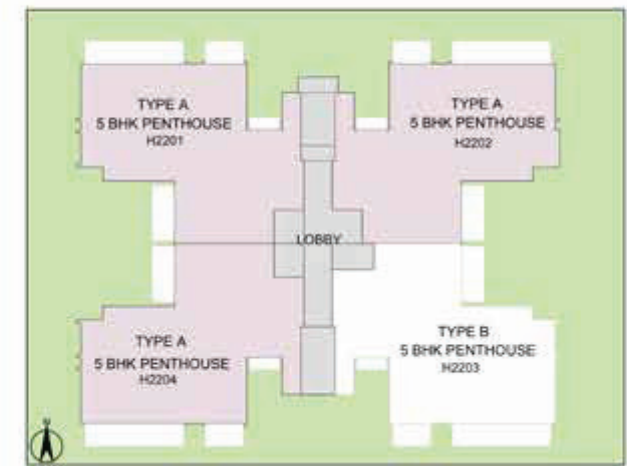
KEY PLAN



SALEABLE AREA - 5790 sq.ft. (537.90 sq.mt.)

UNIT NO. : H2203 (Upper Penthouse)

PENTHOUSE - 5BHK - TYPE A
TOWER - H
LOWER PENTHOUSE PLAN



TOWER PLAN



CLUSTER PLAN



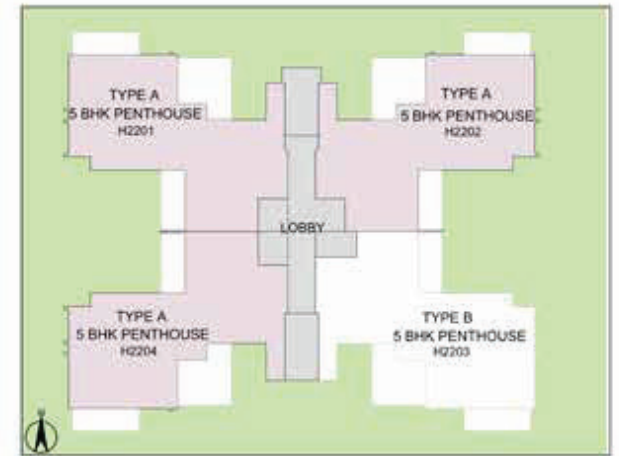
KEY PLAN



SALEABLE AREA - 5826 sq.ft. (541.25 sq.mt.)

UNIT NO. : H2201, H2202, H2204

PENTHOUSE - 5BHK - TYPE A
TOWER - H
 UPPER PENTHOUSE PLAN



TOWER PLAN



CLUSTER PLAN

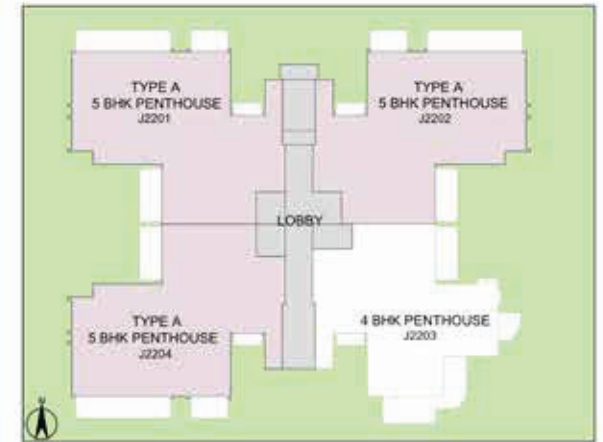


KEY PLAN



SALEABLE AREA - 5826 sq.ft. (541.25 sq.mt.)
 UNIT NO. : H2201, H2202, H2204 (Upper Penthouse)

**PENTHOUSE - 5BHK - TYPE A
TOWER - J**
LOWER PENTHOUSE PLAN



TOWER PLAN



CLUSTER PLAN

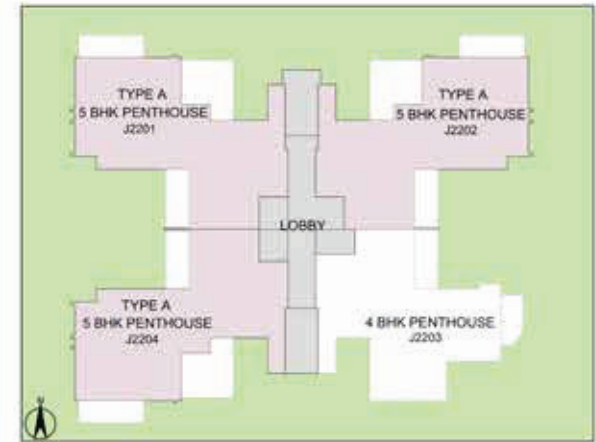


KEY PLAN



SALEABLE AREA - 5826 sq.ft. (541.25 sq.mt.)
UNIT NO. : J2201, J2202, J2204

**PENTHOUSE - 5BHK - TYPE A
TOWER - J
UPPER PENTHOUSE PLAN**



TOWER PLAN



CLUSTER PLAN



KEY PLAN



SALEABLE AREA - 5826 sq.ft. (541.25 sq.mt.)
UNIT NO. : J2201, J2202, J2204 (Upper Penthouse)

In the interest of maintaining high standards, all floor plans, areas, dimensions, specifications, amenities, images etc. are indicative and are subject to change as decided by the Developer or by any Competent Authority. Soft furnishing, furniture and gadgets are not part of the offering.

PENTHOUSE - 5BHK - TYPE - C
TOWER - G
LOWER PENTHOUSE PLAN



TOWER PLAN



CLUSTER PLAN



KEY PLAN



SALEABLE AREA - 7283 sq.ft. (676.61 sq.mt.)
UNIT NO. : G2301, G2302

PENTHOUSE - 5BHK - TYPE - C
 TOWER - G
 UPPER PENTHOUSE PLAN



TOWER PLAN



CLUSTER PLAN



KEY PLAN



SALEABLE AREA - 7283 sq.ft. (676.61 sq.mt.)
 UNIT NO. : G2301, G2302 (Upper Penthouse)

In the interest of maintaining high standards, all floor plans, areas, dimensions, specifications, amenities, images etc. are indicative and are subject to change as decided by the Developer or by any Competent Authority. Soft furnishing, furniture and gadgets are not part of the offering.



Thank You

Call: +918586866824