



KID CENTRIC HOMES
Behtar Parvarish Ka Pata

+918586866824



 **ashiana
anmol**
Sohna Road, South Gurgaon



Artistic representation of the Learning Hub

Because if your children discover their passions early, they're at an advantage

One child could have a natural talent for dance. Another child's true potential could be music. With the Learning Hub, every child can discover his or her real passion early in life. Ashiana Anmol brings a contemporary, kid-centric vision to life. So your children will know how to find their own way, and get ahead in life. That's why in NCR, Ashiana Anmol is your, Behtar Parvarish Ka Pata.

1st
India's
first
Learning
Hub

+918586866824

1st
India's
first
Learning
Hub



+918586866824



Its got everything that can inspire your kids to be what they want to be

Ashiana Anmol creates a kid centric world that will inspire your children to discover their true potential, by sparking their true passions. This enabling environment will stimulate a holistic development of intellect, creativity, self-expression and confidence. Ashiana Anmol will provide the right mahaul for your kids to fly.

+918586866824

Amenities that give your children options to figure out their passions

Some children might excel at tennis. Others at theatre. Ashiana Anmol has a world of amenities so your child can decide. We believe that if children are encouraged to follow their heart, they will excel. Ashiana Anmol has amenities that are designed to create well-rounded individuals with diverse interests. You can be sure that your children will grow up with a clear idea of what they want to achieve in life.



Actual shot of Ashiana property

+918586866824



Shot on Ashiana property

Watch your children fall in love with books, at the Book Café

At Ashiana Anmol, your children will discover new passions like reading. We will have a Book Café, with a thoughtfully planned selection of books, that will help your child fall in love with books, and the nourishing habit of reading.



+918586866824



Shot on Ashiana property

A virtual sports academy

Indoor badminton. Tennis. Gym. Skating. Cricket nets. Half-court basketball. Your child's heart will beat faster at the thought of engaging in a competitive sport, rather than notifications on a smart phone. This will be a truly transformative environment in which they will learn teamwork, sportsmanship, competitiveness, and the art of not just winning, but also losing gracefully.



+918586866824



Water babies!

Ashiana Anmol will have a world-class swimming pool with a professional coach. So your children can take the plunge into a rewarding activity that builds both physical and mental fitness, and is great fun as well.

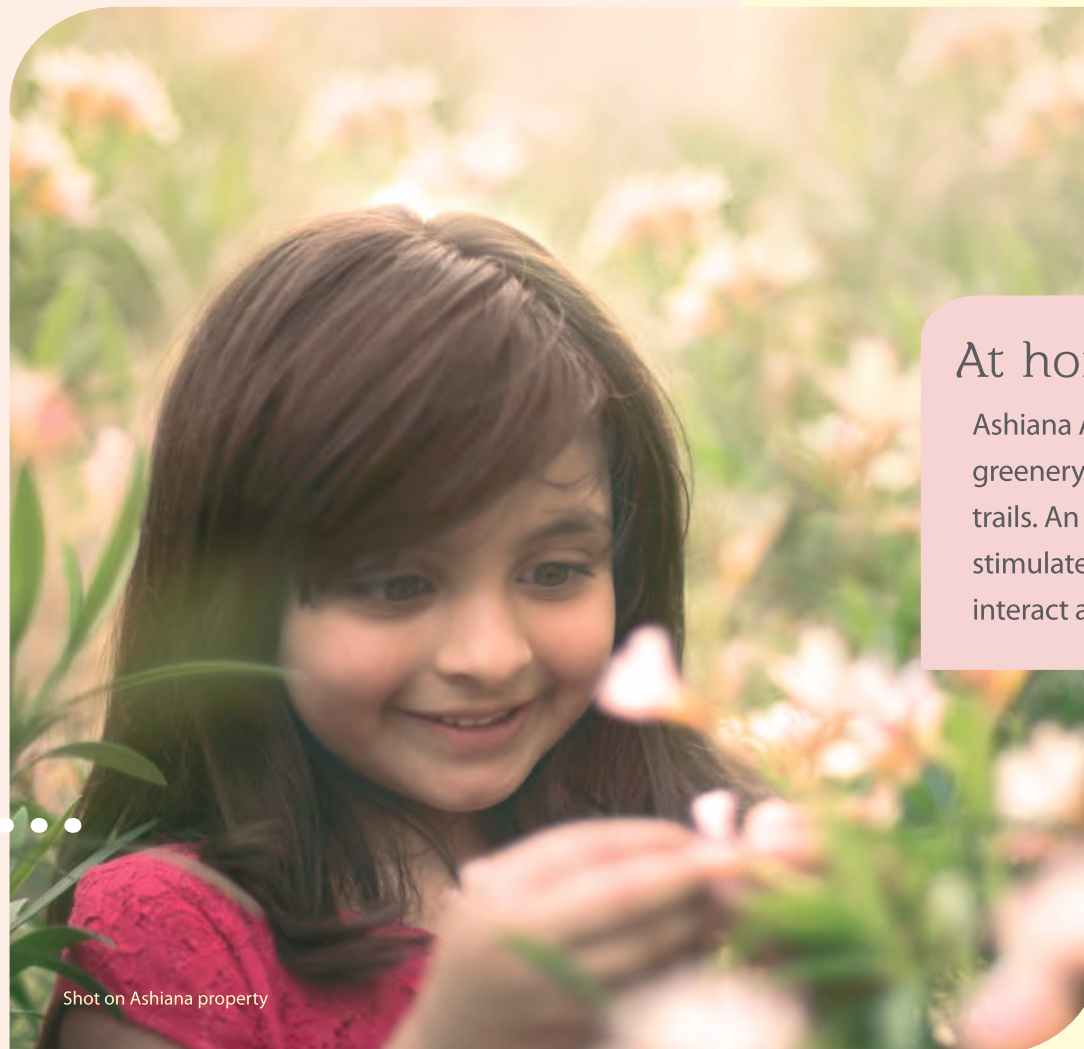
Fun zone for toddlers

The play room at Ashiana Anmol combines fun and learning, with stimulating toys and games that are great fun and aid early development. The play room is carefully designed to offer the virtual building blocks of childhood.



Shot on Ashiana property

+918586866824



Shot on Ashiana property

At home with nature

Ashiana Anmol will have landscaped greenery, water bodies and walking trails. An environment that will stimulate, and inspire your child, to interact and bond with nature.

+918586866824

Live & Learn The activities programme for children

Amenities is just half the story. The other half is activities for children. Ashiana Anmol will have a transformative Live & Learn Programme, led by a Learning Hub manager and supported by specialised coaches for each activity. There will be a pre-planned activity calendar for each month, to keep your children positively engaged. The programme will systematically expose children to a balanced mix of left brain - right brain activities such as music, dance, theatre, art and craft, painting, spoken english, sports, martial arts, and various other age-appropriate activities for well-rounded development. There will be ongoing events, workshops, competitions and special interest clubs at Ashiana Anmol.

+918586866824

Behtar Parvarish
Ka Pata



ashiana
anmol

+918586866824



Artistic representation of the Ashiana Anmol Club House

Your children will discover
new passions, so will you

It's not just your children, Ashiana Anmol will be a place
where you will have your own recreational spaces, to
rejuvenate and relax. Our well-appointed Club House
will have the finest amenities for you and your family.

+918586866824



Shot on Ashiana property

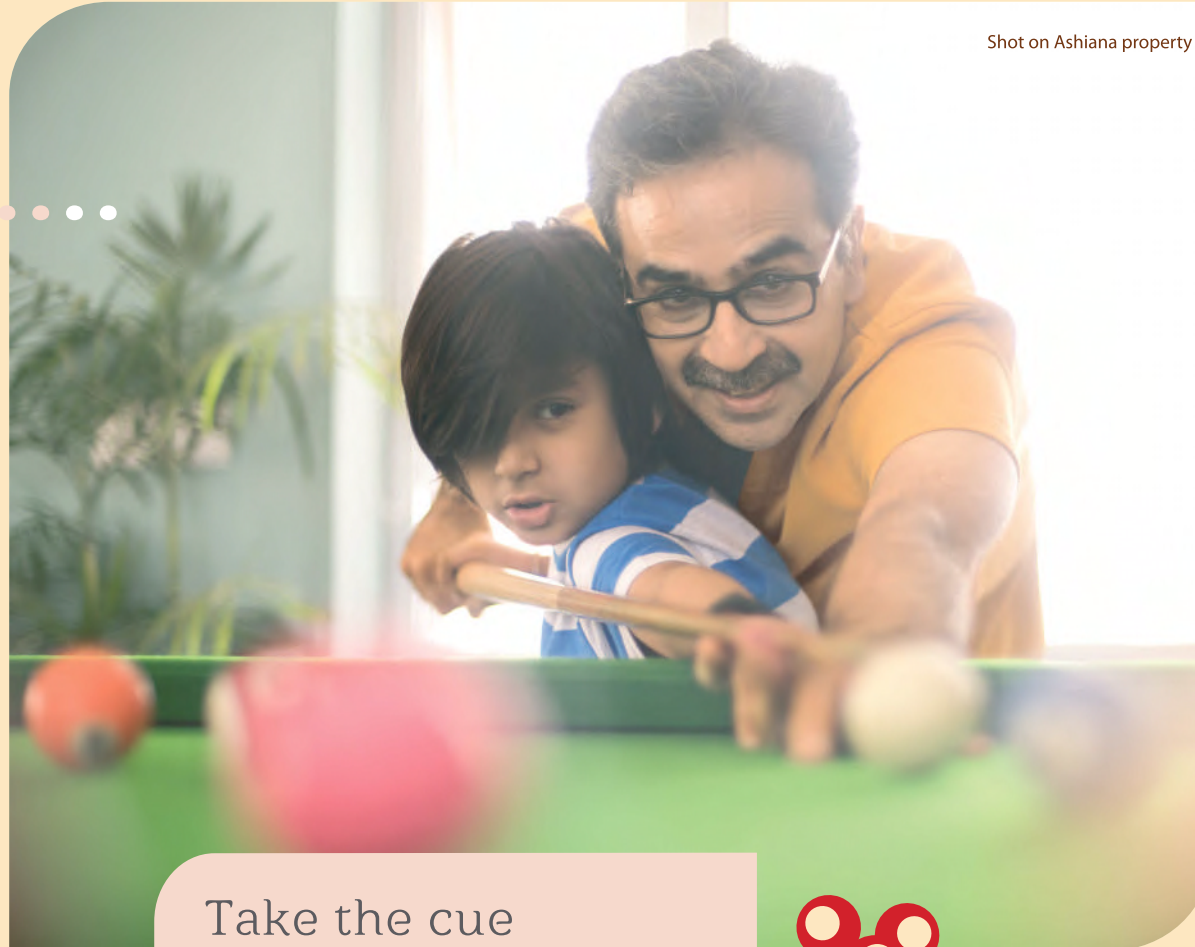
Catch you at the gym

You could out run your fitness goals or simply de-stress with a work out at Ashiana Anmols fully air-conditioned, high-end gym. The gym will have a complete range of exercise equipment and a professional trainer who will point you in the right direction.



+918586866824

Shot on Ashiana property



Take the cue

Imagine unwinding with friends over a game of billiards. Ashiana Anmols Club House will be the perfect place to hang out with friends, and make new friends, everyday.



+918586866824

Walk when you want to shop

The well-stocked convenience store next to Ashiana Anmol turns the bothersome task of grocery shopping into a pleasure. Because all you have to do is slip into your flip-flops and saunter into the store.



+918586866824

Enjoy hassle-free living

When you will move in to Ashiana Anmol, you will just relax and spend time with your family, without worrying about anything else. Because you will have Ashianas Maintenance Services to take care of the rest. A professionally managed organisation with experienced, efficient staff that will work with a sense of responsibility, taking care of all housekeeping duties such as daily cleaning, garbage management, upkeep of common areas, plumbing, electricity management and maintenance of lawns.



All images shot on Ashiana property

+918586866824

Kid centric parents prefer Kid Centric Homes



Image shot on Ashiana property

The children of Ashiana Town are very different from children living elsewhere, because the environment here is very enriching. At any given time, there is so much happening here that we fear missing out on something or the other when we step out to go somewhere.

Tapasvini, Pragnyananda & Prasheetha Panda
Residents, Ashiana Town

+918586866824



Located right in the middle of your
childrens aspirations

Ashiana Anmol not only has everything to fuel your childs aspirations, it is also located very close to everything else that you could be looking for. Schools. Malls. Hospitals. If you have children, this is the place to be.

+918586866824

Location Map



+918586866824

Site Map

+918586866824

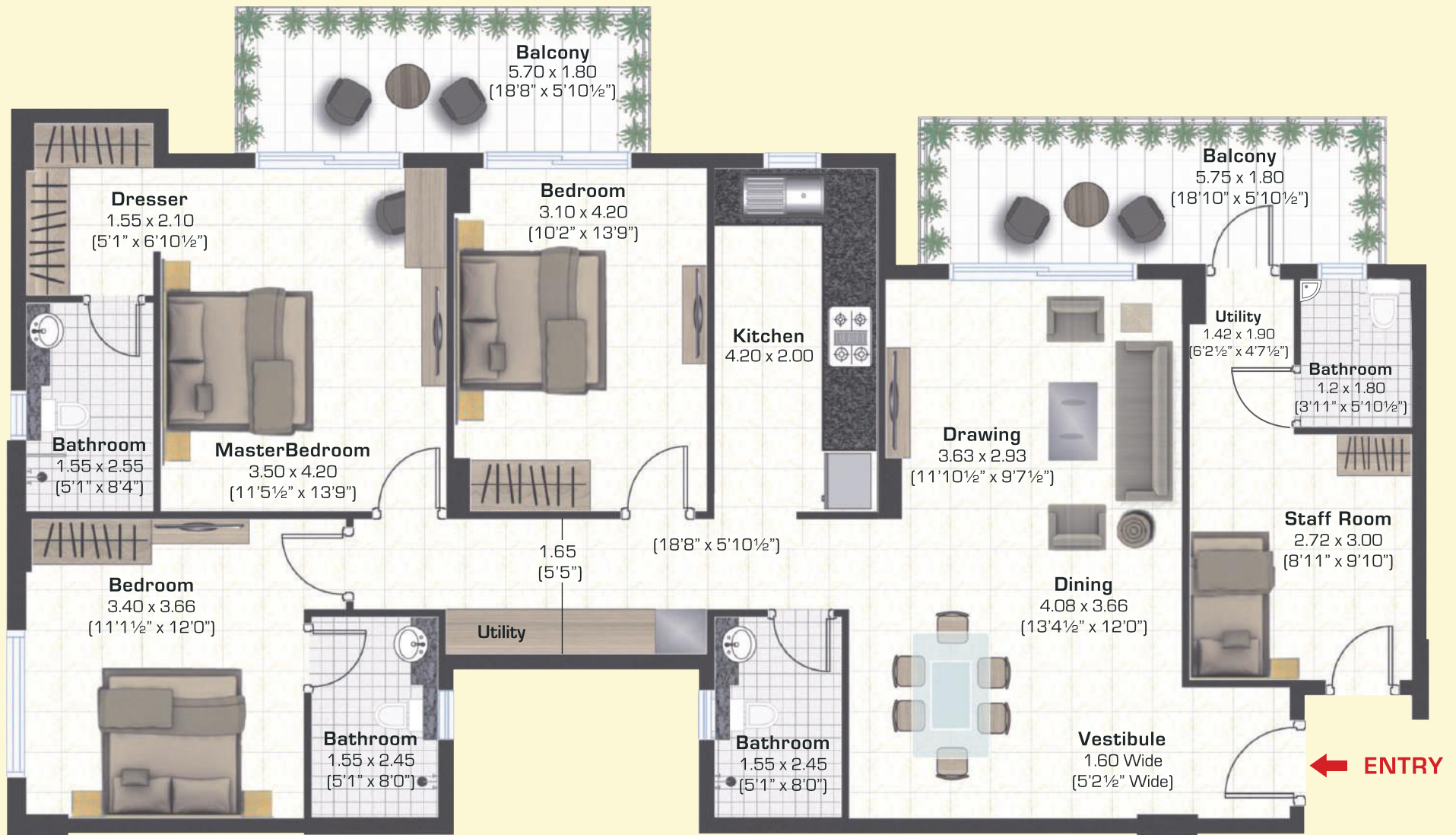


Not to Scale



Magnolia (2 BHK +2 Bathrooms)	Super Area	Carpet Area	Total Balcony Area
	sq m (sq ft)	sq m (sq ft)	sq m (sq ft)
	118.45 (1275)	73.48 (791)	14.77 (159)

+918586866824



Tulip (3 BHK +3 Bathrooms + Staff)	Super Area	Carpet Area	Total Balcony Area
	sq m (sq ft)	sq m (sq ft)	sq m (sq ft)
	182.09 (1960)	117.82 (1268)	19.52 (210)

+918586866824



Lavender (3 BHK +3 Bathrooms)	Super Area	Carpet Area	Total Balcony Area
	sq m (sq ft)	sq m (sq ft)	sq m (sq ft)
	159.79 (1720)	100.90 (1086)	18.08 (195)

+918586866824

Specifications Snapshot



Double charged vitrified tiles, which resist scratches & discoloration



POP in Plumb in each room which gives good wall finish



Modular Kitchen



Power backup up to 6KW in 2BHK & 8KW in 3BHK apartments

SPACE	FLOORING	WALLS	CHAUKHATS	DOOR SHUTTERS	WINDOWS	FIXTURES/ FITTINGS
LIVING/ DINING/ LOBBY	Double Charged Vitrified Tiles	Pop in Plumb, Plastic Emulsion of pleasing shade of a reputed brand as per Architect's suggestions	Folded Steel Section	35mm laminated Flush Door/Skin Doors with night latch, magic eye & handle	UPVC /anodized or powder coated aluminum windows with clear float glass	Modular electrical switches with sockets and fan regulators
BEDROOMS	Double Charged Vitrified Tiles	Pop in Plumb, Plastic Emulsion of pleasing shade of a reputed brand as per Architect's suggestions	Folded Steel Section	35mm laminated Flush Door /Skin Doors with handle	UPVC /anodized or powder coated aluminum windows with clear float glass	Modular electrical switches with sockets and fan regulators
KITCHEN	Double Charged Vitrified Tiles	600mm high ceramic tiles dado above platform POP in Plumb & Plastic Emulsion of pleasing shade of a reputed brand as per Architect's suggestions	N/A	N/A	UPVC /anodized or powder coated aluminum windows with clear float glass	L-shape platform in black granite with kitchen cabinet, chimney and stainless steel sink with drain board
BATHROOM	Ceramic Tiles	Ceramic Tiles up-to height of 2100mm	Folded Steel Section	35mm laminated Flush Door /Skin Doors with handle	UPVC /anodized or powder coated aluminum windows with frosted glass	Round edge glass curtain in master toilet. Toilet fixtures (Wall Mixer and Basin Mixer) of Grohe or equivalent, other fixtures of standard make. Chinaware ie semi recessed counter type wash basin and EVCOF ROCA /American standard or equivalent.
BALCONY	Ceramic Tiles	Acrylic emulsion of pleasing shade of a reputed brand as per architect's suggestions	N/A	N/A	N/A	Mirror, glass shelf in master toilet, towel rod & health faucet of standard make
						N/A

ELECTRICAL WORK

All electrical wiring in concealed conduits with copper wires. Convenient provision and distribution of light & power plugs; provision for electrical chimney above platform, gas pipeline and water purifier point in kitchen.

STRUCTURE

Reinforced cement concrete frame structure or load bearing masonry structure in accordance with applicable earthquake zone and BIS codes.

TELEPHONE/T.V.

Points will be provided in drawing/dining room and in all bedrooms. Intercom will be provided through the authorized phone company or EPABX.

LIFT

PIPED LPG

GENERATOR

AIR-CONDITIONING

OTHER FACILITIES

Two gearless high speed automatic lifts in each block with generator backup.

Provision in the kitchen will be provided.

Power backup upto 6KW in 2BHK & 8KW in 3BHK apartments.

Provision for split A/C in all bedrooms and living room (no air conditioners are being provided).

Provision for a washing machine point will be provided at suitable location & provision for DTH Television broadcast. DTH antenna installation is allowed only on terrace and not with each unit.

+918586866824

Thank You

+918586866824