

# Soaring Elegance.

The extraordinary circular construction of the five towers of ATS Tourmaline, allows for an elegant cocooned setting for residents. With the luxurious resort-style swimming pool designed as the sparkling center-point for all apartment towers and world-class amenities spread around its periphery, living at ATS Tourmaline is an impeccable experience of comfort and exclusivity.



**+918586866824**



**+918586866824**

# Type A



**4+1 BHK**

Sale Area: 3150 sq. ft.

Unit Built up (Unit + Balcony) Area: 2584 sq. ft.

Common Circulation + Services: 566 sq. ft.



- NOTE:
1. THE WINDOW SIZE/ ITS LOCATION IN ROOMS MAY CHANGE BECAUSE OF ELEVATIONAL FEATURES.
  2. THE OVERALL LAYOUT MAY VARY BECAUSE OF STATUTORY REASONS IN CASE REQUIRED.
  3. THE SUPER AREA MAY VARY BY ± 10%.
  4. CURRENTLY NO COLUMNS ARE SHOWN IN THE PLAN WHICH WILL BE INCORPORATED AS/ STRUCTURE.

Note: Saleable area/layout is tentative and is subject to change due to modifications asked for by approving authorities from time to time till occupancy certificate is obtained. Architects reserves the right to add/delete any detail/specification/elevation mentioned if so warranted by circumstances.

# TOURMALINE HOME PLANS

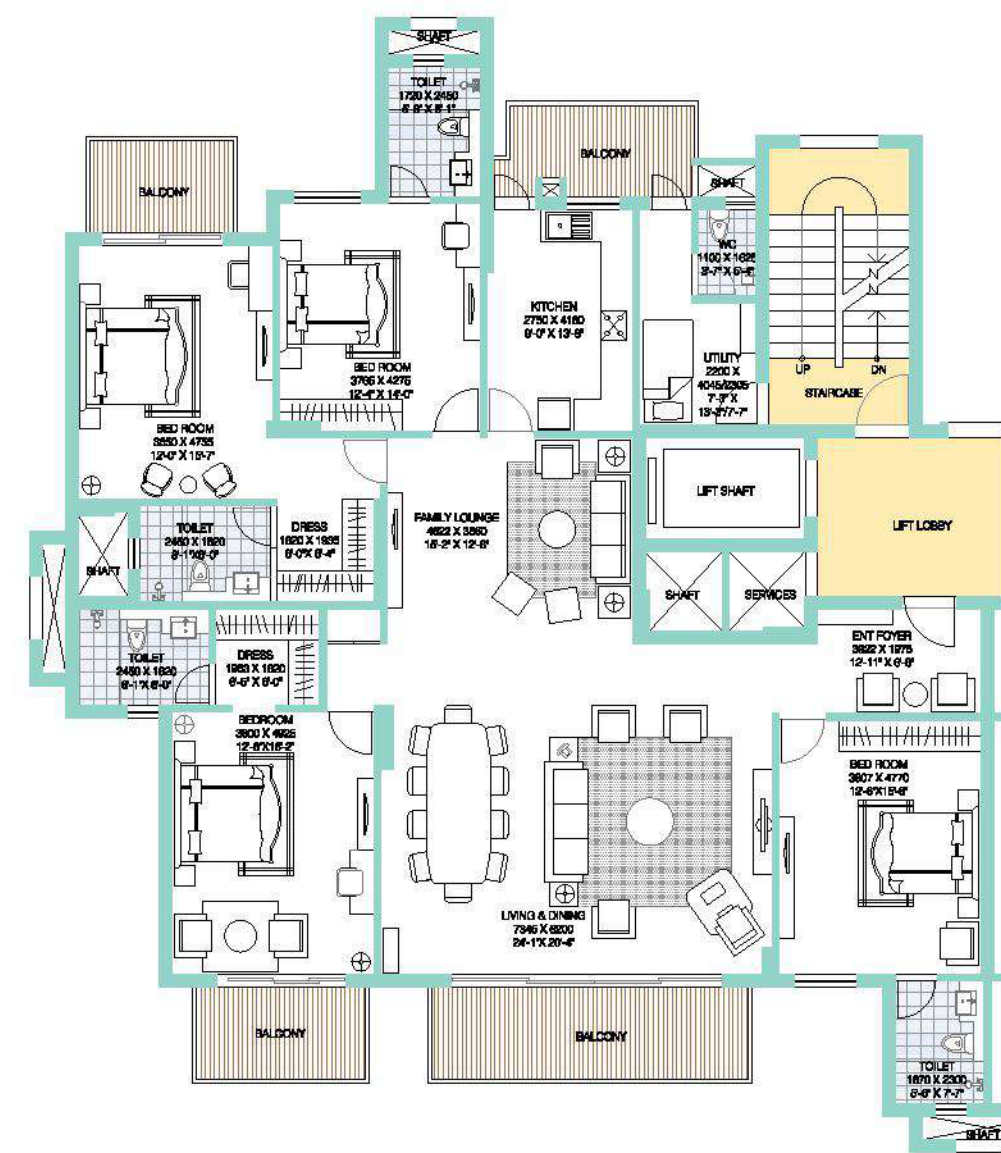


Sale Area: 3150 sq. ft. | Unit Built-up Area: 2584 sq. ft.

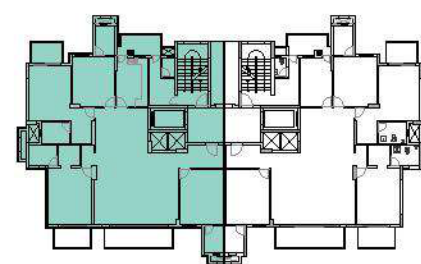
Common Circulation + Services: 566 sq. ft.

**+918586866824**

FLOOR PLAN



KEY PLAN



## 4+1 BHK

# Type B



## 3+1 BHK

(with Family Lounge)

Sale Area: 2585 sq. ft.

Unit Built up (Unit + Balcony) Area: 2100 sq. ft.

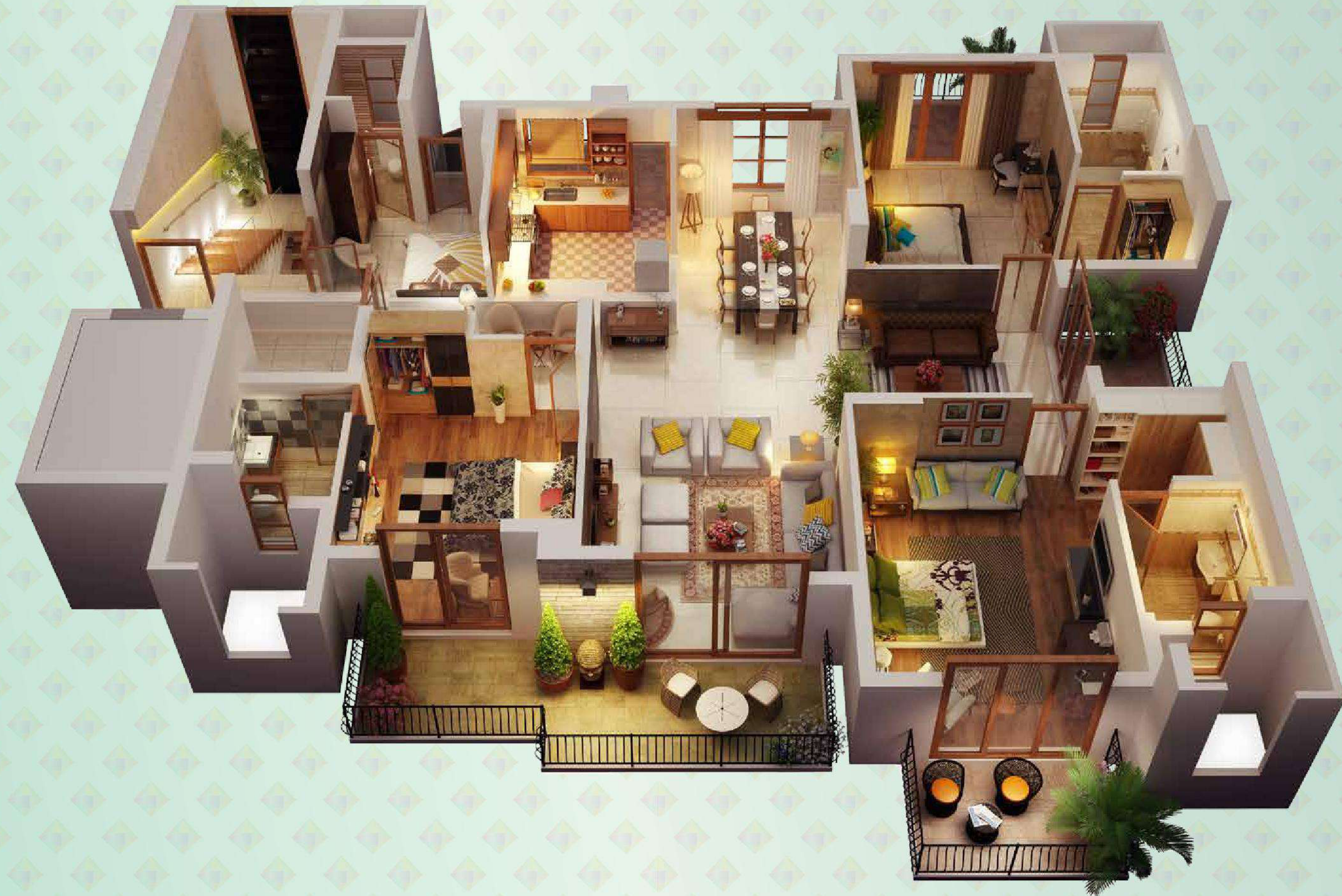
Common Circulation + Services: 485 sq. ft.



NOTE:  
 1. THE WINDOW SIZE/ ITS LOCATION IN ROOMS MAY CHANGE BECAUSE OF ELEVATIONAL FEATURES.  
 2. THE OVERALL LAYOUT MAY VARY BECAUSE OF STATUTORY REASONS IN CASE REQUIRED.  
 3. THE SUPER AREA MAY VARY BY ± 10%.  
 4. CURRENTLY NO COLUMNS ARE SHOWN IN THE PLAN WHICH WILL BE INCORPORATED AS/ STRUCTURE.

Note: Saleable area/layout is tentative and is subject to change due to modifications asked for by approving authorities from time to time till occupancy certificate is obtained. Architects reserves the right to add/delete any detail/specification/elevation mentioned if so warranted by circumstances.

# TOURMALINE HOME PLANS

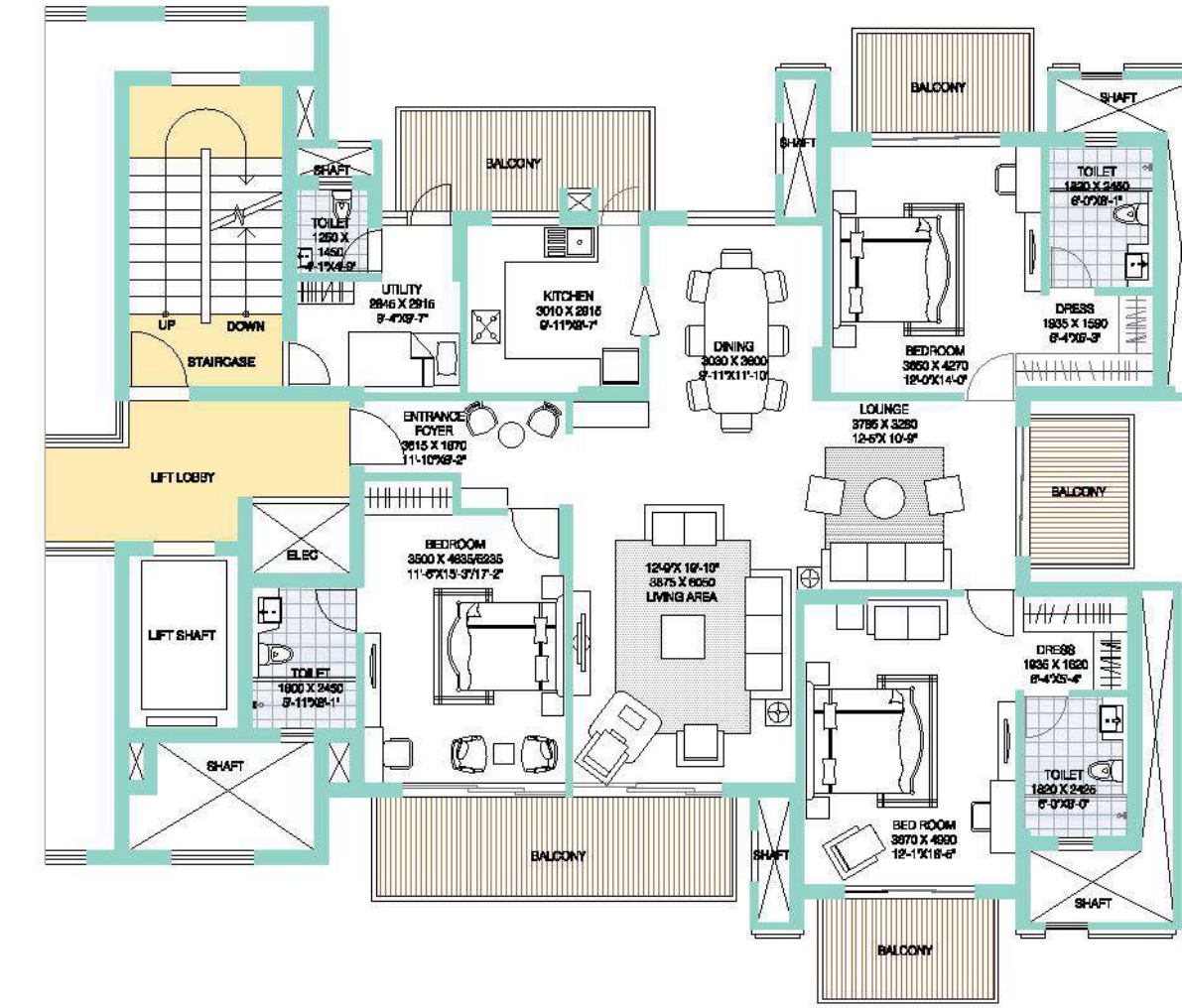


Sale Area: 2585 sq. ft. | Unit Built-up Area: 2100 sq. ft.

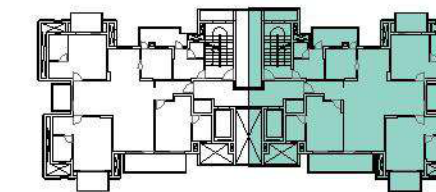
Common Circulation + Services: 485 sq. ft.

**+918586866824**

FLOOR PLAN



KEY PLAN



**3+1 BHK**  
(with Family Lounge)

*Type C*



**3+1 BHK**

Sale Area: 2150 sq. ft.

Unit Built up (Unit + Balcony) Area: 1797 sq. ft.

Common Circulation + Services: 353 sq. ft.



NOTE:  
1. THE WINDOW SIZE/ ITS LOCATION IN ROOMS MAY CHANGE BECAUSE OF ELEVATIONAL FEATURES.  
2. THE OVERALL LAYOUT MAY VARY BECAUSE OF STATUTORY REASONS IN CASE REQUIRED.  
3. THE SUPER AREA MAY VARY BY ± 10%.  
4. CURRENTLY NO COLUMNS ARE SHOWN IN THE PLAN WHICH WILL BE INCORPORATED AS/ STRUCTURE.

Note: Saleable area/layout is tentative and is subject to change due to modifications asked for by approving authorities from time to time till occupancy certificate is obtained. Architects reserves the right to add/delete any detail/specification/elevation mentioned if so warranted by circumstances.

# TOURMALINE HOME PLANS

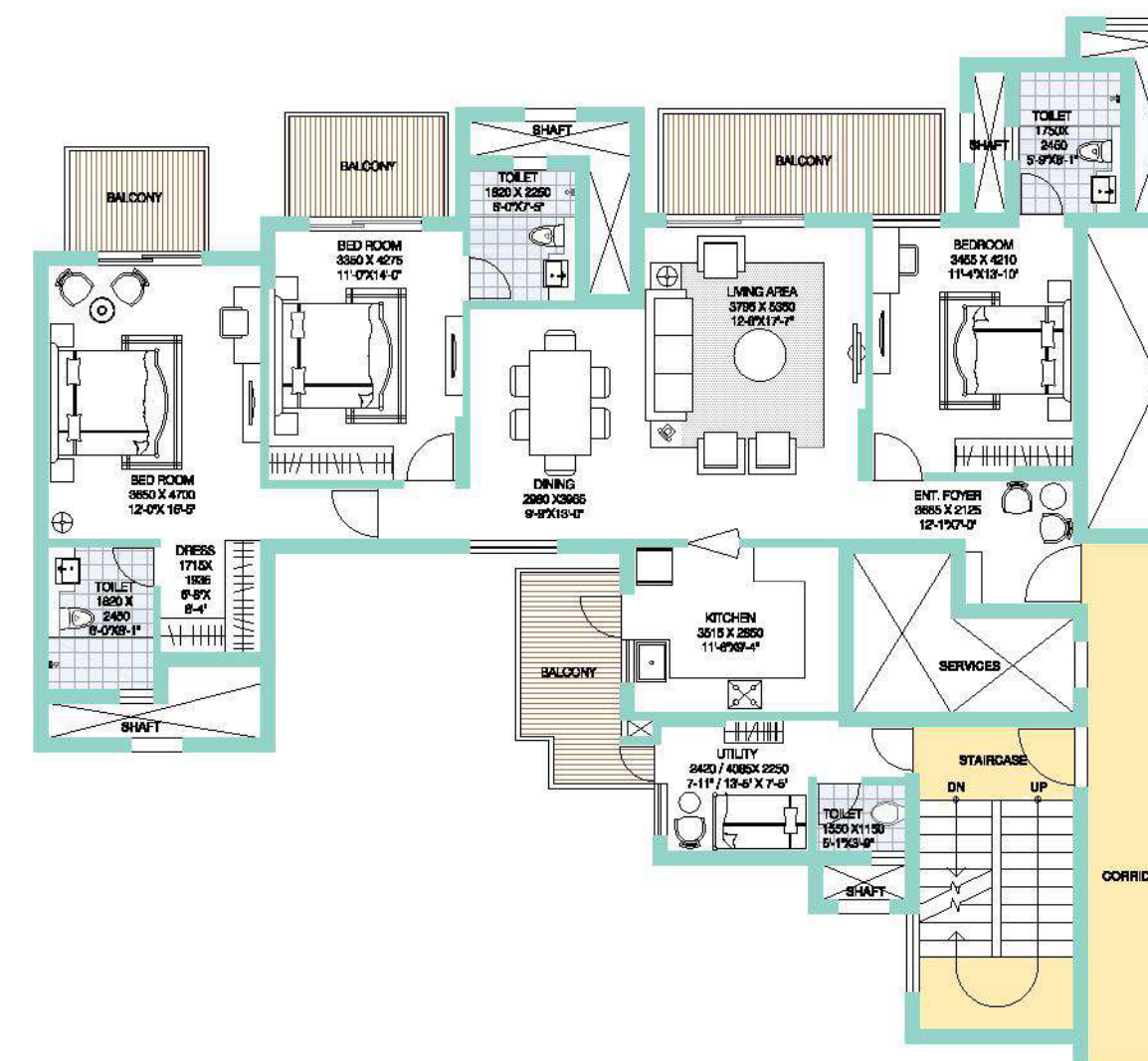


Sale Area: 2150 sq. ft. | Unit Built-up Area: 1797 sq. ft.

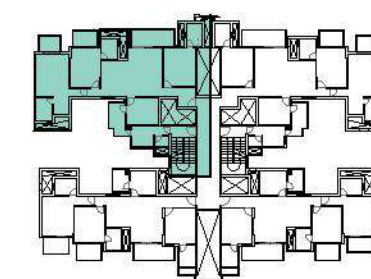
Common Circulation + Services: 353 sq. ft.

**+918586866824**

FLOOR PLAN



KEY PLAN



## 3+1 BHK

# Type D



## 3 BHK

Sale Area: 1750 sq. ft.

Unit Built up (Unit + Balcony) Area: 1466 sq. ft.

Common Circulation + Services: 284 sq. ft.



NOTE:  
 1. THE WINDOW SIZE/ ITS LOCATION IN ROOMS MAY CHANGE BECAUSE OF ELEVATIONAL FEATURES.  
 2. THE OVERALL LAYOUT MAY VARY BECAUSE OF STATUTORY REASONS IN CASE REQUIRED.  
 3. THE SUPER AREA MAY VARY BY ± 10%.  
 4. CURRENTLY NO COLUMNS ARE SHOWN IN THE PLAN WHICH WILL BE INCORPORATED AS/ STRUCTURE.

Note: Saleable area/layout is tentative and is subject to change due to modifications asked for by approving authorities from time to time till occupancy certificate is obtained. Architects reserves the right to add/delete any detail/specification/elevation mentioned if so warranted by circumstances.

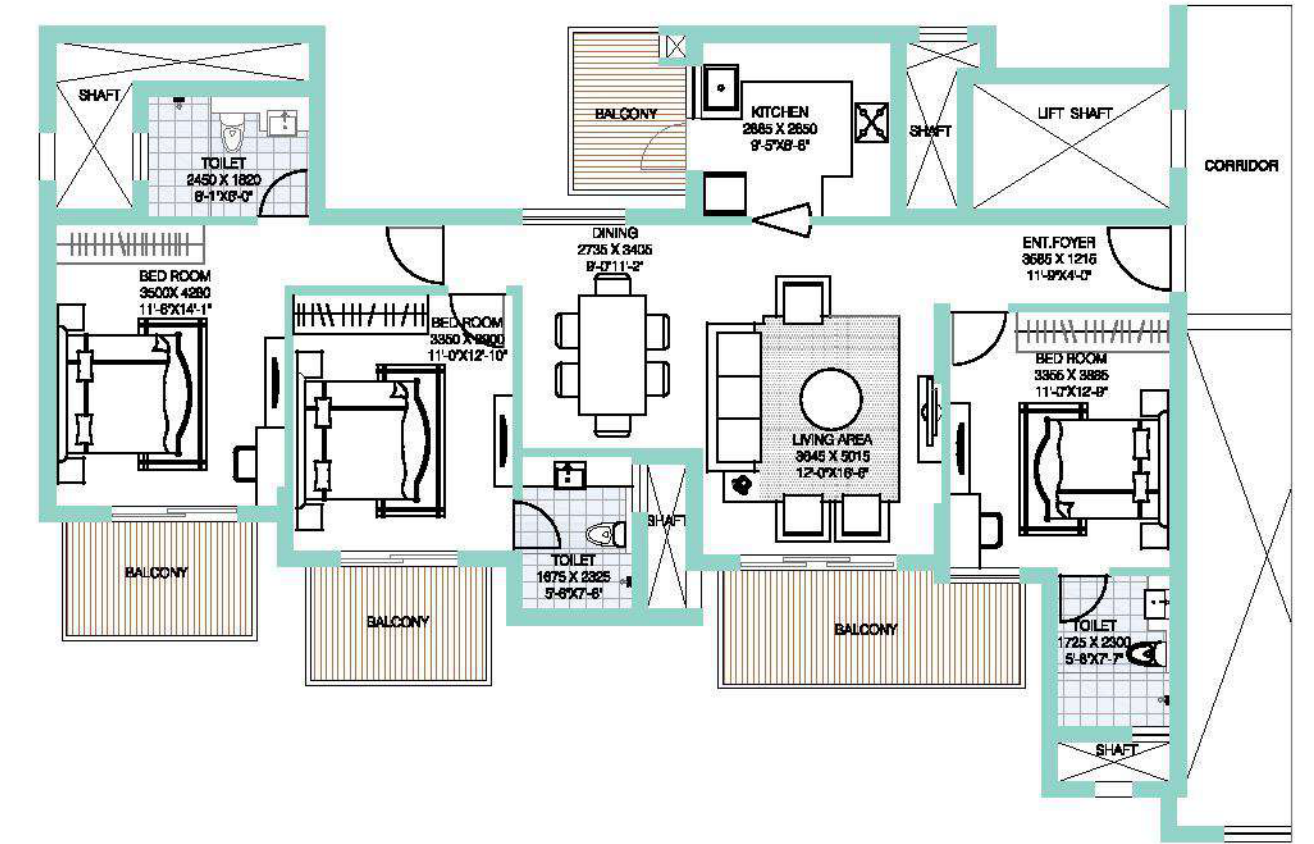
# TOURMALINE HOME PLANS



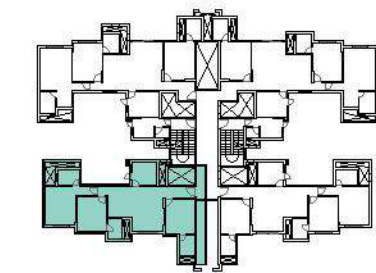
Sale Area: 1750 sq. ft. | Unit Built-up Area: 1466 sq. ft.

Common Circulation + Services: 284 sq. ft.

FLOOR PLAN



KEY PLAN



## 3 BHK

**+918586866824**