



 **BESTECH**

**PARK VIEW**  
*ananda*

**+918586866824**



**BESTECH**  
**PARK VIEW**  
**Ananda**

Who imagined man would fly ?

Or that paperless messages would travel across oceans in seconds?

Those who imagined surged ahead just because they saw the future.

You too have the rare opportunity to use your foresight when you chose your home for the future. You too can share in the excitement of creation.

Park View Ananda, an exquisite group housing project coming up in Sec-81 Gurgaon, blends aesthetics with exquisite lifestyle! The ultra-luxurious apartments are equipped with **imported marble flooring** in the living room and elegant **wooden flooring** in all bedrooms. While all the rooms are fitted with **air-conditioners** for ultimate comfort, the joy of cooking will be heightened at the **modular kitchen**. Quite simply, there's nothing left to desire!

Do join us to see what life could be ...

**+918586866824**

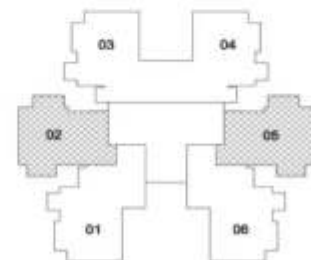
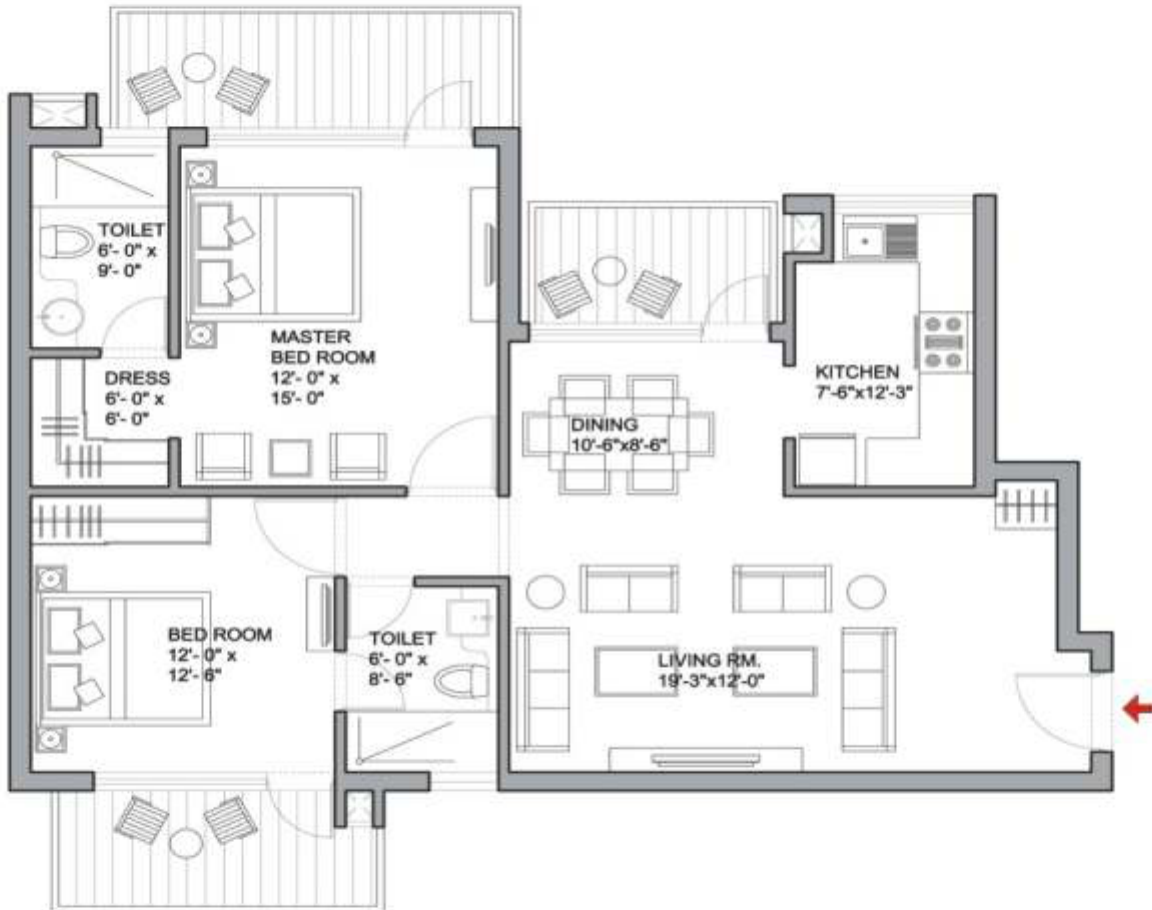
**BESTECH**  
**PARK VIEW**  
*ananda*



1. CLUB / MULTIPURPOSE HALL - CAFE
2. POOL
3. KIDS POOL
4. BASKETBALL COURT
5. TENNIS COURT
6. BADMINTON COURT
7. CRICKET NET
8. SQUASH COURT
9. SKATING RINK
10. AMPHITHEATRE
11. KIDS PLAY AREA & SAND PITS
12. 3 TIER SECURITY
13. RAINWATER HARVESTING
14. CONVENIENT SHOPPING
15. JOGGING & WALKING TRACK
16. YOGA HUTS
17. BASEMENT PARKING
18. SURFACE PARKING
19. VISITOR PARKING
20. PETS GARDEN
21. CENTRAL GREENS
22. VILLAS

**+918586866824**

TYPE - 2BHK  
 SUPER AREA-1360 SQ.FT.

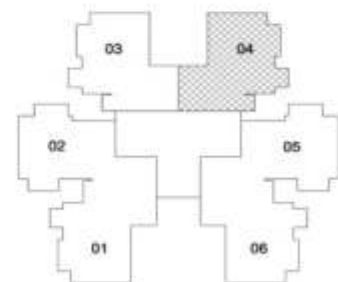


TOWERS A, B, C, D, E, F, G & I

**+918586866824**

1sq.mt. = 10.764sq.ft.

TYPE - 3BHK  
 SUPER AREA-1645 SQ.FT.

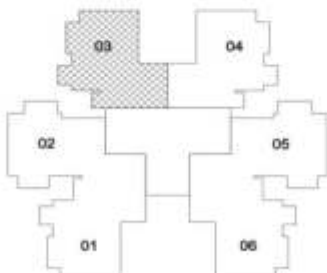


TOWERS E, F & G

**+918586866824**

1sq.mt. = 10.764sq.ft.

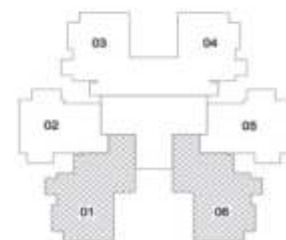
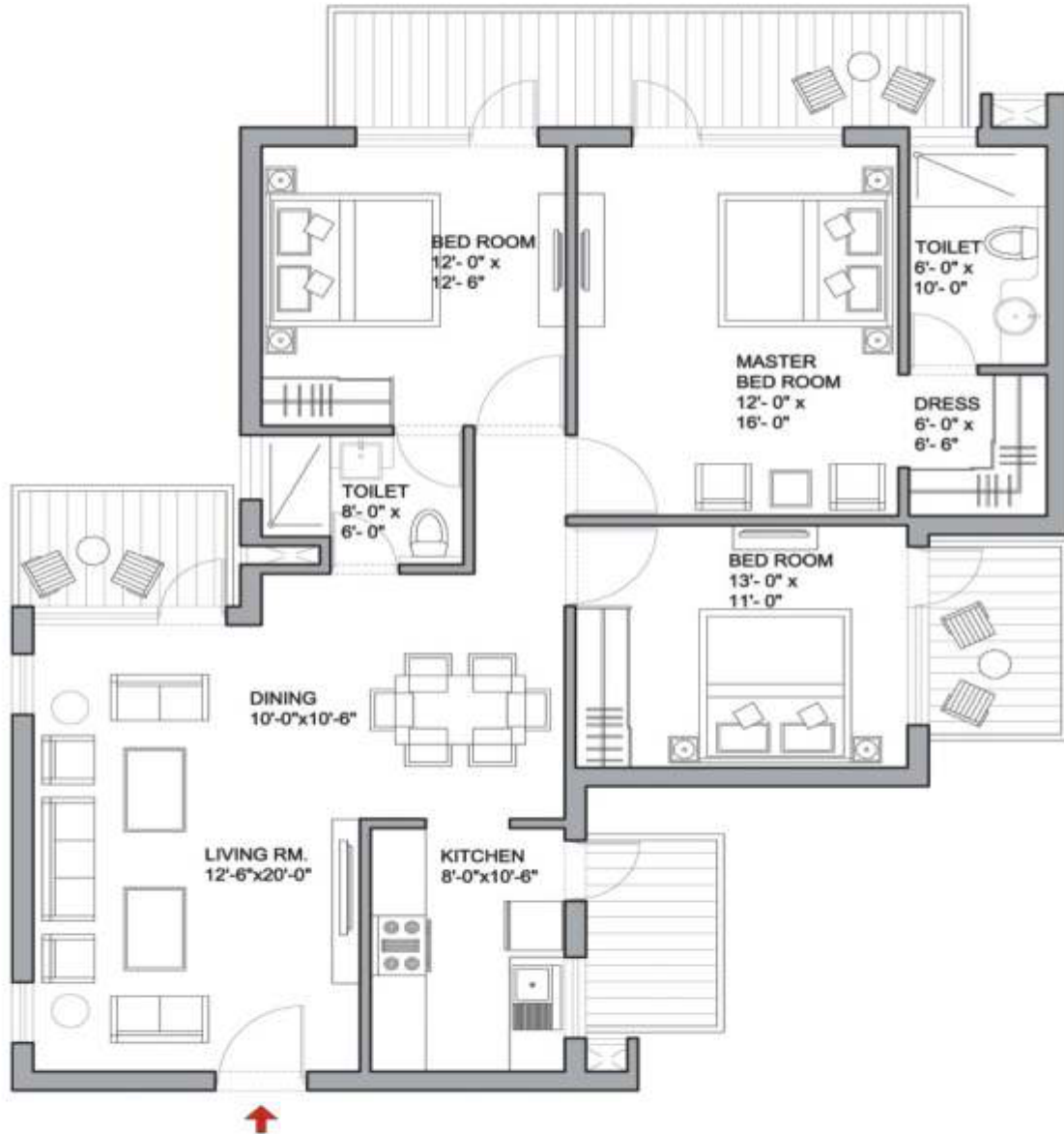
TYPE - 3BHK  
 SUPER AREA-1660 SQ.FT.



TOWERS E, F & G

**+918586866824**

TYPE - 3BHK  
 SUPER AREA-1660 SQ.FT.

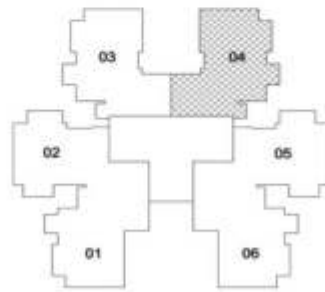


TOWERS B, C, D, E, F, G, & I

**+918586866824**

1sq.mt. = 10.764sq.ft.

TYPE - 3BHK  
 SUPER AREA-1790 SQ.FT.



**+918586866824**

TOWERS A, B, C, D & I

1sq.mt. = 10.764sq.ft.



TYPE - 3BHK  
 SUPER AREA-1810 SQ.FT.



TOWERS A, B, C, D & I  
 01 & 06 only in Tower A

**+918586866824**

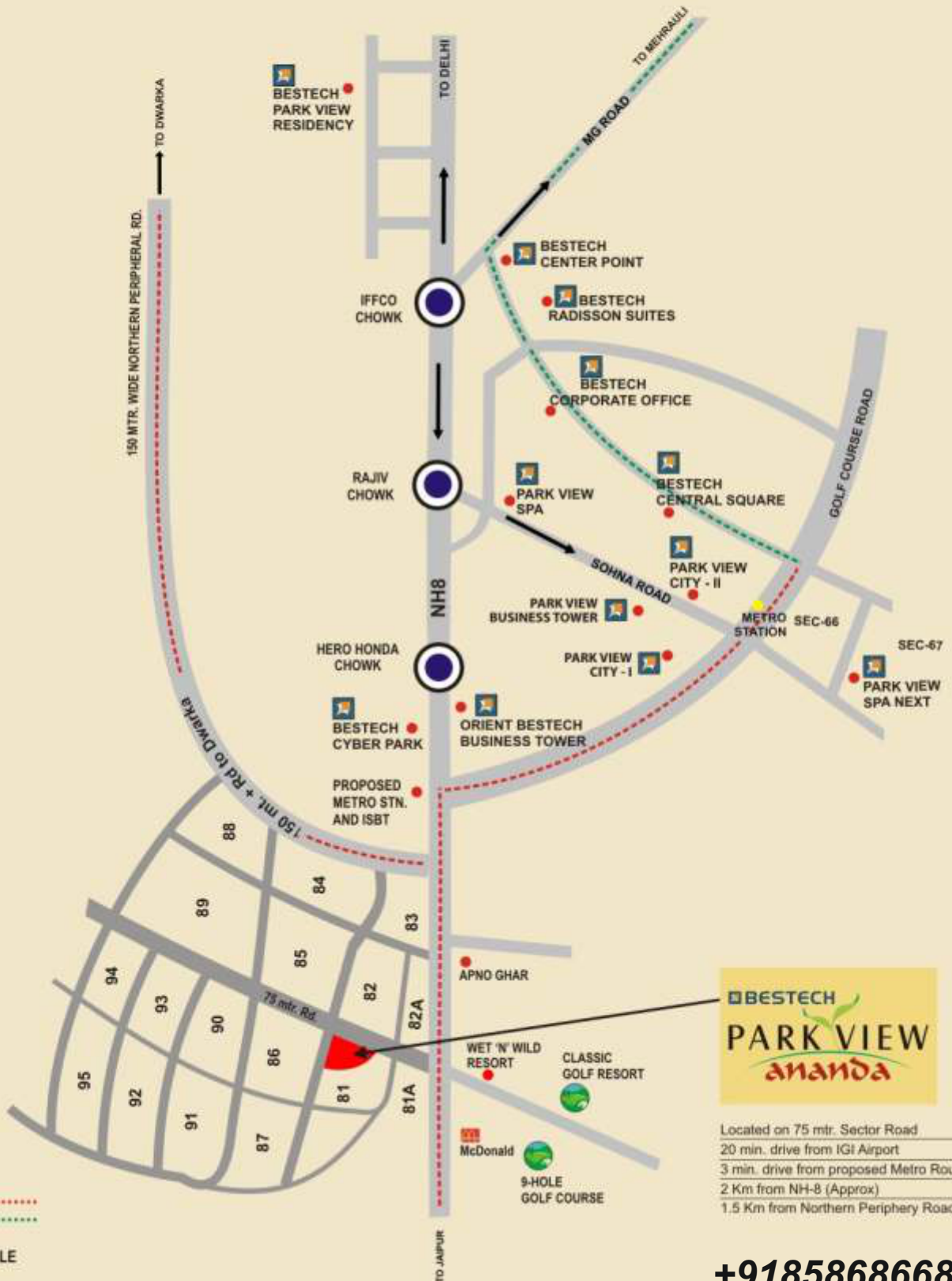


## SPECIFICATIONS

LOCATION	WALLS	FLOORS	DOORS	WINDOWS/ GLAZING	OTHERS
<b>LIVING ROOM</b>	Acrylic Emulsion Paint	Imported Marble Flooring	Hardwood door frame with European style flush panel	Anodized/ Powder Coated Aluminum	<b>Air Conditioner in Living Room</b>
<b>BED ROOM</b>	Oil Bound Distemper	Wooden Flooring in all Bed Rooms	Hardwood door frame with European style flush panel	Anodized / Powder Coated Aluminum	<b>All Bed Rooms with Air Conditioner</b>
<b>KITCHEN</b>	2' high Ceramic Tiles above counter rest painted	Ceramic Tiles	Hardwood door frame with European style flush panel	Anodized / Powder Coated Aluminum	Granite counters with Stainless steel sink with <b>Modular kitchen</b>
<b>TOILETS</b>	Ceramic Tiles & Oil Bound Distemper	Ceramic Tiles	Hardwood door frame with European style flush panel	Anodized / Powder Coated Aluminum	Granite/Marble counters, Single lever CP fittings-Grohe/ Kohler or Equivalent, Wall hung WC, Provision for hot & cold water supply system.
<b>SERVANT / UTILITY ROOM</b>	Oil Bound Distemper	Ceramic Tiles	Hardwood door frame with flush panel	Anodized/ Powder Coated Aluminum	
<b>BALCONIES</b>		Anti Skid Ceramic Tiles			
<b>LIFT LOBBIES</b>		Granite / Imp. or Indian marble			
<b>EXTERNAL FACADE</b>	Permanent Texture / Paint Finishes				

Note: All layout plans, floor and specifications are tentative and are subject to variation and modification as decided by company/relevant authorities and cannot form part of any offer or contract. Marble / Granite being natural materials have inherent characteristics of color and grain variation.

**BESTECH**  
**PARK VIEW**  
*ananda*



Located on 75 mtr. Sector Road  
 20 min. drive from IGI Airport  
 3 min. drive from proposed Metro Route  
 2 Km from NH-8 (Approx)  
 1.5 Km from Northern Periphery Road (Approx)

Metro Network  
 Proposed .....  
 Running .....

MAP NOT TO SCALE

**+918586866824**