

# PARK SERENE

2/3/4 BEDROOM APARTMENTS  
SECTOR 37 D • GURGAON

+918586866824



Delivering Promises



+918586866824

Artistic Impression

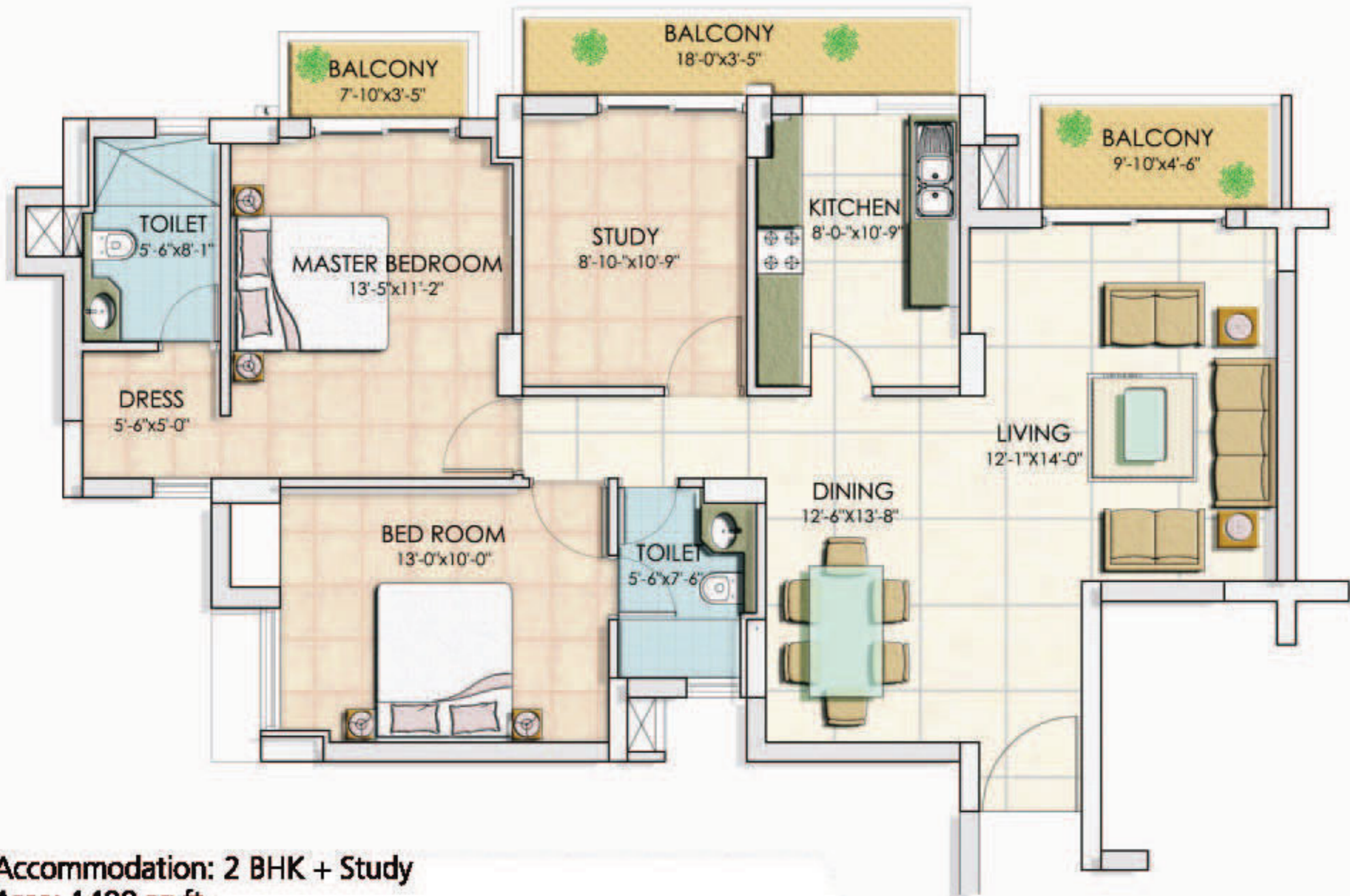


+918586866824

NOT TO SCALE

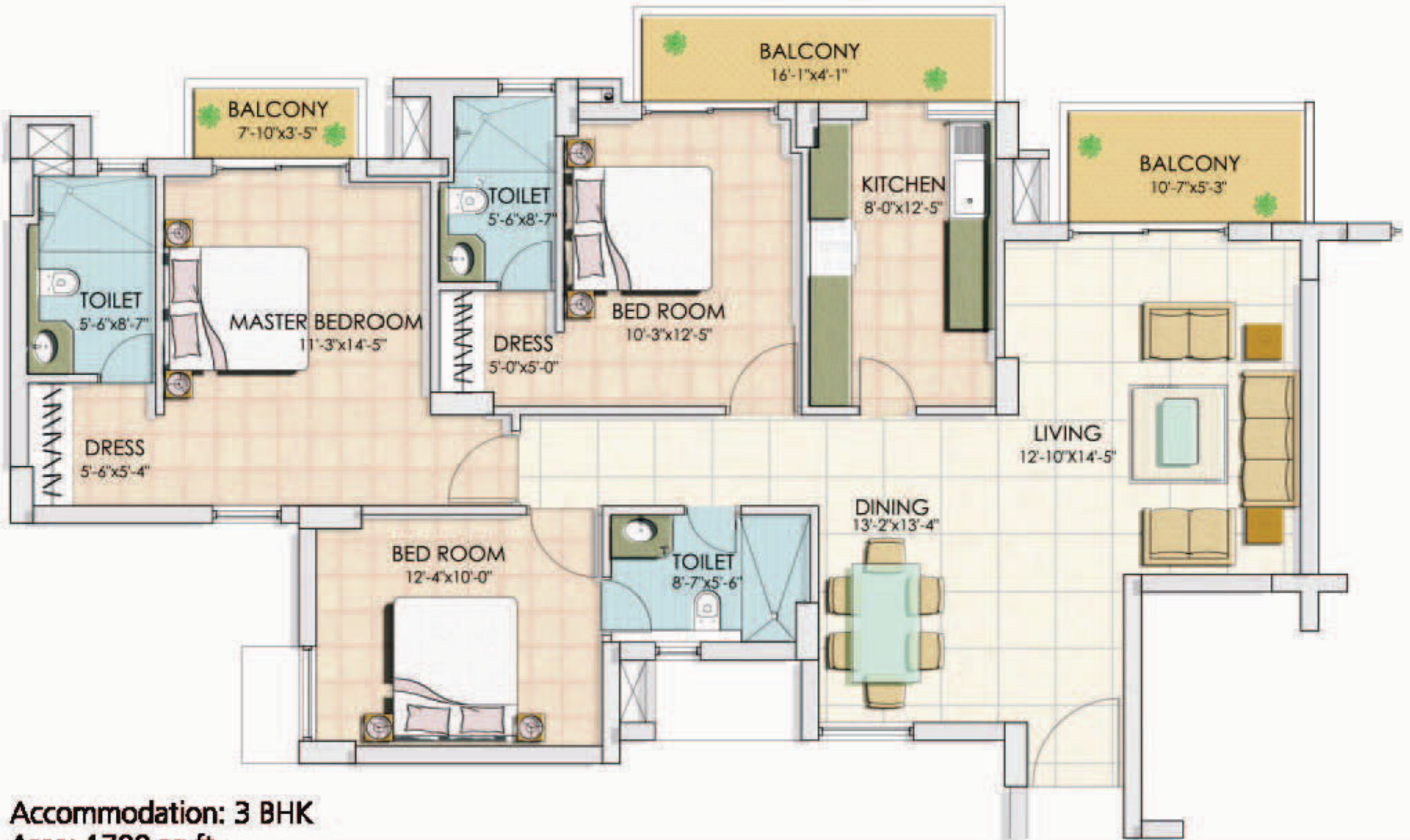


+918586866824



**Accommodation: 2 BHK + Study**  
**Area: 1488 sq.ft.**

+918586866824



**Accommodation: 3 BHK**  
**Area: 1788 sq.ft.**



**Accommodation: 3 BHK + Study + Servant**  
**Area: 2250 sq.ft.**



Accommodation: 4 BHK + Servant  
 Area: 2450 sq.ft.



## Standard Specification

<b>Wall Finish: Internal</b>  Living/Dining/Bed Rooms      Painted in pleasing shades of Oil Bound Distemper Servant's Room                      Painted in Oil Bound Distemper Lift Lobbies                              Selected Marble/Granite Cladding External Façade of Towers      Textured Paint Finish		<b>Toilets</b>  Dado    Selected Ceramic Tiles Floorings                                  Ceramic Tiles Fittings                                      Granite/Marble Counter, white sanitary fixtures, contemporary CP Fittings  styled	
<b>Flooring</b>  Living/Dining                              Vitrified Tiles Bed Rooms                                  Ceramic Tiles Servant's Room                              Ceramic Tiles Balcony                                      Anti Skid Ceramic Tiles Terrace                                      Anti Skid Ceramic Tiles Lift Lobby                                      Selected Granite/Marble		<b>Doors &amp; Windows</b>  Windows                                      Powder Coated / Anodized Aluminum Glazing Doors    Seasoned hardwood frames with painted board shutters.	
<b>Kitchen</b>  Flooring                                      Ceramic Tiles Dado    Ceramic Tiles above working platform, rest Oil Bound Distemper Platform                                      Granite Counter with single bowl stainless steel sink with drain board		<b>Facilities</b>  Electrical: Conduit Copper electrical wiring for all light and power points  *Architects and The Developer reserve the right to alter the specifications and facilities for design improvement.	

+918586866824