

NEWSLETTER



THE CAMELLIAS NEWSLETTER
JULY 2021

 +91 8586866824



THE
CAMELLIAS

CONTENTS

- 05 FOREWORD
- 07 THOUGHTFULLY DESIGNED
- 13 DISTINCTIVE MATERIALS
- 22 OUR LIGHTING PHILOSOPHY
- 25 ARTFUL DÉCOR
- 31 CUSTOMIZED EXPERIENCES
- 38 INSTAGRAM

THE CAMELLIAS - FEATS

6,99,000 CU. M.
of earth excavated

38,240 MT
of reinforcement steel used in the making of The Camellias

2,92,750 CU. M.
of reinforced concrete poured in the making of The Camellias

61.63 MILLION
man-hours consumed in the making of The Camellias

1246 NUMBERS
of trees planted in The Camellias
(includes seven species of flowering trees
and four species of fruit trees)

16,000 SQ. M.
of grass and 22,000 sq. m. of shrubs and other
ground covers adorn the landscape at The Camellias

MORE THAN 1000
large planters for specimen and flowering
plants complementing the horticulture theme

2,700 SQ. M.
of roof petals with a flowering ground
cover consisting of Verbena and Lantana

MORE THAN 900 CCTV
cameras secure the condominium

THE CAMELLIAS CLUB

87,300 CU. M.
of earth excavated

1,910 MT.
of reinforcement steel used in the making of The Camellias Club

16,490 CU. M.
of reinforced concrete poured in the making of The Camellias Club

1.69 MILLION
man-hours consumed in the making of The Camellias Club

115 CCTV
cameras cover The Camellias Club

Dear Patron,

We hope that you are keeping well and staying safe.

It has been a joy to see so many of you enjoying The Camellias and its clubhouse; we hope that you have been able to explore and experience the many facilities available.

With The Camellias Club in full bloom, we wanted to share with you a few of the unique and special design details that went into making this unparalleled residence a marvel of architecture, design and craftsmanship. Over 600 individual materials have been used in the making of The Camellias. From the Turkish Bianco Cavalli marble used in the indoor swimming pool to the Indonesian Sukabumi stone in the outdoor pool and Spanish metal tiles in the washrooms, we scoured the globe for unique materials and high quality products. Careful thought and deliberation has gone into each design decision.

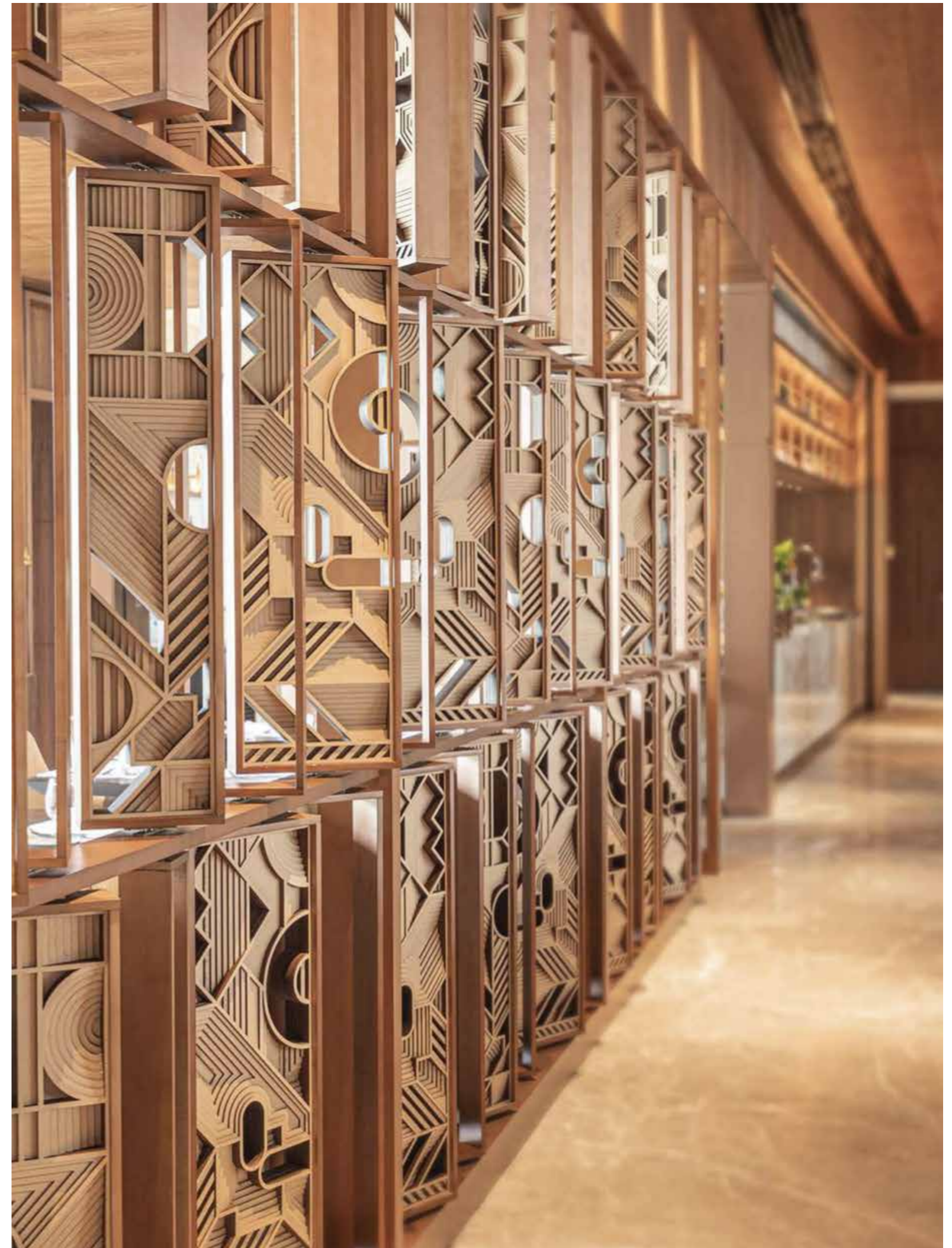
July also marks the completion of our first series of masterclasses and curated talks with our in-house talent as well as guest experts from various fields. We have had resounding feedback to the series and have begun the second set of curated talks, demonstrations and moderated conversations, featuring renowned voices and faces from across the nation.

Life at The Camellias means not only living within an artistic masterpiece, but also with access to world-class private amenities and five-star level services all at your doorstep. Today, **sixteen families have moved in**, and are already enjoying the many luxuries on offer.

I hope you will explore this newsletter to get a glimpse of the many opportunities and features of your new home.



AAKASH OHRI
Senior Executive Director
Business Development





THOUGHTFULLY
DESIGNED

THE CAMELLIAS CLUB ROOF

When viewed from above, the seven roofs of the clubhouse resemble a camellia flower. Each rooftop has been adorned with a variety of plants and shrubbery, adding to the surrounding greenery of the complex. In addition, each roof includes a petal-shaped skylight, which allows for natural light to flow into the zones below.

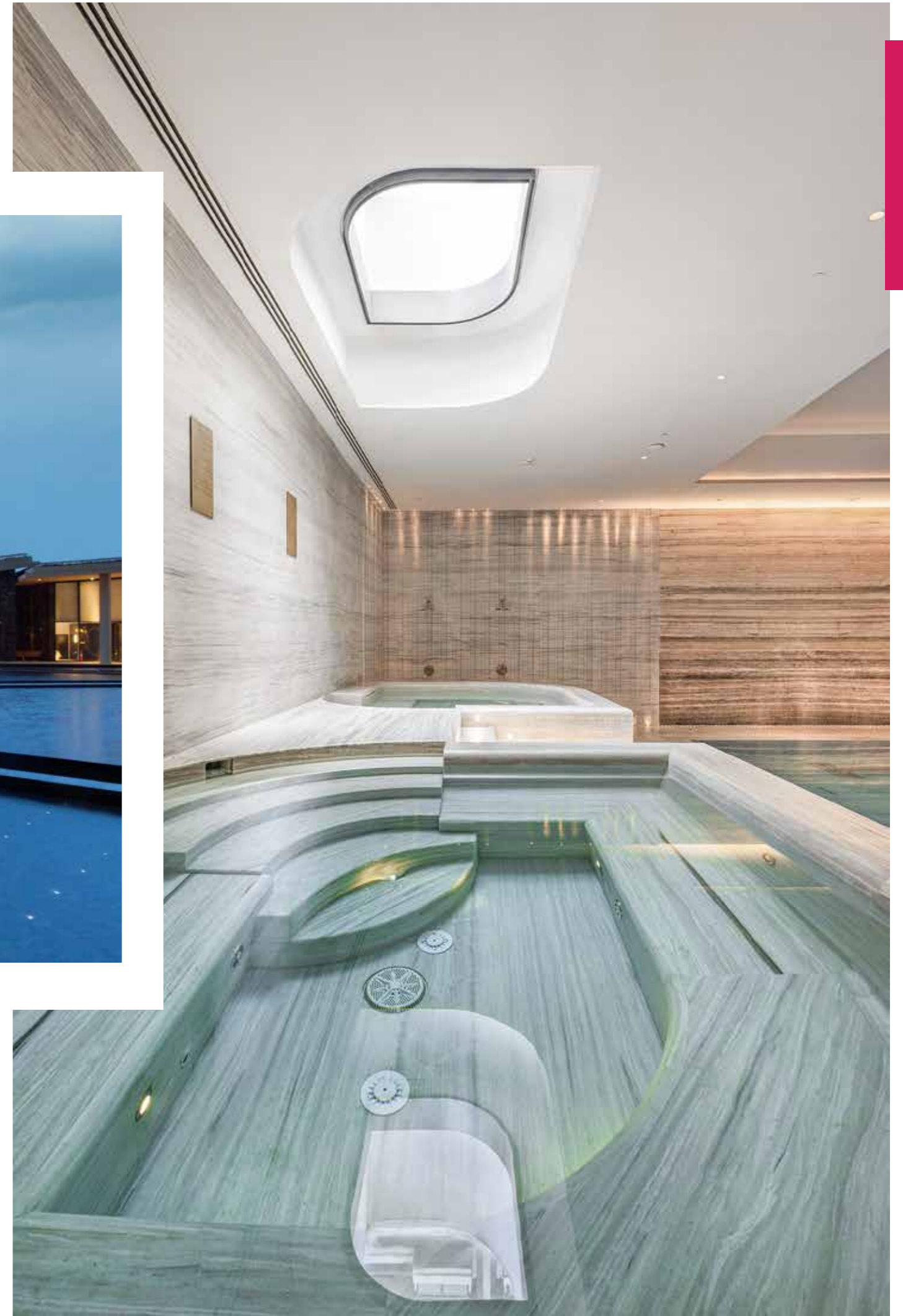


The Camellias Club petal-shaped roof



The Camellias Club

Designed at different levels of inclination, the roofs direct sunlight inside the building, and in some places, allow for a clear view of the sky.





The Camellias Club lobby

A WORK OF ART

A sculptural spiral staircase holds centre stage at the clubhouse, directly below a detailed 3D installation of a camellia flower on the triple-height ceiling.

This bronze-finished spiral staircase forms the centerpiece in the already grand lower level of the club. Leading from the arrival lobby, it winds its way to the level below over a glistening shallow water installation made of Moroccan black stone and set opposite a lush sunken garden.

The unique design is not only a work of art but also a feat of an engineering marvel: This monolithic RCC waist-slab structure is a free-flowing hanging form, supported only from the top and the bottom.

Exquisite grey marble inlaid with brass strips on the treads, a bronze finished running parapet, and LED strip lights set within the handrails and stairs create an eye catching functional sculpture – centering the room and the zones in the level below.



The grand staircase



THE WATER GARDEN

Inlaid with hundreds of twinkling, colour-changing fiber-optic points by Krislite, the Water Garden resembles a star-laden sky at night. When viewed from the apartments above, this celestially-inspired masterpiece gives the impression of a floral constellation.

Spread across 1.3 acres, the Water Garden is set with blue-glazed tiles and monolithic 100 mm thick mint and black granite coping and filled with fresh, constantly circulating groundwater.

Floating walkways cut across the water allowing direct access to the clubhouse from the residential towers. These walkways have been designed with overflow edges on either side and a sloping pathway, to make it seem as if you are walking on and in the water at different levels. The landscape design firm, SWA, envisioned residents interacting with water at different levels, allowing for a unique experience as one walks across the installation.

The ripples of the water act as a serene focal point to the complex, exuding a sense of calm throughout the day, and acting as a reflecting pool to the surrounding towering residential blocks and greenery.



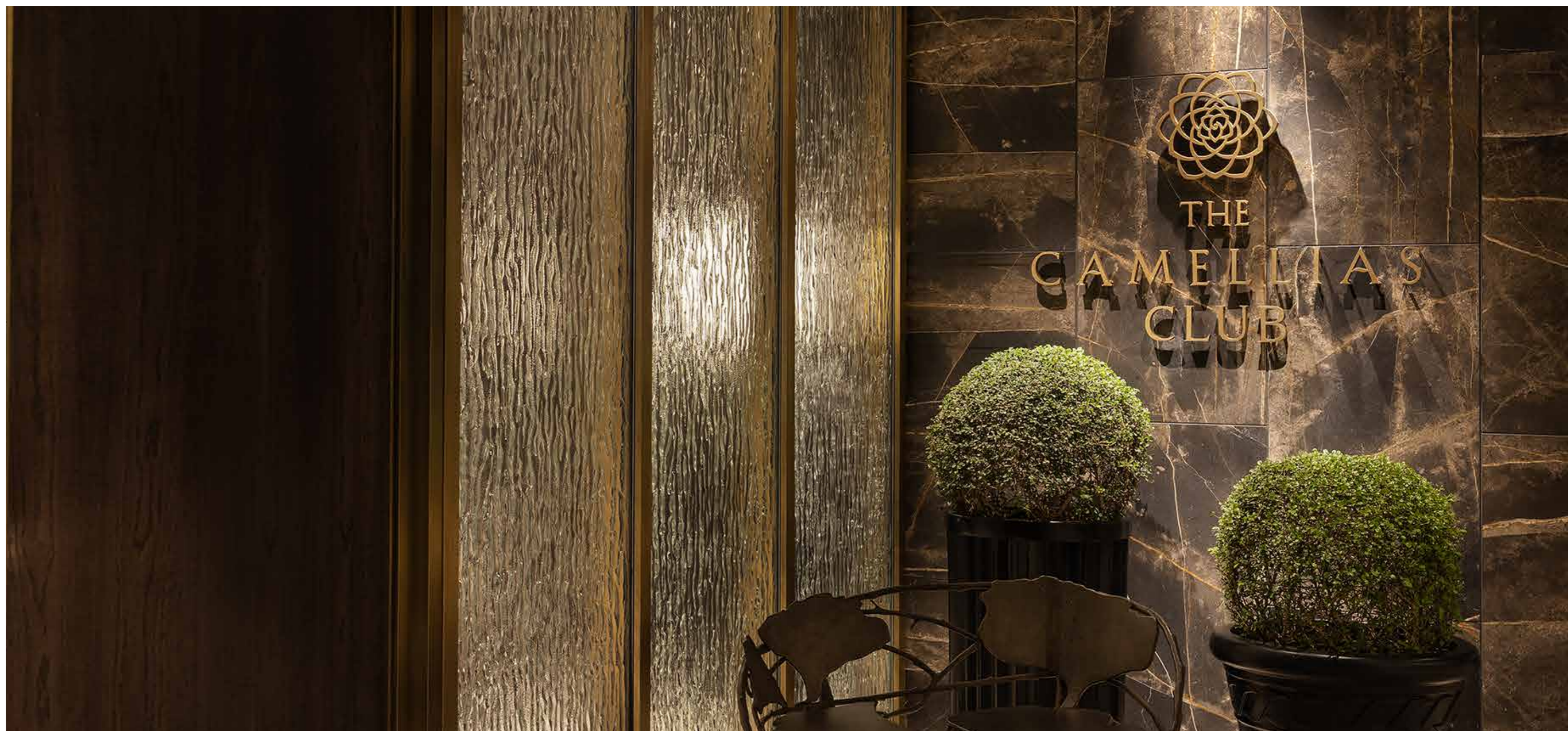
The floating walkways of the Water Garden



DISTINCTIVE MATERIALS

Over 600 different materials were used in the building of The Camellias Club. Each has been thoughtfully selected for its unique properties, ensuring a melding of not only function but aesthetics, and providing elements of surprise as you pass from one zone to another.

The porte cochère, the primary entrance to the clubhouse for all visiting guests is crafted out of **metal rust marble**. The arrival lobby flooring is laid in **grey Venezuelan marble** from Spain with borders set in **Moroccan black stone**. The walls are panelled in leather with gold tipping and metal trims. And each of the elevators is clad in luxurious leather panels with hand-cut floral relief patterns.



The Camellias Club Entrance



Raku-fired tiles

At J, walls are adorned with green **Raku-fired tiles** – this age-old technique originated in Japan, creating an incredible glaze on the ceramic which varies in tone and texture each time. When seen up close, these look individual and disparate, but when laid together create an organic and unique visual across the wall.



J - The Health-food café and juice bar



Blue Palisandro stone

At the Pan Asian Private Dining Room, the kitchen wall cladding is made from **blue Palisandro stone** – a unique blue-grey marbled with flecks of pink and cream running through – an elegant yet functional design feature.

The Pan-Asian kitchen at Meros



Lapis blue marble

The bar counter at Intimo, the private dining and party suite, is crafted from an exquisite **Lapis Blue Marble** sourced from Brazil, which is accentuated by a handcrafted bespoke chandelier, creating an opulent atmosphere.



Travertine marble (Vitality pool)

The walls of the Vitality Pool are adorned in beautiful Italian **Travertine marble** – the natural characteristics of the stone create soothing lines and patterns to accentuate the rejuvenating experience.

The indoor 25m heated pool is laid with imported **Bianco Cavalli marble** from Turkey, which, when naturally lit by the skylights above, creates an otherworldly experience.

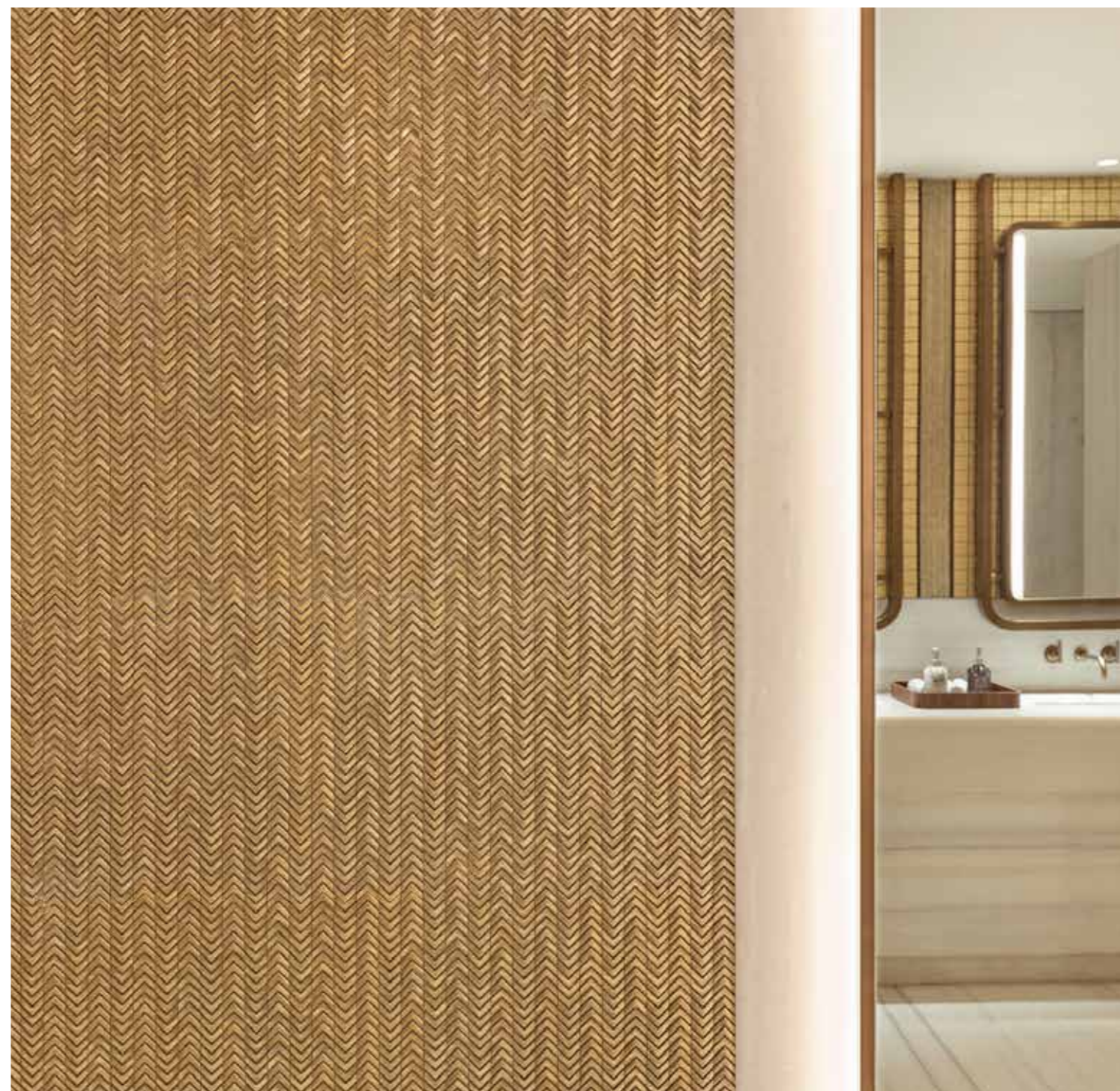




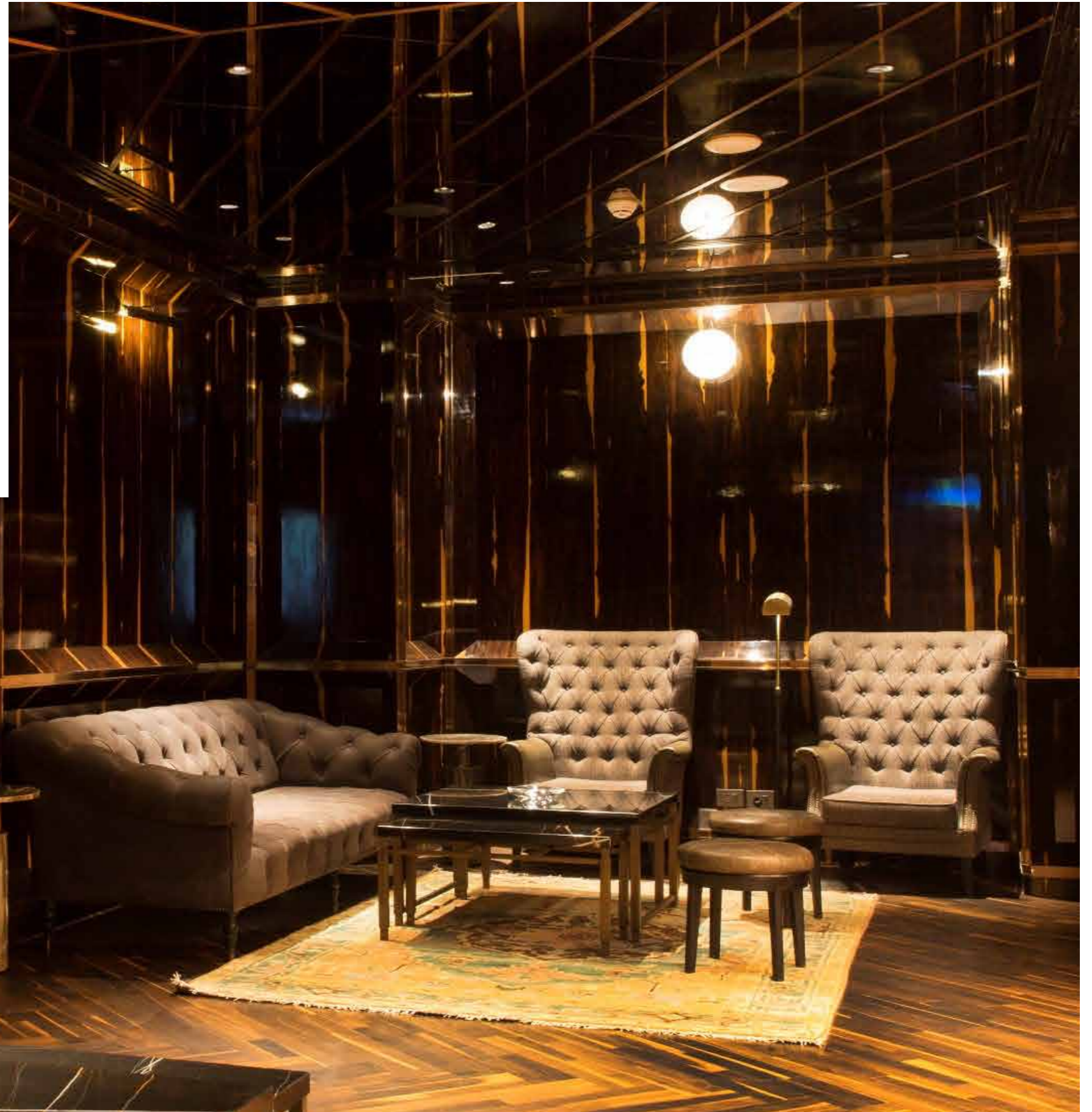
Sukabumi stone [Outdoor pool]

The outdoor swimming pools are laid with tiles of **green Sukabumi stone** from Indonesia. Apart from their aesthetic beauty, they also have water-purifying properties. This unique stone contains zeolites, minerals that naturally reduce the ammonia levels in the water.

The East washroom's walls and floors are clad in beautiful **Bianco Lhasa marble** from Vietnam and the **metal tiles** have been imported from Spain.



Metal tiles (East washroom)



Humidor lounge

The Humidor lounge has a specially designed **Jerry Coat veneer paneling.**



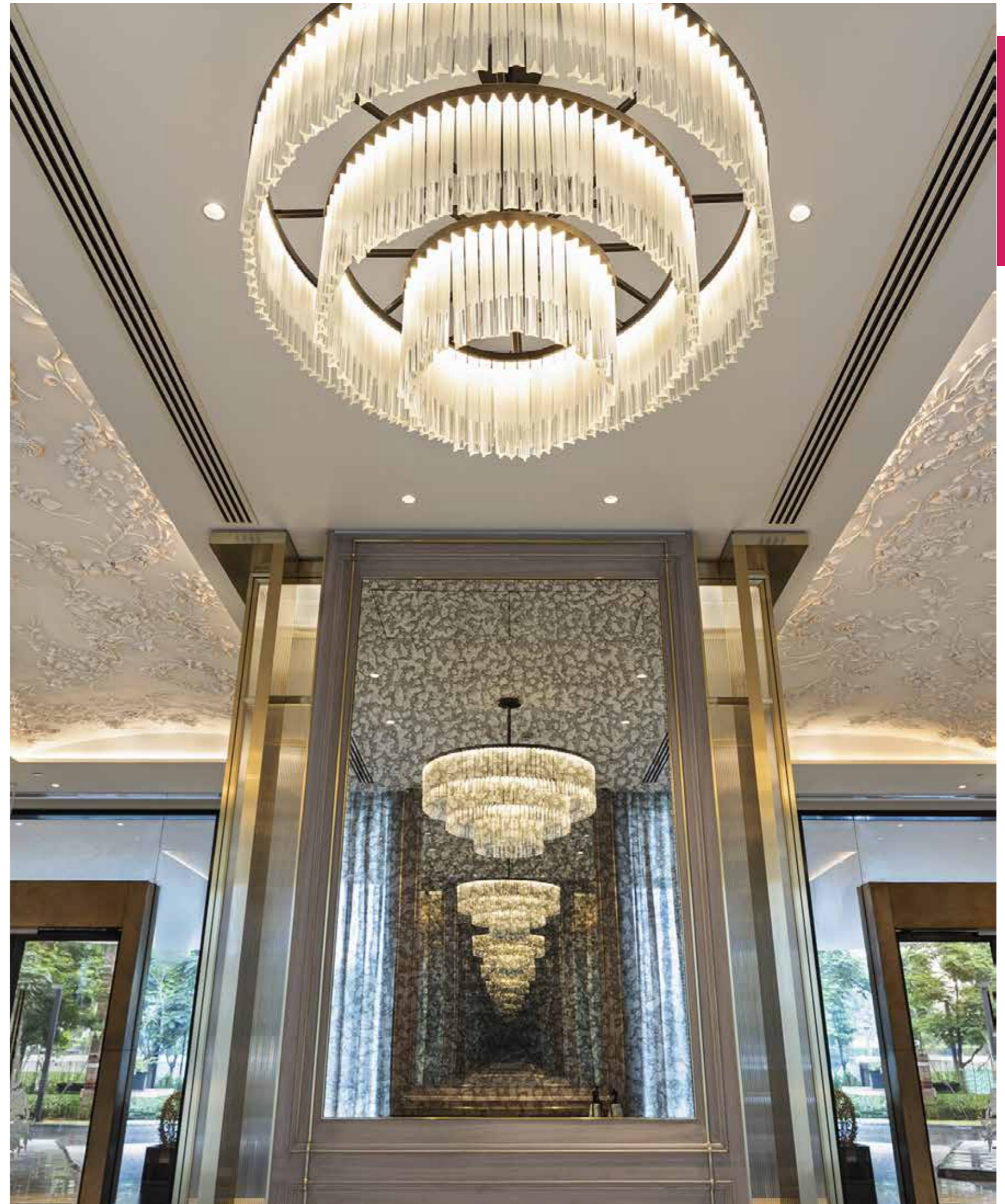
OUR LIGHTING PHILOSOPHY

The lighting across The Camellias has been designed by Arnold Chan,
Principal of Isometrix Lighting+Design, London.

Carefully curated, the ambient treatment and the corresponding lighting in each zone has been designed to reflect their individual energies and characters. For example, the Social Energy zone features a heightened luxurious design, whilst the Active Energy zone has a distinctly industrial look and feel, which is in contrast to the more casual and calming lighting in the Relaxed Energy zone. "It [the lighting] had to be integrated into the design, to enhance each section according to its functions and create the right ambience" explained Arnold Chan, on the significance and varied lighting treatments used across The Camellias Club.

TOWER LOBBY

Crystal pendant chandeliers hang from the ceilings of the residential tower lobbies, imparting a soft muted glow that illuminates the vast space.



Tower lobby



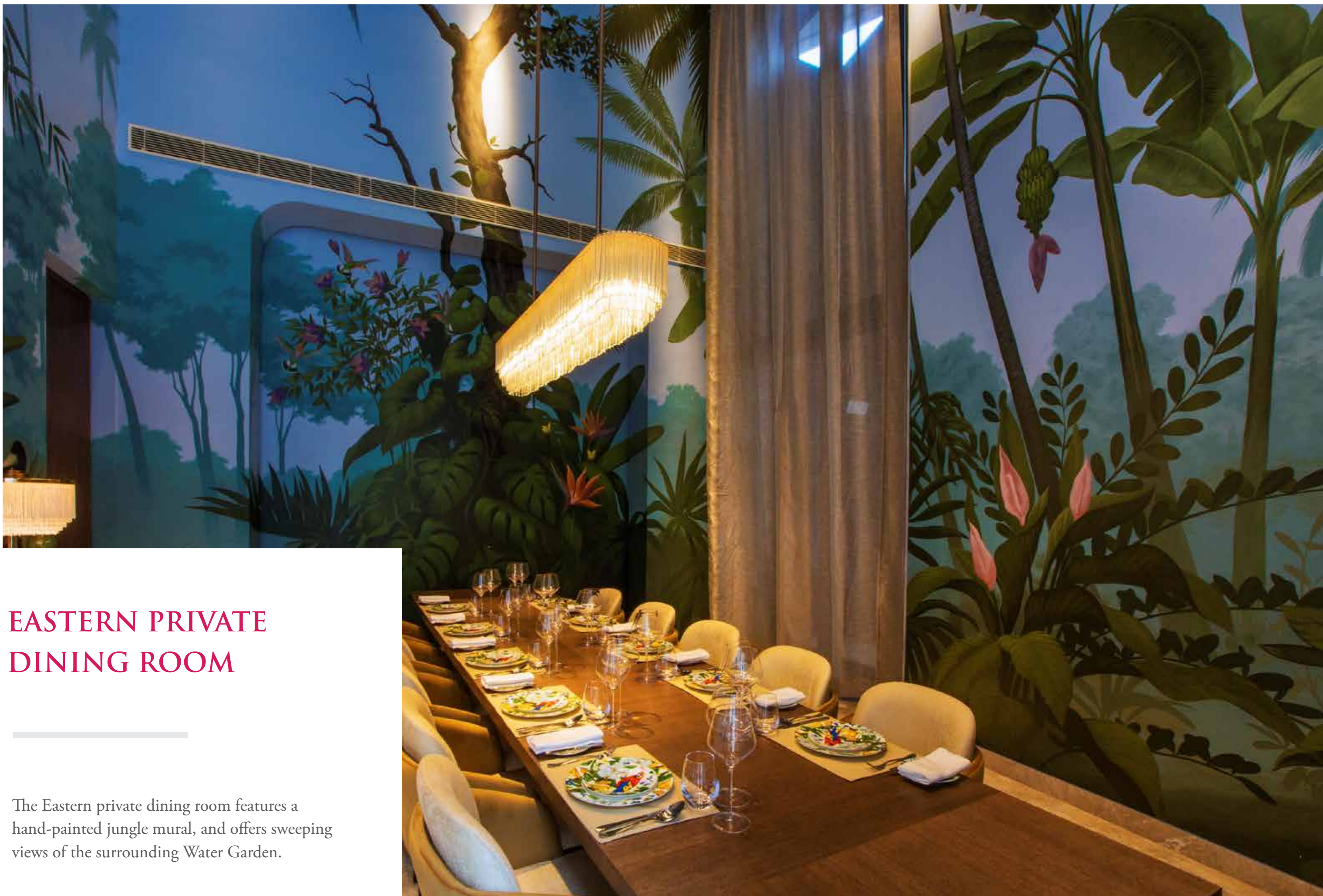
The Camellias Facade

FAÇADE LIGHTING

The façade is subtly lit, accentuating the ornate GRC grills and the curve of the sweeping canopies, gently highlighting the elements without overpowering.



ARTFUL DÉCOR



EASTERN PRIVATE DINING ROOM

The Eastern private dining room features a hand-painted jungle mural, and offers sweeping views of the surrounding Water Garden.



Champagne leafing (The Camellias Ballroom)

THE CAMELLIAS BALLROOM

The Camellias Ballroom's ceiling features exquisite champagne-coloured leafing with majestic gold doors leading to the pre-function hall.

TOWER LOBBY ENTRANCE

The bronze-cast glass doors at the tower lobbies which open into the hallway exude a sense of grandeur and luxury. Each residential lobby features double-heighted partly vaulted ceilings, filled with intricate floral handcrafted relief-work, crafted in white monotone.



Tower lobby entrance



Tower lobby ceiling

TOWER LOBBY CEILING

Ceiling patterns showcase exquisite Indian craftsmanship, and embody a timeless, classic European grandeur, while their single tone exudes a soothing richness. The walls are panelled in a combination of Pama veneer and wallpaper, both imported from Italy, whilst the floor is laid with White Butterfly marble from Greece, and surrounded by a border of imported grey marble. The symphony of rich materials in soft undertones is understatedly elegant.

BACCARAT STORE AT THE CAMELLIAS CLUB

For the first time in India, Baccarat, the fine crystal glassware brand from France, has opened a pop-up store at The Camellias Club exclusively for residents.

Founded in 1764, it has long been a favourite of European royalty, notably King Louis XV, and eventually earned a reputation for its early designs of crystal paperweights and glass figurines. Known for its spectacular chandeliers, delicate blown glassware, and crafted decanters and bottles, there is a Baccarat piece for every corner of your home.

Browse through the shop for a great selection of desk ornaments, bar accessories, and decoratives to elevate your home.

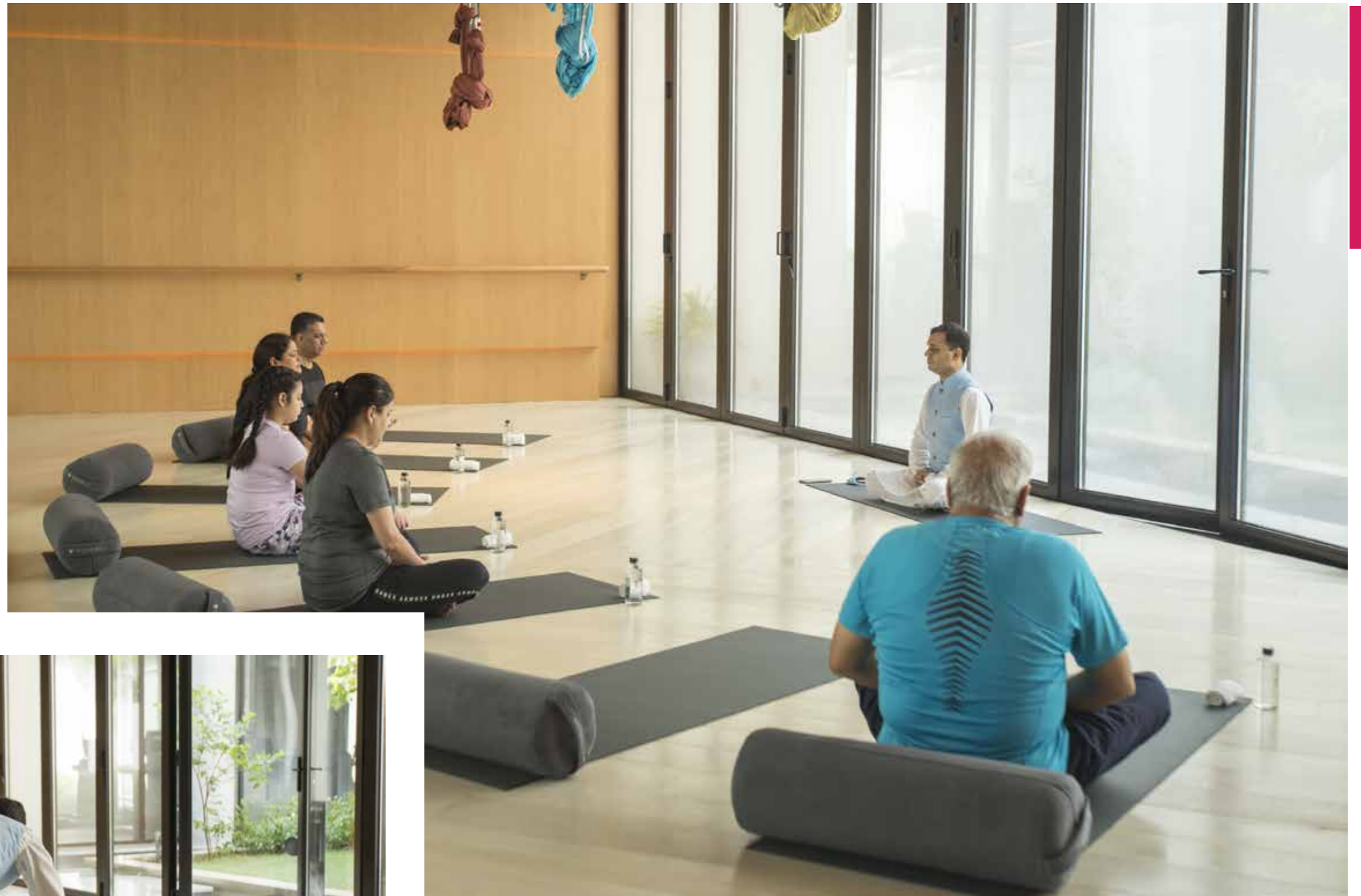


Baccarat store



CUSTOMIZED EXPERIENCES

A series of masterclasses with experts at The Camellias Club



WELLNESS MASTERCLASS
WITH DR. PRAMOD



FITNESS MASTERCLASS WITH VESNA JACOB

CULINARY MASTERCLASS WITH CHEF AJAY





BAKERY MASTERCLASS WITH
CHEF MANUMON



BOWLING MASTERCLASS



ROCK CLIMBING SESSIONS

NEWSLETTER



THE CAMELLIAS NEWSLETTER
JULY 2021

Thank You

 +91 8586866824