



# **Nestle in nature**

---

Gurgaon Greens,  
Sector 102, Gurugram

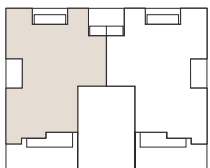
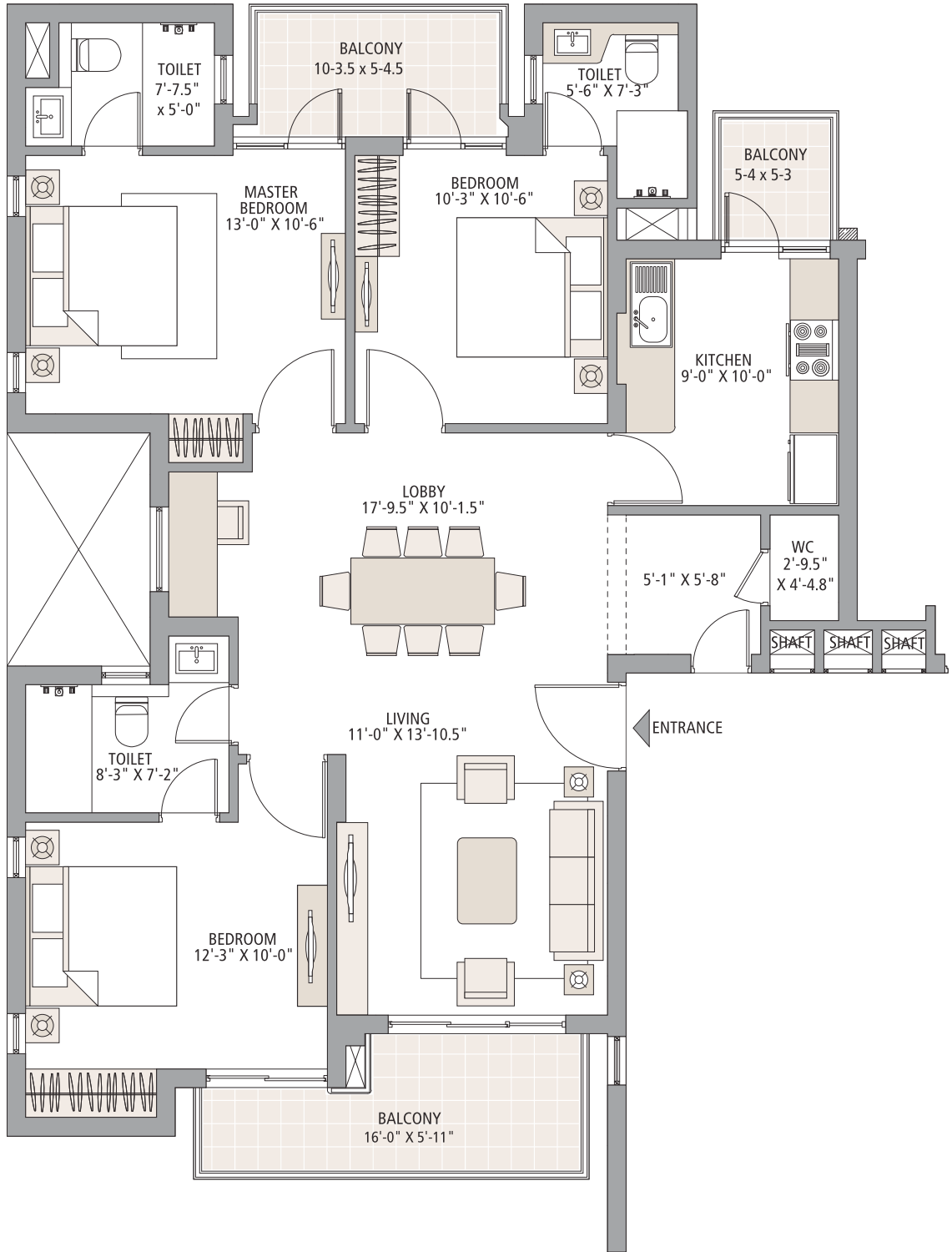
## **FLOOR PLAN**

**Call: +918586866824**

3 Bedroom + 3 Bathroom + Living + Dining

Carpet Area: 95 sq. mtr. (1,022.58 sq. ft.) | Balcony Area: 15.19 sq. mtr. (163.51 sq. ft.)

Saleable Area: 153.28 sq.mtr. (1,650 sq.ft.)



A revision of above plans has been applied with the authorities and same are also available for inspection before booking. Soft furnishing, cupboards, kitchen cabinets, furniture and gadgets are not part of the offering. All dimensions are from Masonry to Masonry. 1 sq. mtr. = 1.196 sq. yds. and 1 sq. mtr. = 10.764 sq. ft.

# MASTER PLAN



## LEGEND

- A. Entry
- B. Ornamental Water Body
- C. Modern Clubhouse
- D. Swimming Pool
- E. Central Greens
- F. Water Body
- G. Jogging Track
- H. MLCP and Tennis Courts
- I. Gurgaon Greens Arcade at ground level



GREEN BELT

75 M WIDE ROAD AS PER MASTER PLAN

**THANK YOU**

**Call: +918586866824**