



Live in the lap of nature

Imperial Gardens, Sector 102, Gurugram

Call: +918586866824

Legend

- A. Modern Clubhouse
- B. Swimming Pool
- C. Central Greens
- D. Pool Greens
- E. Hideout Greens
- F. The Culture Court
- G. The Courts
- H. Jogging Track
- I. Imperial Gardens Arcade at ground level
- J. Kids Play Area
- K. Entry Plaza
- L. Dew Greens
- M. EWS
- N. Nursery School
- O. MLCP



HRERA No. 208 of 2017 (Tower no. 3, 4, 5, 6 and 7)

MASTER PLAN

LOCATION ADVANTAGES

IMPERIAL GARDENS, SECTOR 102, GURUGRAM

- Excellent connectivity to Aerocity, Dwarka and IGI Airport (T3)
- Adjoining to 150 meter Dwarka Expressway and 75 meter wide sector road
- Proximity to business and educational hubs, AIIMS and Delhi Public School

Pool Greens

An outdoor swimming pool with one exclusive section for kids, secluded by greens all around

The Culture Court

Open amphitheatre surrounded by gardens where the entire community comes together

Hideout Greens

A dedicated kids' play zone

The Courts

Tennis and roof-top basketball courts creating a perfect blend of live and play theme

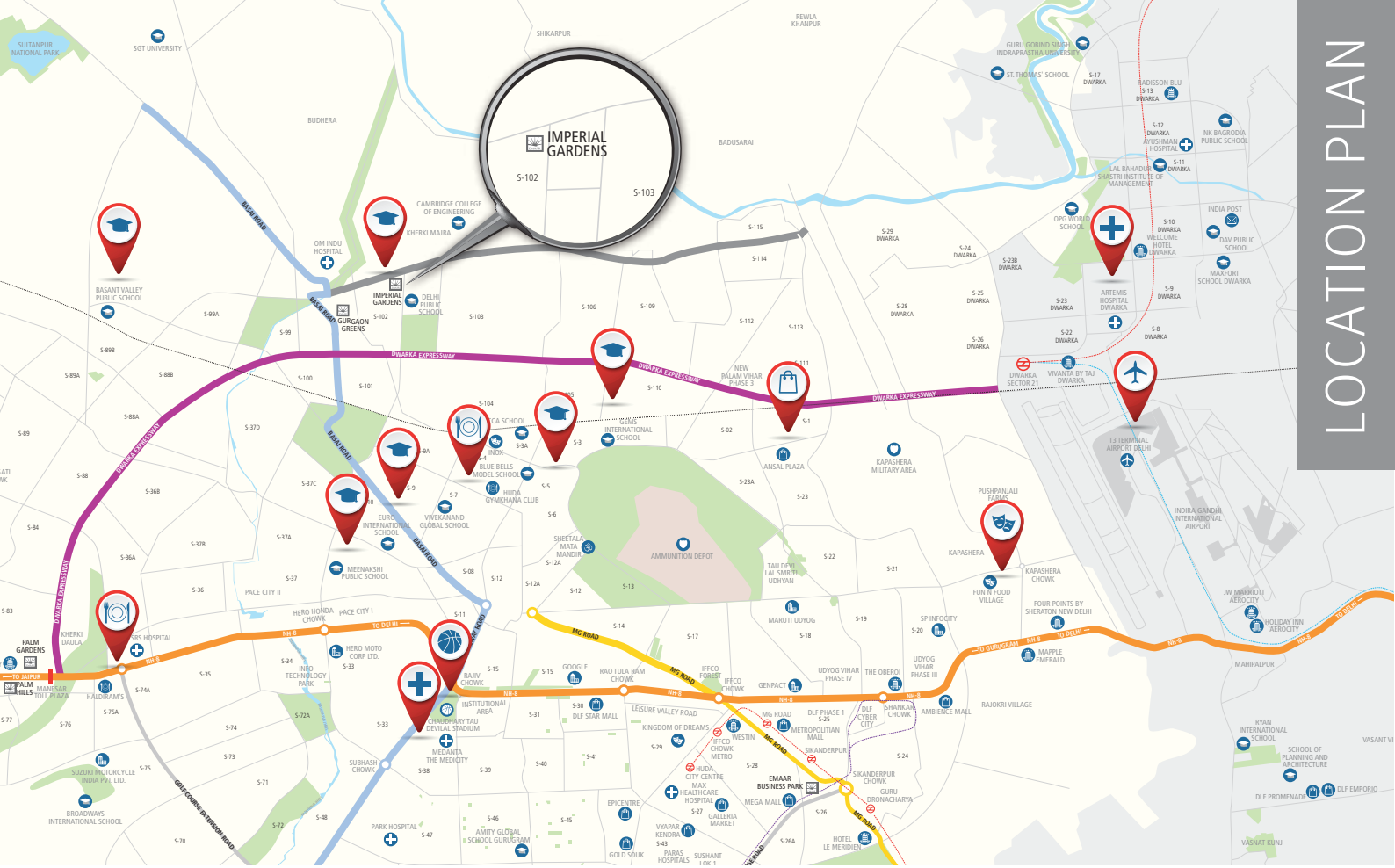
Central and Dew Greens

A central garden designed to add to the greenery all around. Jogging track through gardens along the periphery of the project

Modern Clubhouse

Powered with health and recreational facilities

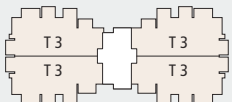
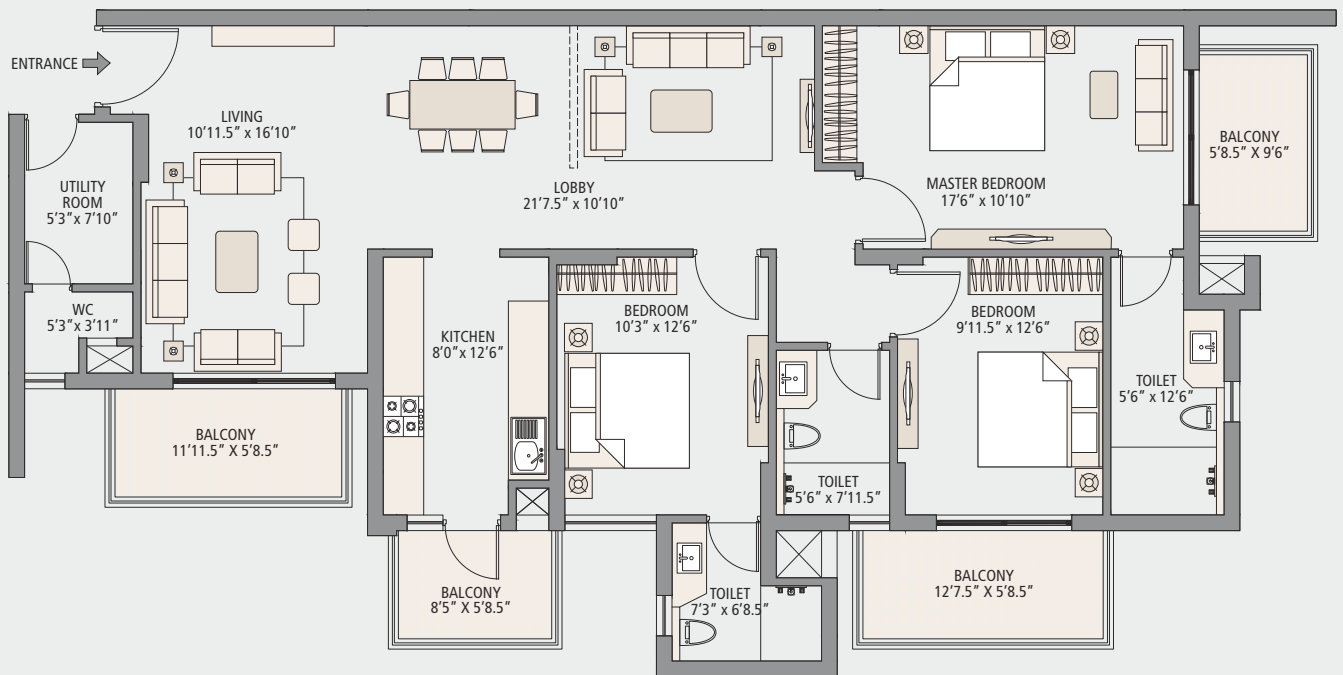




- SCHOOL/ COLLEGE
 - AIRPORT
 - HOSPITAL
 - HOTEL
 - OFFICE
 - ENTERTAINMENT ZONE
 - SHOPPING MALL
 - SPECIAL ECONOMIC ZONE (SEZ)
 - POST OFFICE
 - SPORTS COMPLEX
 - GOLF COURSE
 - DEFENCE AREA
 - CLUB/ FOOD COURT
 - BIO DIVERSITY PARK
 - TEMPLE
- DELHI METRO
 ---- RAPID METRO
 ---- AIRPORT METRO
 ---- RAILWAY LINE

Map not to scale

Typical Floor - Living | Dining | 3 Bedrooms | 3 Toilets | Lounge | Kitchen | Utility Room
 Saleable Area: 188.12 sq.mtr. (2,025 sq.ft.)
 Carpet Area: 116.66 sq. mtr. (1,255.73 sq. ft.) | Balcony Area: 22.70 sq. mtr. (244.34 sq. ft.)



Soft furnishing, cupboards, kitchen cabinets, furniture and gadgets are not part of the offering. All dimensions are from Masonry to Masonry. 1 sq. mtr. = 1.196 sq. yds. and 1 sq. mtr. = 10.764 sq. ft.

THANK YOU

Call: +918586866824