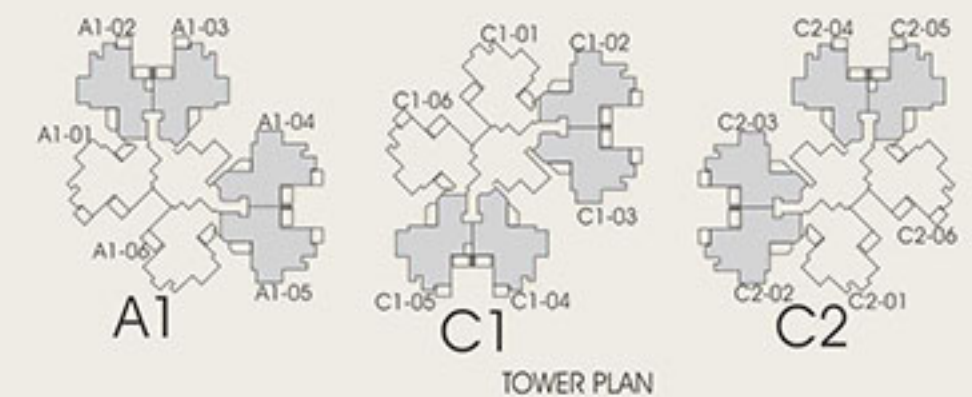
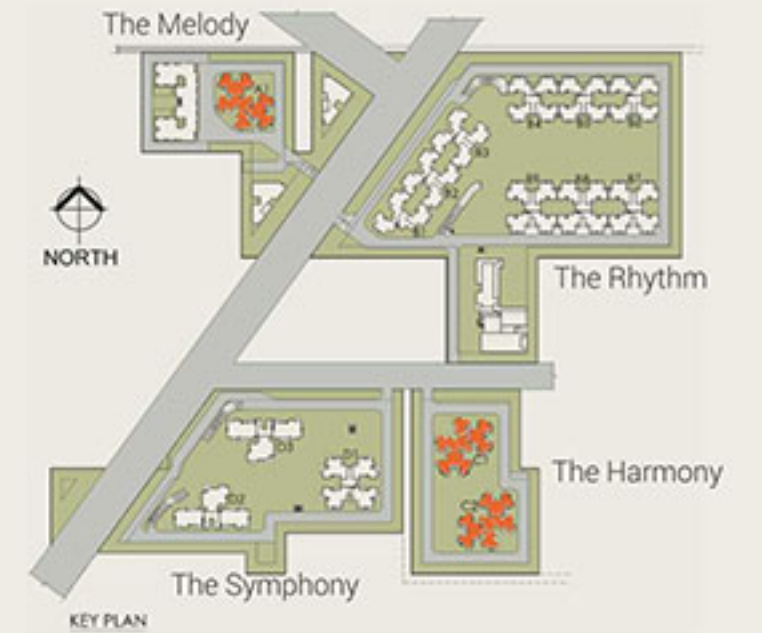


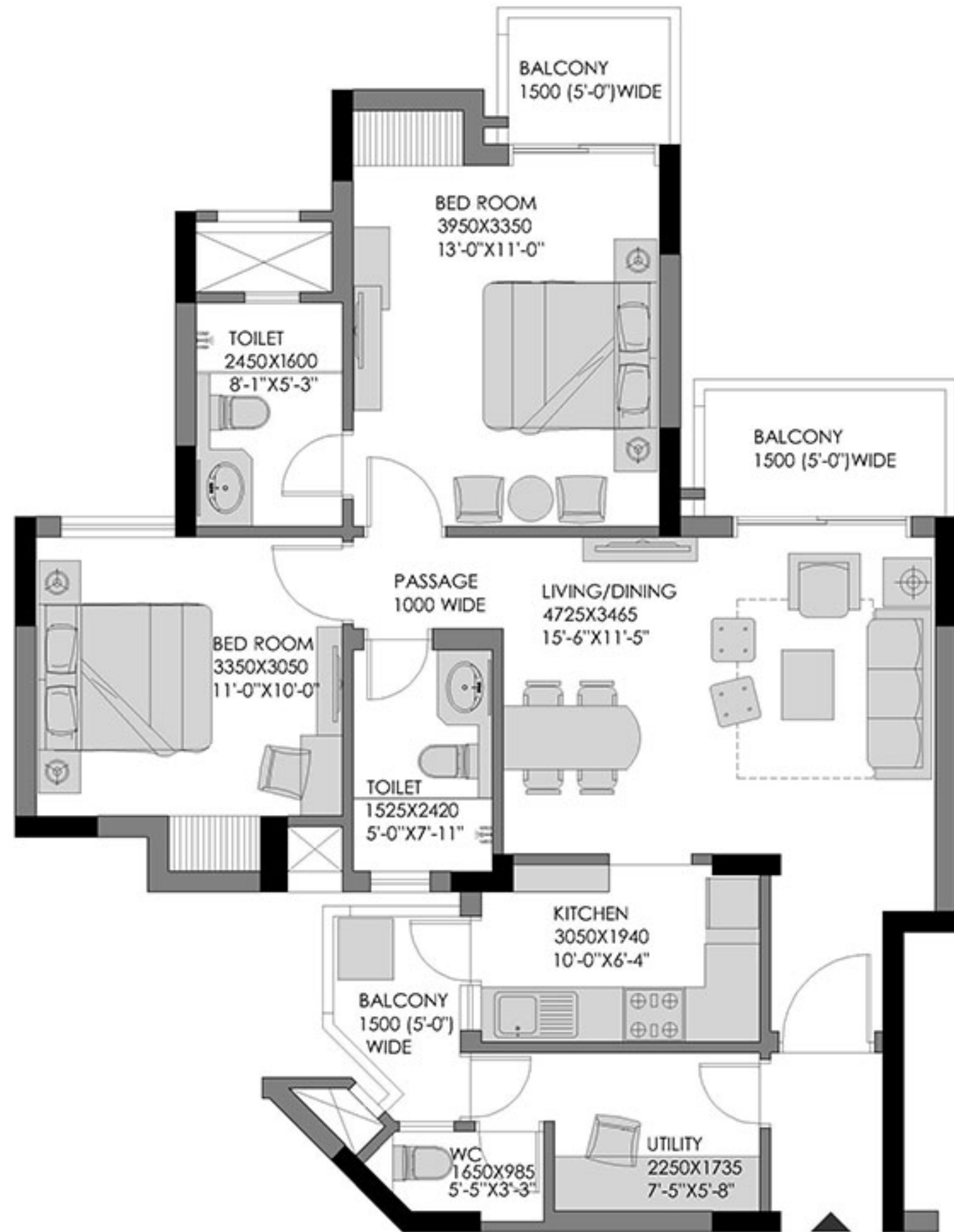
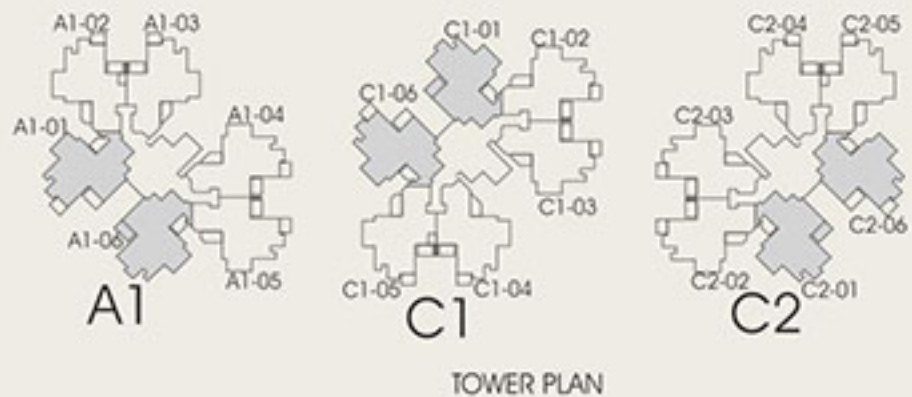
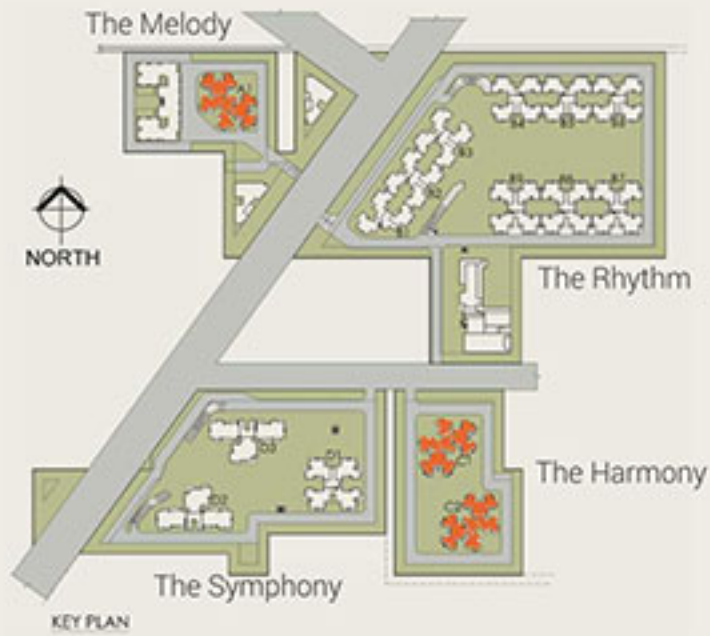
2 BHK + 2 Toilet + Utility
 Unit Plan: Type 1A
 (Tower A1, C1 & C2)

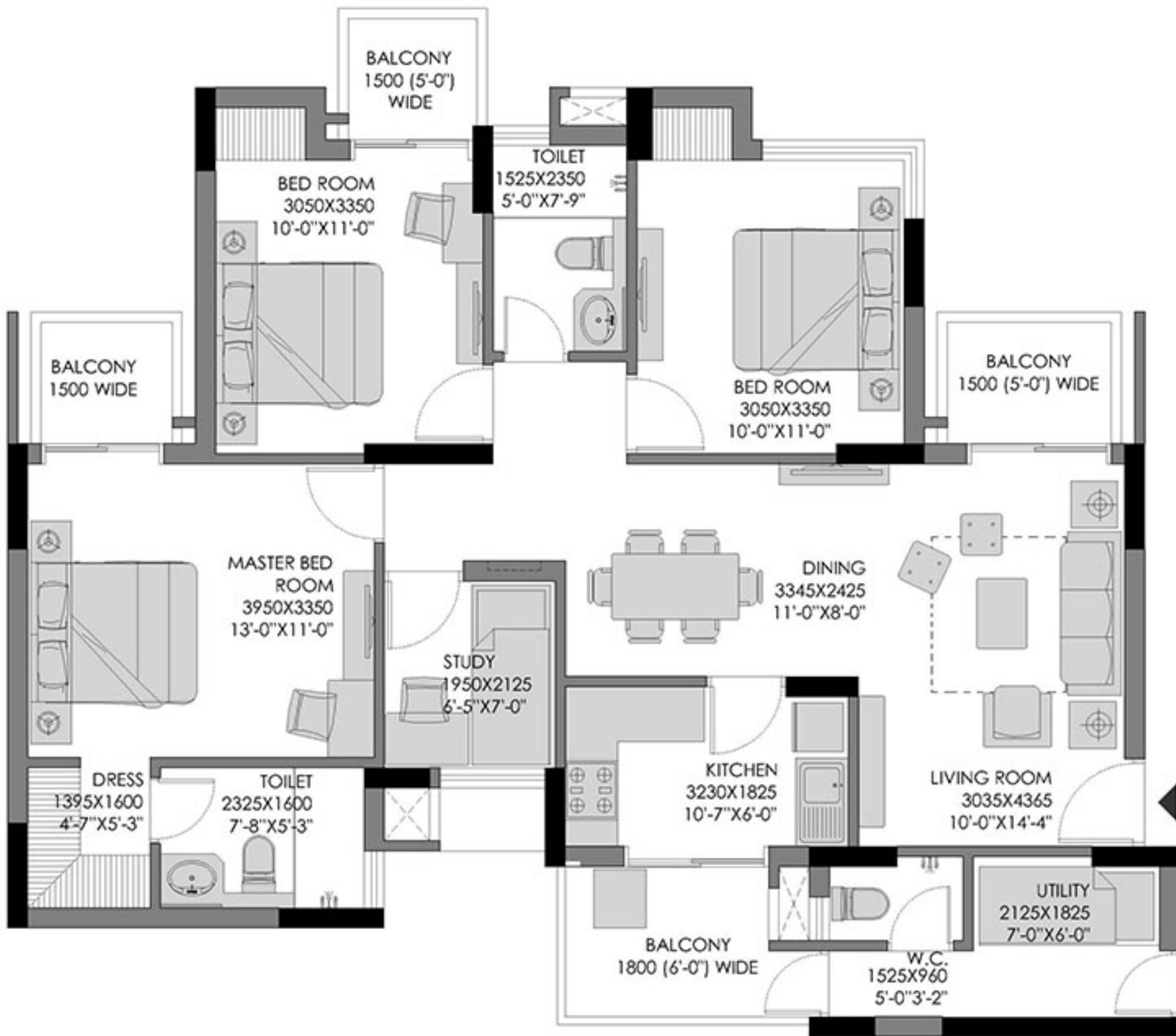
Carpet Area (Sqm): 67.00
 Carpet Area (Sqft): 721.19
 Built-up Area Including Balcony
 Area (Sqft): 970.59
 Reference Area (Sqft): 1283



2 BHK + 2 Toilet + Utility
 Unit Plan: Type 1B
 (Tower A1, C1 & C2)

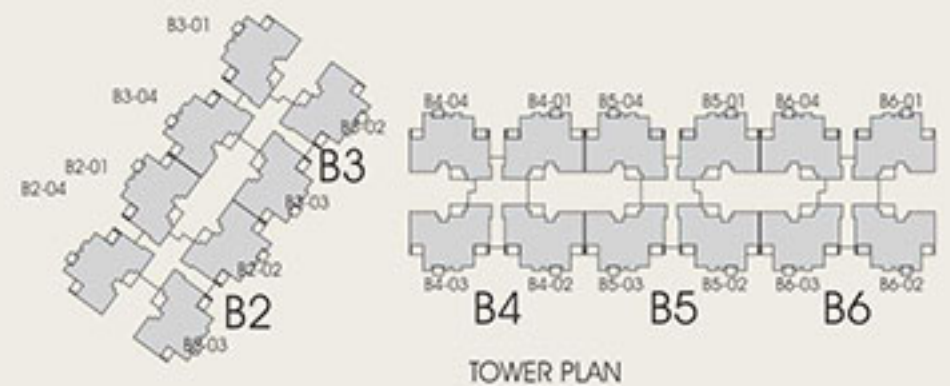
Carpet Area (Sqm): 68.23
 Carpet Area (Sqft): 734.43
 Built-up Area Including Balcony
 Area (Sqft): 978.23
 Reference Area (Sqft): 1283





3 BHK + 2 Toilet + Study + Utility
 Unit Plan: Type 2A
 (Tower B2 - B6)

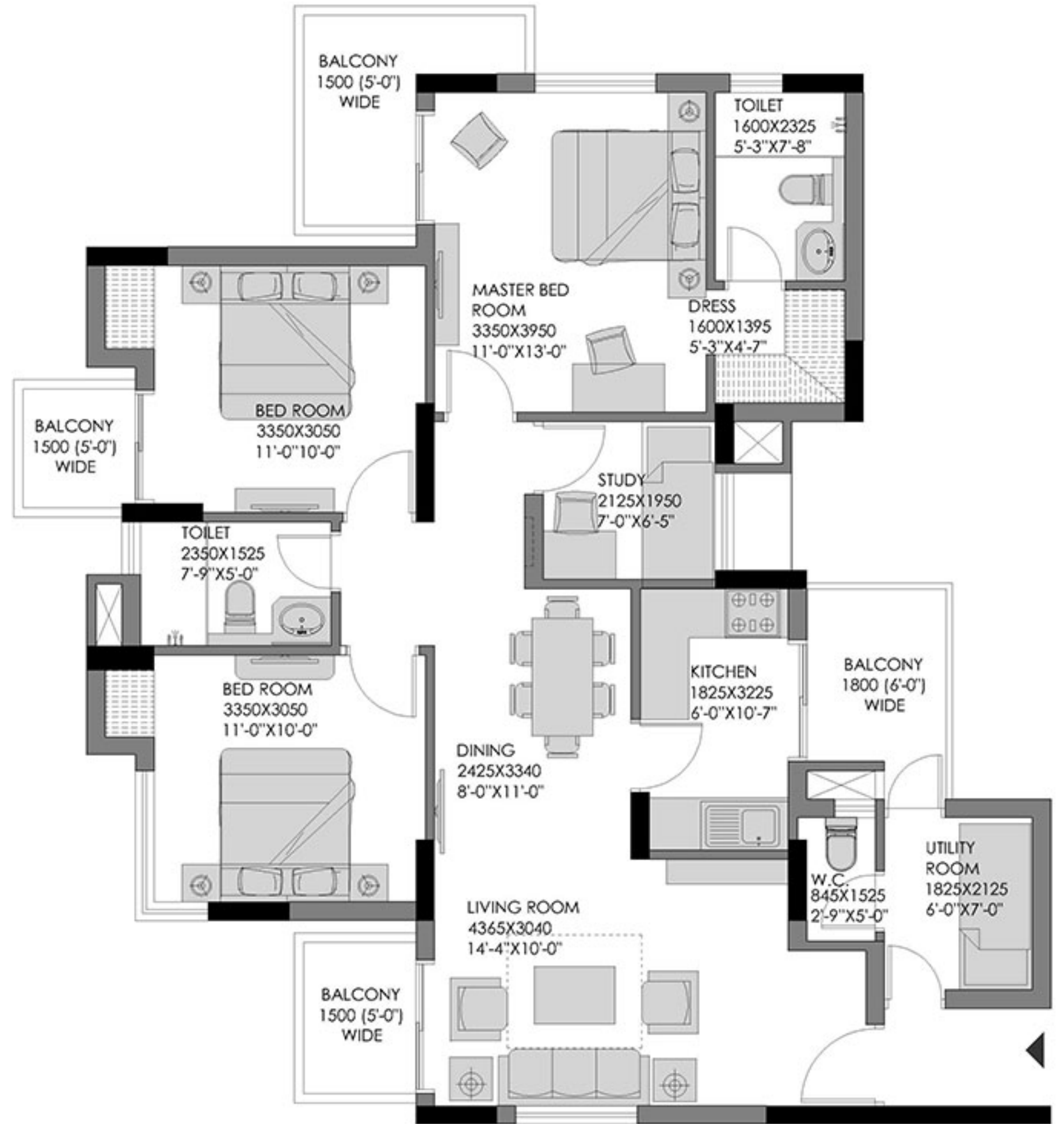
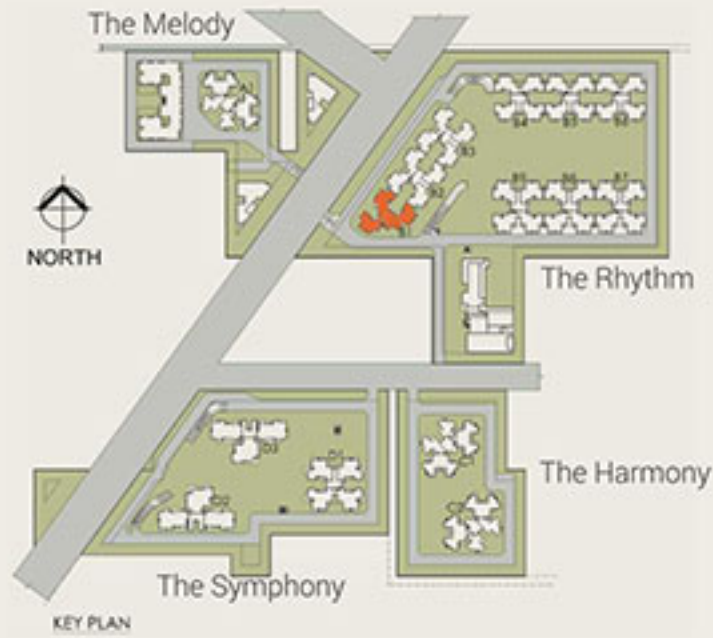
Carpet Area (Sqm): 90.55
 Carpet Area (Sqft): 974.68
 Built-up Area Including Balcony
 Area (Sqft): 1275.53
 Reference Area (Sqft): 1758



Carpet Area as per RERA, 2016.

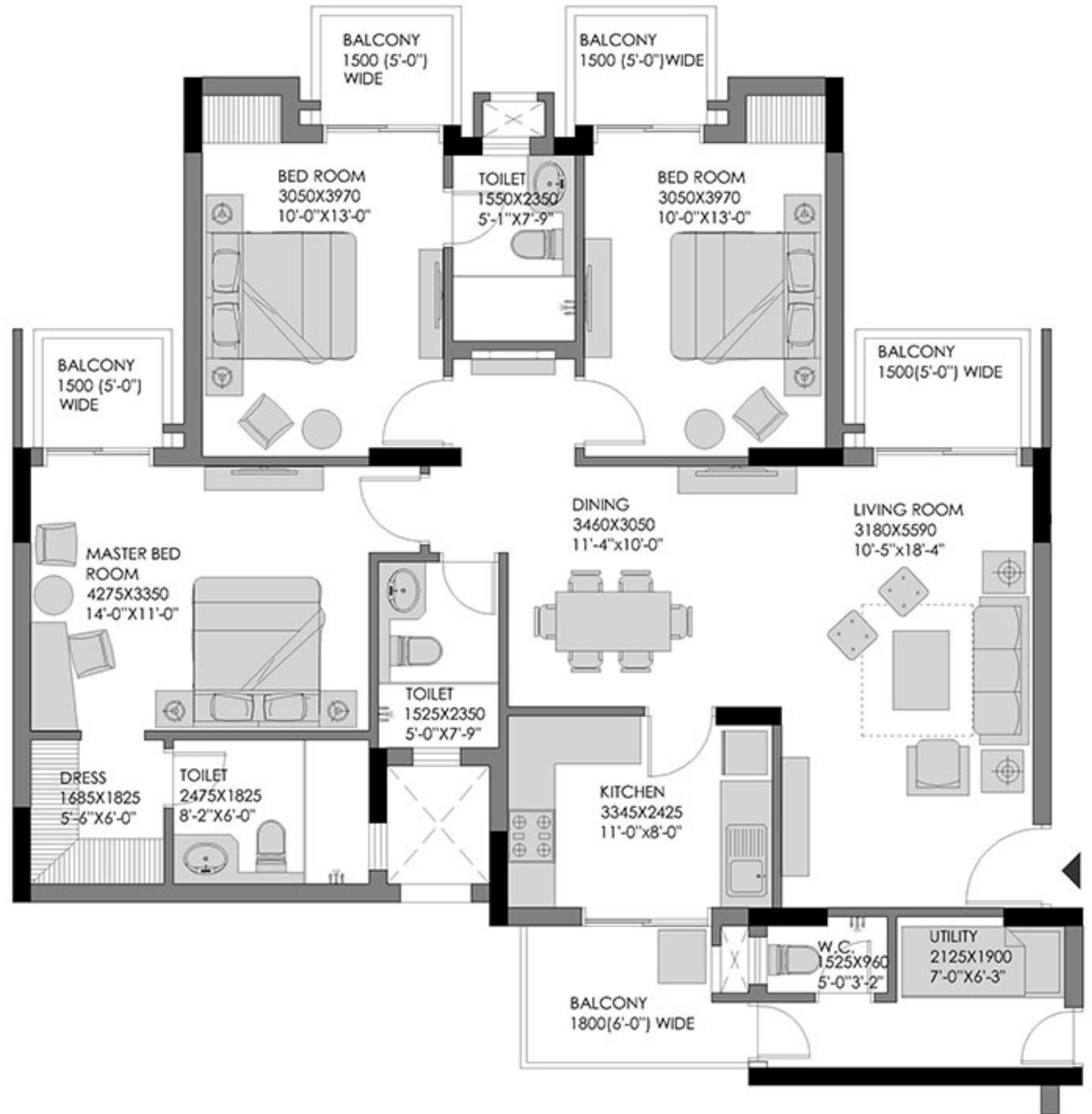
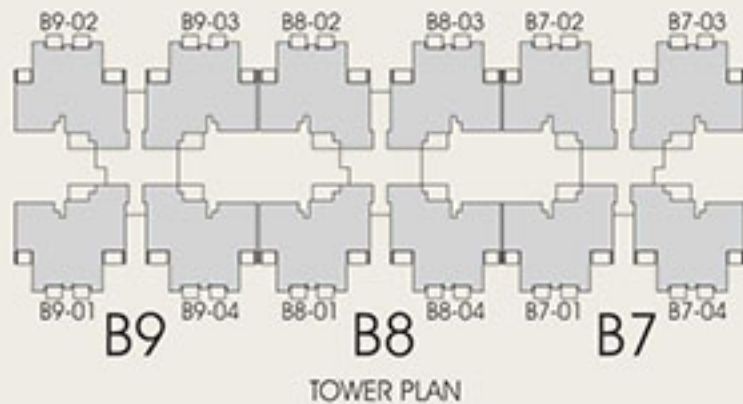
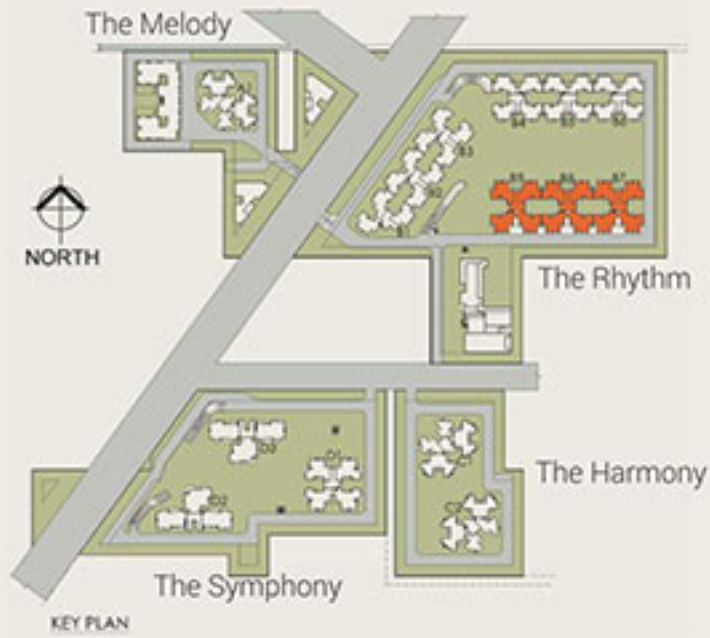
3 BHK + 2 Toilet + Study + Utility
 Unit Plan: Type 2B
 (Tower B1)

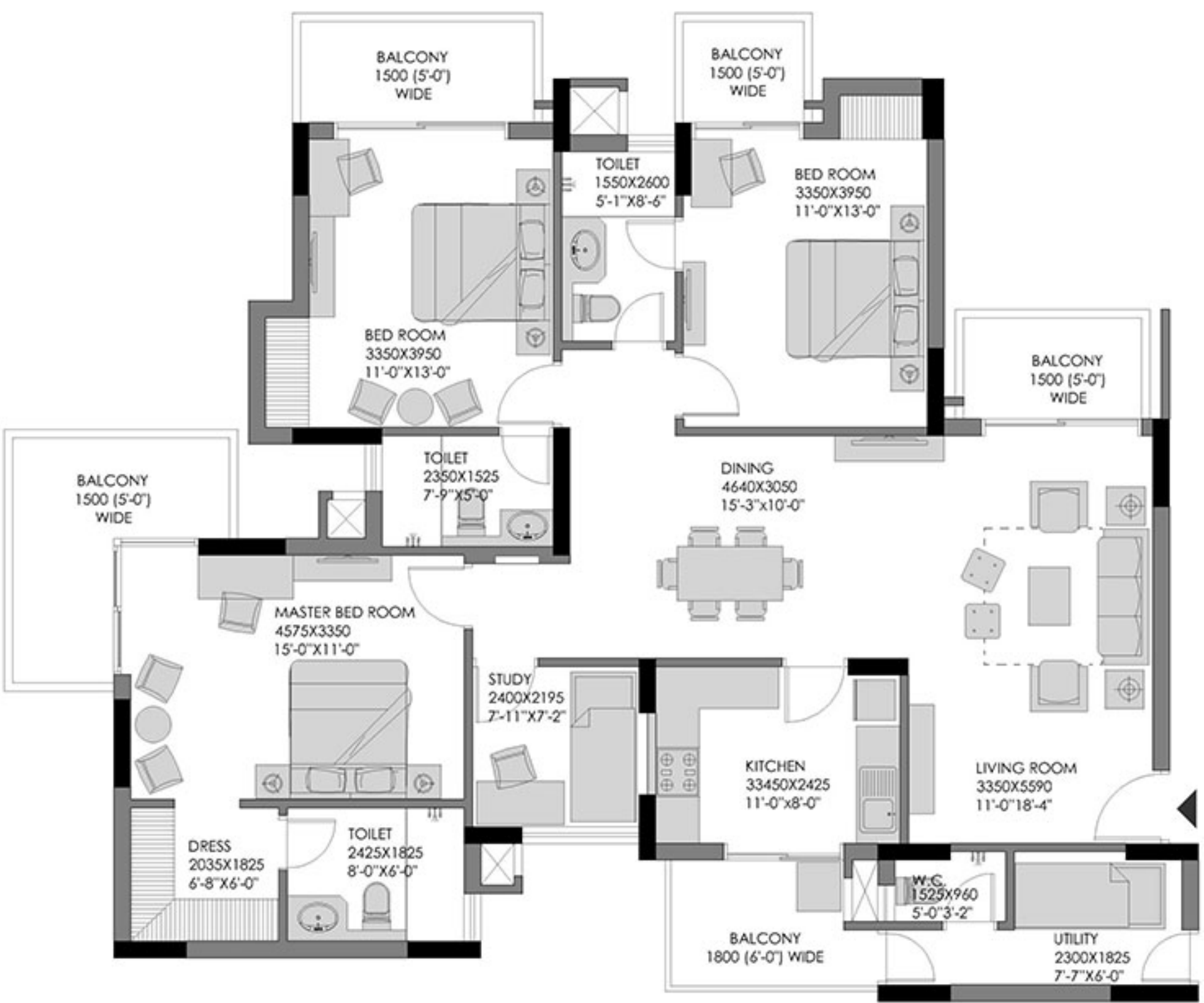
Carpet Area (Sqm): 91.64
 Carpet Area (Sqft): 986.41
 Built-up Area Including Balcony
 Area (Sqft): 1338.29
 Reference Area (Sqft): 1758



3 BHK + 3 Toilet + Utility
 Unit Plan: Type 3
 (Tower B7, B8 & B9)

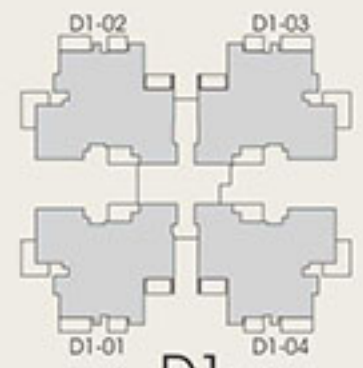
Carpet Area (Sqm): 106.00
 Carpet Area (Sqft): 1140.98
 Built-up Area Including Balcony
 Area (Sqft): 1500.29
 Reference Area (Sqft): 2003





3 BHK + 3 Toilet + Study + Utility
 Unit Plan: Type 4
 (Tower D1)

Carpet Area (Sqm): 120.96
 Carpet Area (Sqft): 1302.01
 Built-up Area Including Balcony
 Area (Sqft): 1771.32
 Reference Area (Sqft): 2338



D1
 TOWER PLAN