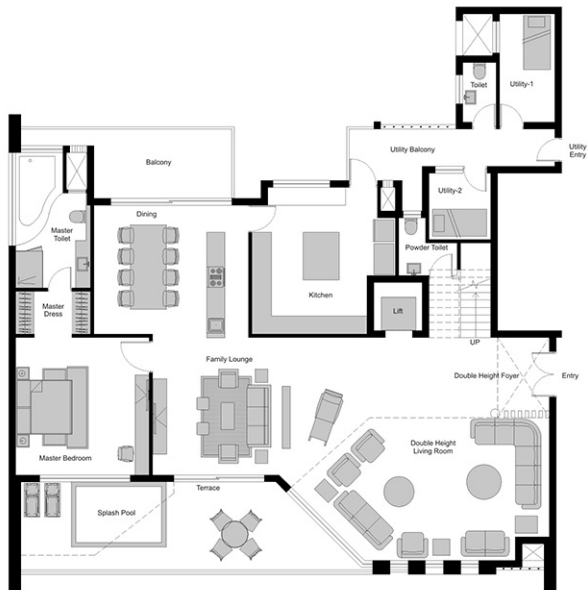
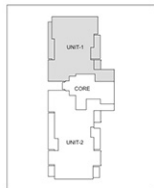


Waving Teak (Penthouse) Unit Plan

Penthouse - Lower Level Plan (4 BHK)

Sale Area: 6700 (sq. ft.)



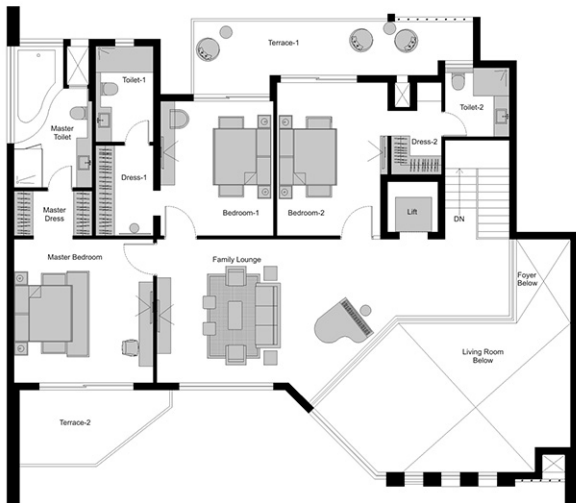
	MM	Feet-Inch
Master Bedroom	4570 x 4430	15'-0" x 14'-6"
Double Height Foyer	1715 x 2670	5'-8" x 8'-9"
Double Height Living Room	4745 x 7275	15'-7" x 23'-10"
Kitchen	4785 x 4880	15'-8" x 16'-0"
Dining	5130 x 4280	16'-10" x 14'-0"
Family Lounge	4570 x 6095	15'-0" x 20'-0"

	MM	Feet-Inch
Terrace	11320 x 3075	37'-2" x 10'-0"
Balcony	4650 x 2380	15'-3" x 7'-10"
Utility Balcony	6905 x 1850	22'-8" x 6'-0"
Utility-1	1930 x 3600	6'-0" x 11'-10"
Utility-2	2050 x 2200	6'-9" x 7'-3"
L/R	1600 x 1600	5'-3" x 5'-3"

	MM	Feet-Inch
Powder Toilet	1940 x 1915	6'-4" x 6'-3"
Master Toilet	2485 x 4495	8'-2" x 14'-9"
Toilet	1105 x 2210	3'-6" x 7'-3"
Master Dress	2485 x 1420	8'-2" x 4'-8"

Waving Teak (Penthouse) Unit Plan

Penthouse - Upper Level Plan (4 BHK)



	MM	Feet-Inch
Master Bedroom	4430 x 4420	14'-6" x 15'-0"
Bedroom-1	3600 x 4280	14'-0" x 11'-10"
Bedroom-2	4880 x 3520	16'-0" x 11'-7"
Family Lounge	7605 x 4570	25'-0" x 15'-0"
Terrace-1	9215 x 2400	30'-0" x 7'-10"

	MM	Feet-Inch
Terrace-2	4865 x 2440	16'-0" x 8'-0"
Master Toilet	2485 x 4465	8'-2" x 14'-6"
Toilet-1	3045 x 1830	10'-0" x 6'-0"
Toilet-2	2195 x 2050	7'-2" x 6'-9"
Master Dress	2480 x 1420	8'-2" x 4'-8"

	MM	Feet-Inch
Dress-1	2970 x 1830	9'-8" x 6'-0"
Dress-2	1605 x 2935	5'-3" x 9'-8"
Lift	1600 x 1600	5'-3" x 5'-3"