

GODREJ ICON

SECTOR 88A, GURUGRAM

FLOOR PLAN



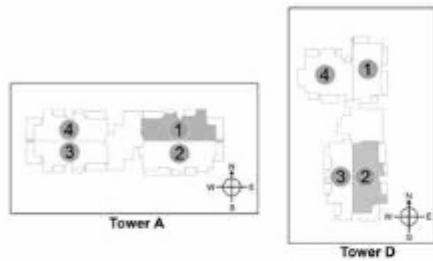
 +91 8586866824

CATEGORY : 2 BHK + STUDY

RERA carpet Area = 81.17 sq. metre

Balcony Area = 27.99 sq. metre

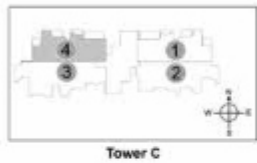
Total Area = 109.16 sq. metre



*1 sq.mt. = 10.764 sq.ft.

CATEGORY : 2 BHK + STUDY

Carpet Area = 81.38 Sq. metre
Balcony Area = 18.67 sq. metre
Total Area = 100.05 Sq. metre

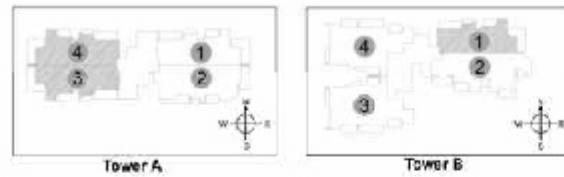


Tower C

*1 sq.mt. = 10.764 sq.ft.

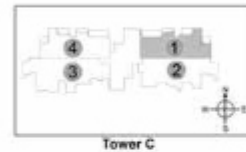
CATEGORY : 2 BHK + STUDY

Carpet Area = 80.67 Sq. metre
Balcony Area = 27.72 sq. metre
Total Area = 108.39 Sq. metre



CATEGORY : 2 BHK + STUDY

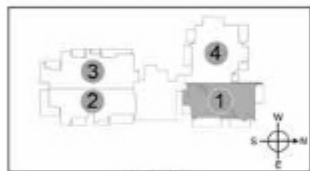
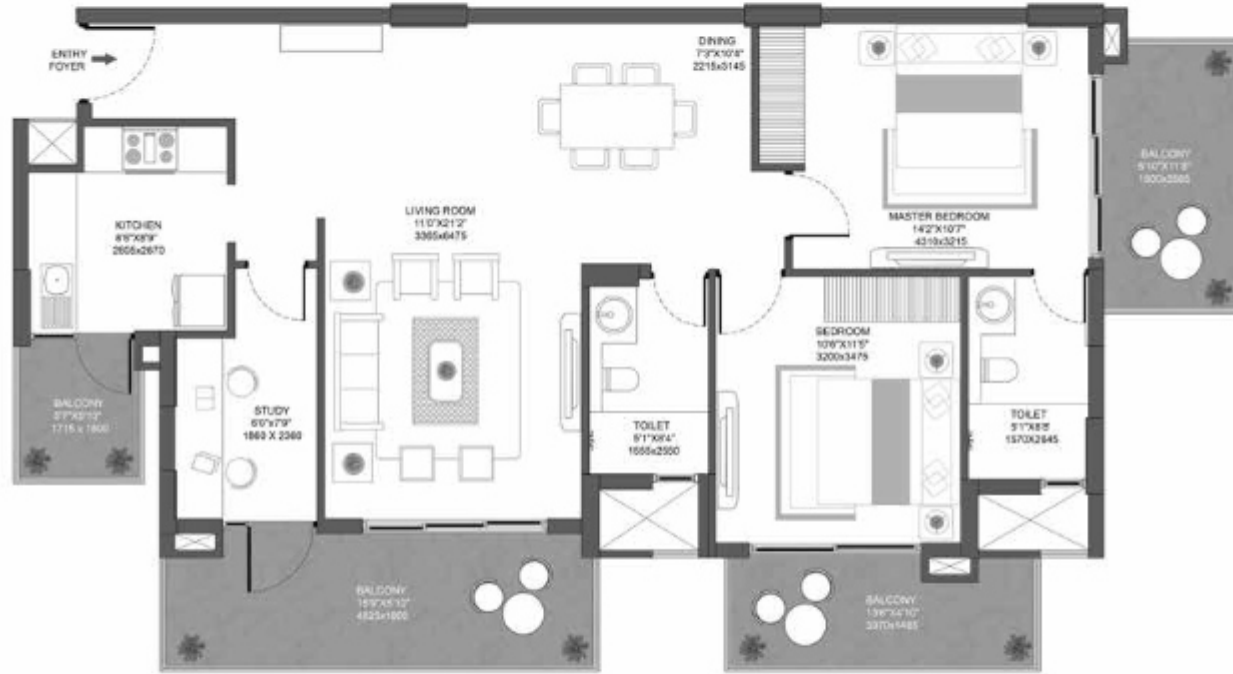
Carpet Area = 81.88 Sq. metre
Balcony Area = 18.94 sq. metre
Total Area = 100.82 Sq. metre



*1 sq.mt. = 10.764 sq.ft.

CATEGORY : 2 BHK + STUDY

Carpet Area = 82.18 Sq. metre
Balcony Area = 23.61 sq. metre
Total Area = 105.79 Sq. metre



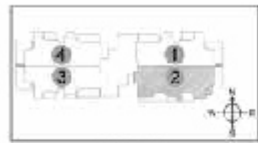
Tower D



*1 sq.mt. = 10.764 sq.ft.

CATEGORY : 3 BHK

Carpet Area = 99.53 Sq. metre
Balcony Area = 23.81 sq. metre
Total Area = 123.34 Sq. metre



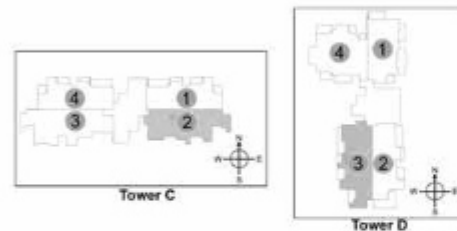
Tower A



*1 sq.mt. = 10.764 sq.ft.

CATEGORY : 3 BHK

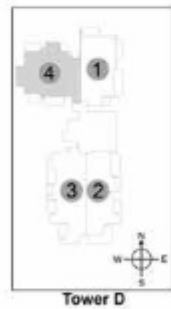
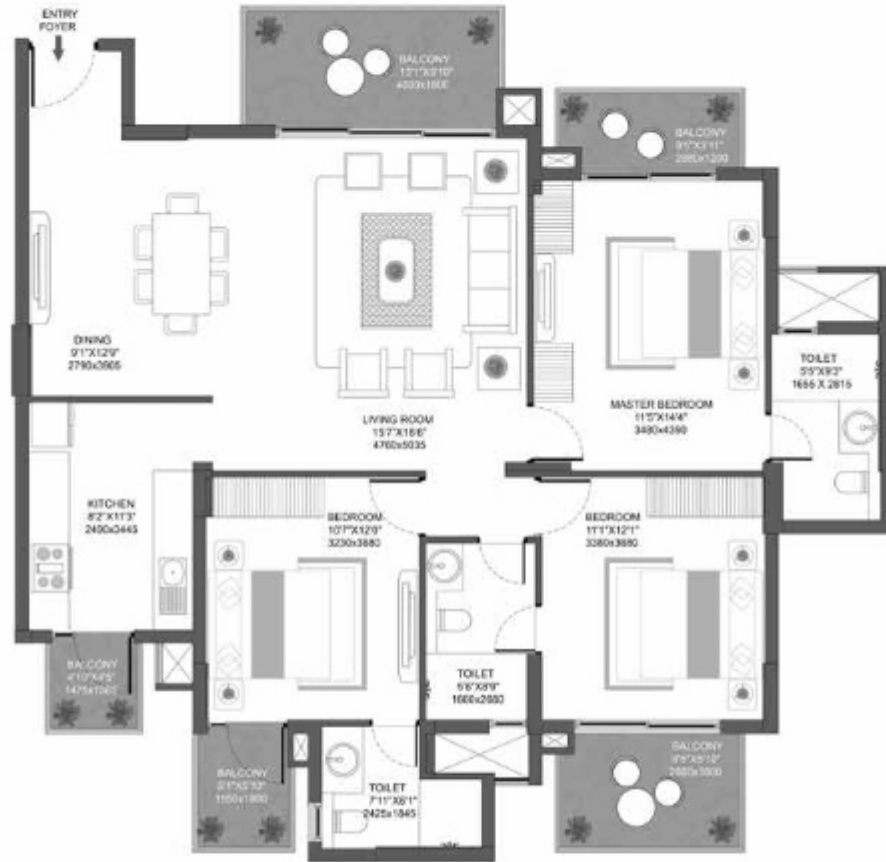
Carpet Area = 99.49 Sq. metre
Balcony Area = 19.94 sq. metre
Total Area = 119.43 Sq. metre



*1 sq.mt. = 10.764 sq.ft.

CATEGORY : 3 BHK

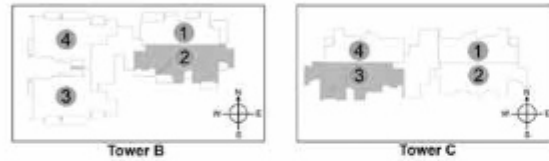
Carpet Area = 101.74 Sq. metre
Balcony Area = 20.29 sq. metre
Total Area = 122.03 Sq. metre



*1 sq.mt. = 10.764 sq.ft.

CATEGORY : 3 BHK + UTILITY

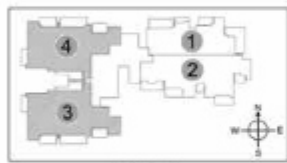
Carpet Area = 109.36 Sq. metre
Balcony Area = 25.21 sq. metre
Total Area = 134.57 Sq. metre



*1 sq.mt. = 10.764 sq.ft.

CATEGORY : 3 BHK + UTILITY

Carpet Area = 113.00 Sq. metre
Balcony Area = 30.54 sq. metre
Total Area = 143.54 Sq. metre



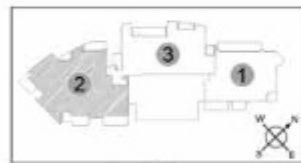
Tower B



*1 sq.mt. = 10.764 sq.ft.

4 BHK + STUDY + UTILITY

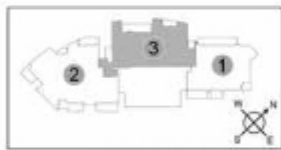
Carpet Area = 166.80 Sq. metre
Balcony Area = 35.82 sq. metre
Total Area = 202.62 Sq. metre



Iconic Tower

4 BHK + UTILITY

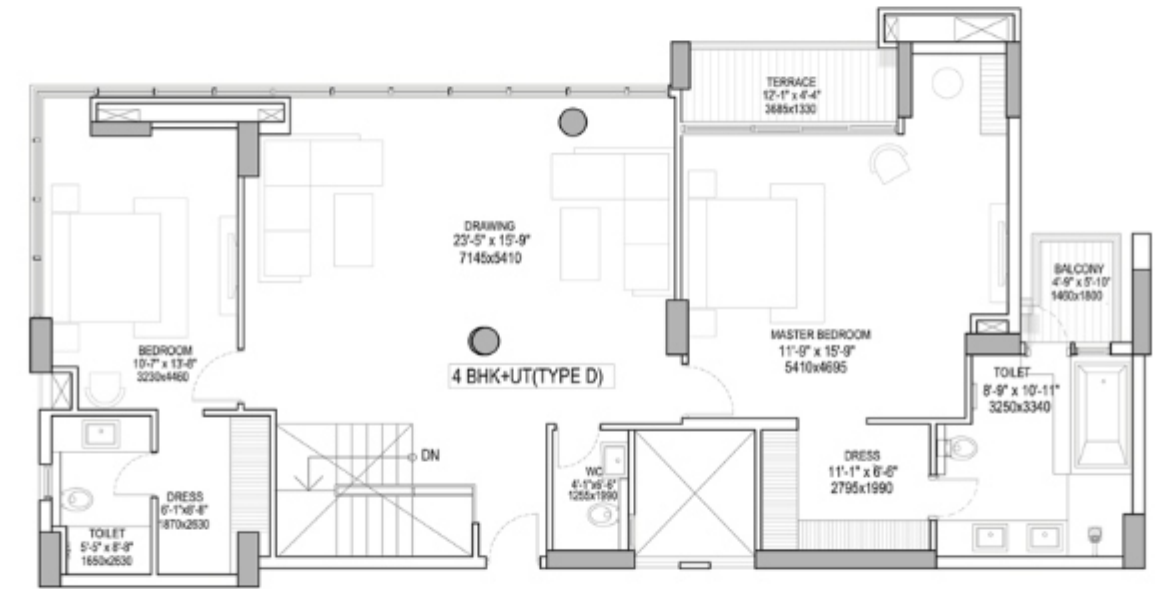
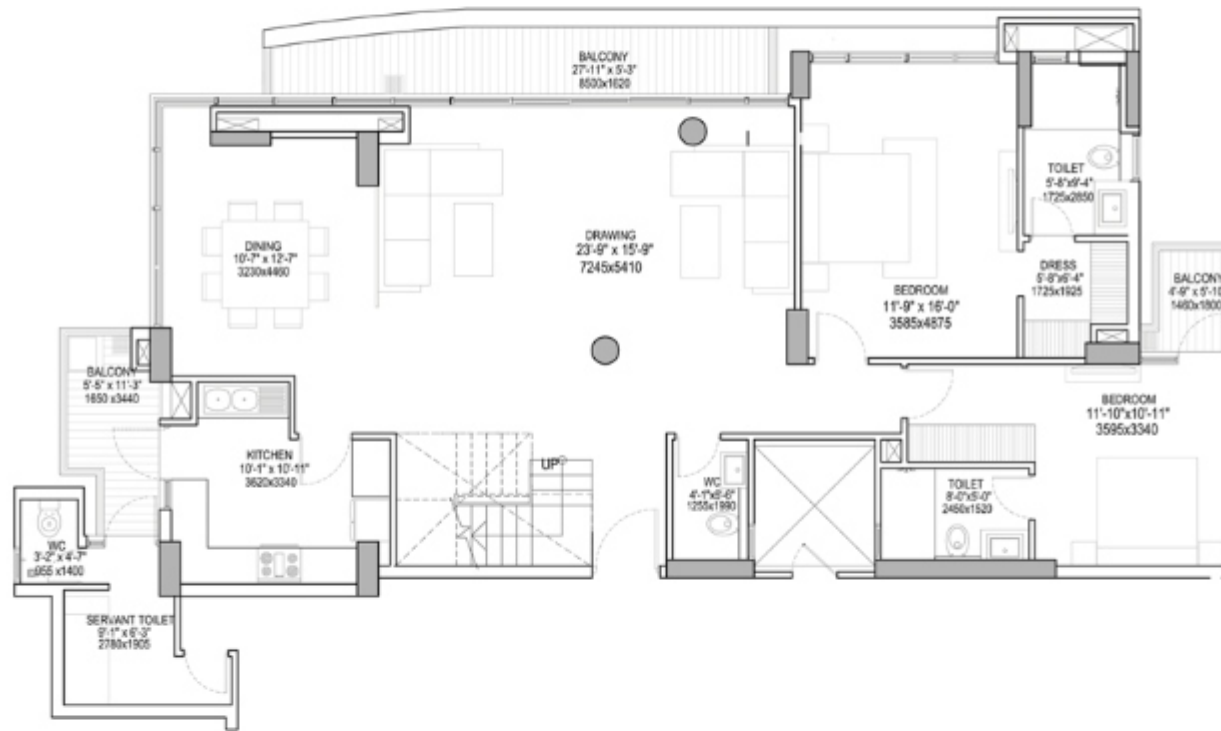
Carpet Area = 133.83 Sq. metre
Balcony Area = 23.00 sq. metre
Total Area = 156.83 Sq. metre



*1 sq.mt. = 10.764 sq.ft.

4 BHK + UTILITY (PENT HOUSE)

Carpet Area = 247.32 Sq. metre
Balcony Area = 23.84 sq. metre
Total Area = 271.16 Sq. metre



LOWER LEVEL PLAN

UPPER LEVEL PLAN

Thank You

 +91 8586866824

