

Floor Plan

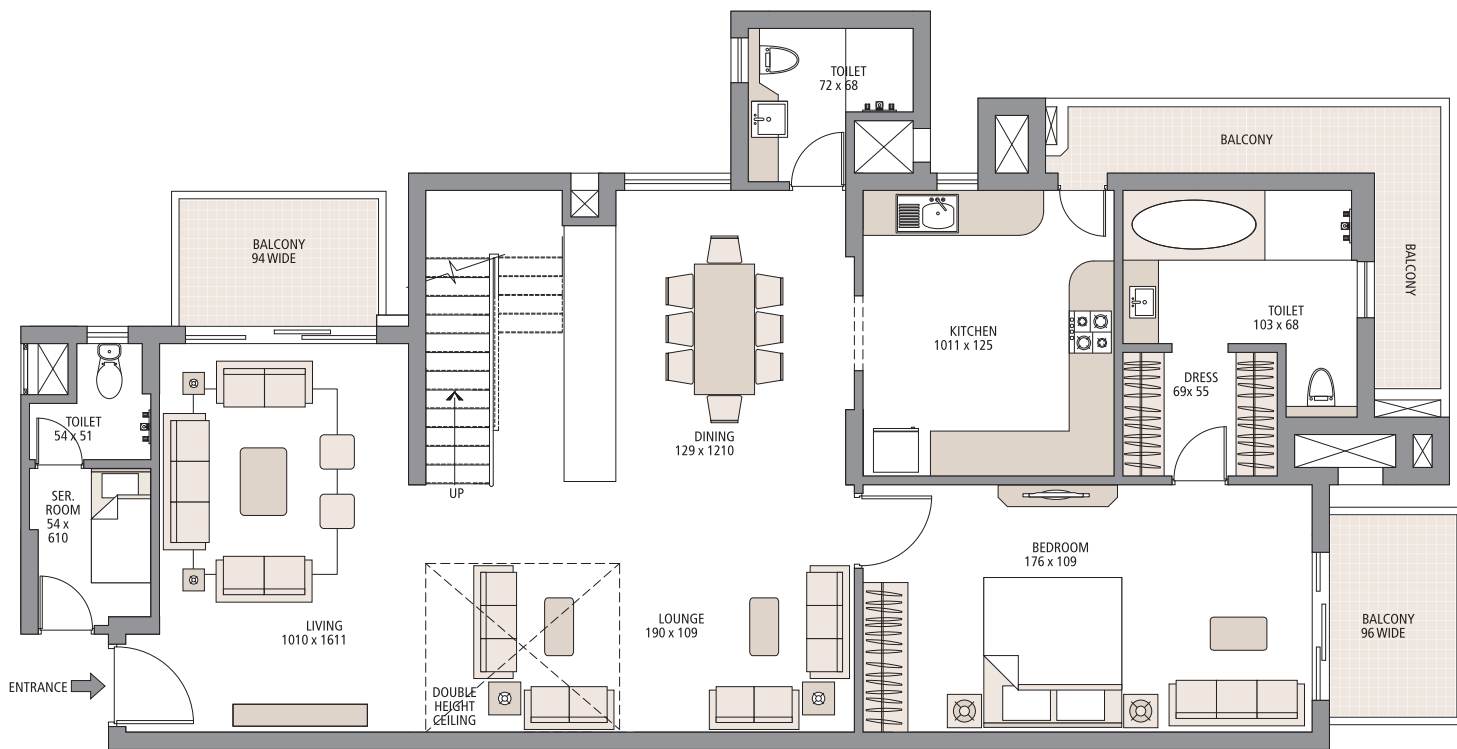
PENTHOUSE-DUPLEX APARTMENT LOWER LEVEL FLOOR PLAN TYPE A

5 Bedroom + 6 Bathroom + Lounge + S. Room

Saleable Area: 348 sq. mtr. (3,750 sq. ft.)

Carpet Area: 227 sq. mtr. (2,440 sq. ft.)

Balcony Area: 29 sq. mtr. (313 sq. ft.)



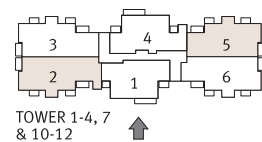
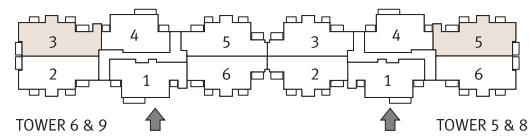
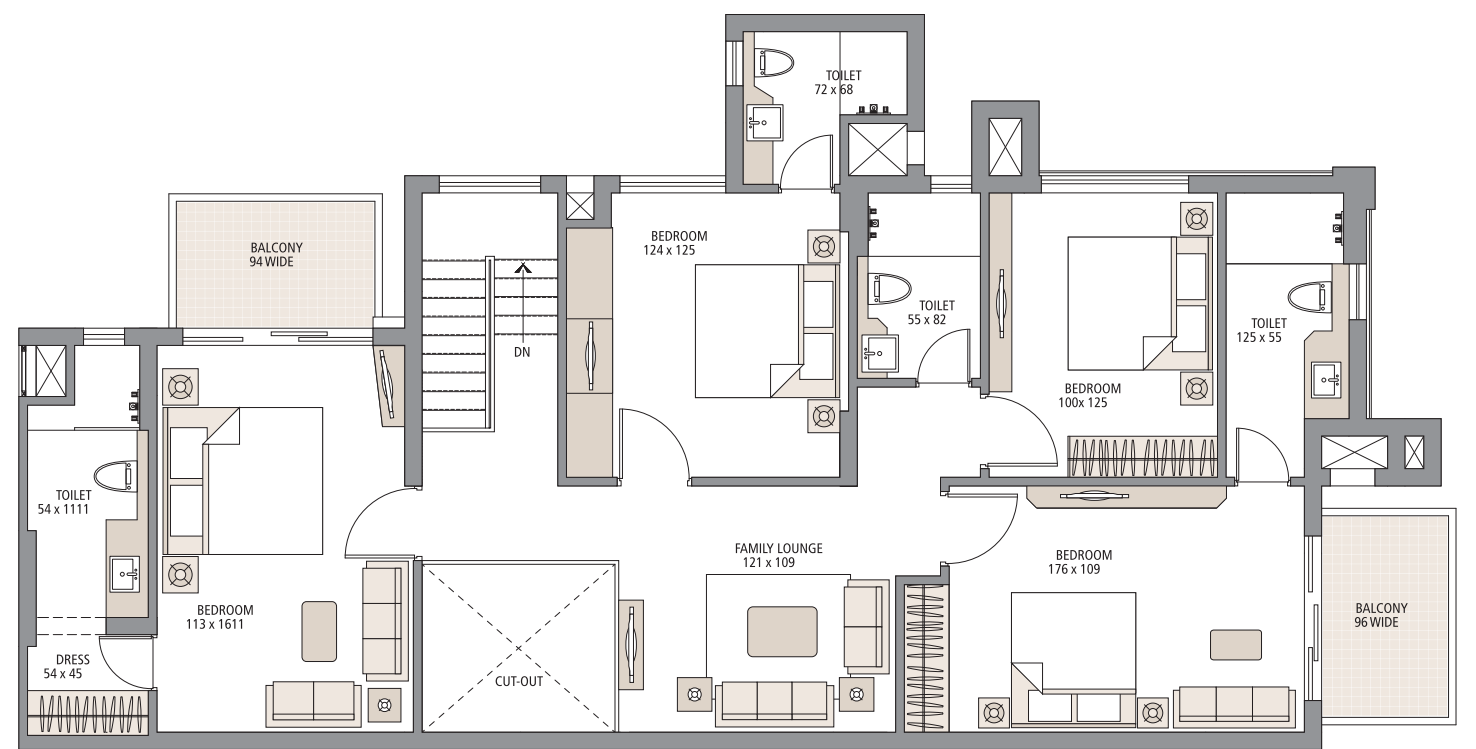
PENTHOUSE-DUPLEX APARTMENT UPPER LEVEL FLOOR PLAN TYPE A

5 Bedroom + 6 Bathroom + Lounge + S. Room

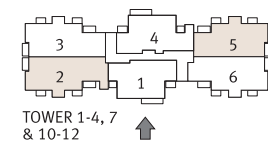
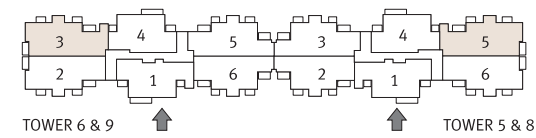
Saleable Area: 348 sq. mtr. (3,750 sq. ft.)

Carpet Area: 227 sq. mtr. (2,440 sq. ft.)

Balcony Area: 29 sq. mtr. (313 sq. ft.)



In the interest of maintaining high standard all plans, layout plans, areas, dimensions and specifications mentioned are indicative and are subject to change as decided by the company or by any competent authority. Soft furnishing, cupboards, kitchen cabinets, furniture and gadgets are not part of the offering. All dimensions are from Masonry to Masonry. 1 sq. mtr. = 1.196 sq. yds. & 1 sq. mtr. = 10.764 sq. ft.



In the interest of maintaining high standard all plans, layout plans, areas, dimensions and specifications mentioned are indicative and are subject to change as decided by the company or by any competent authority. Soft furnishing, cupboards, kitchen cabinets, furniture and gadgets are not part of the offering. All dimensions are from Masonry to Masonry. 1 sq. mtr. = 1.196 sq. yds. & 1 sq. mtr. = 10.764 sq. ft.

+918586866824

Floor Plan

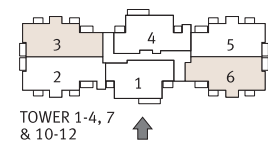
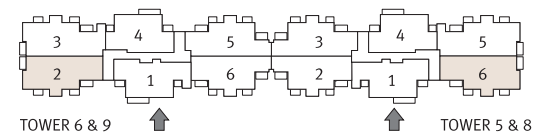
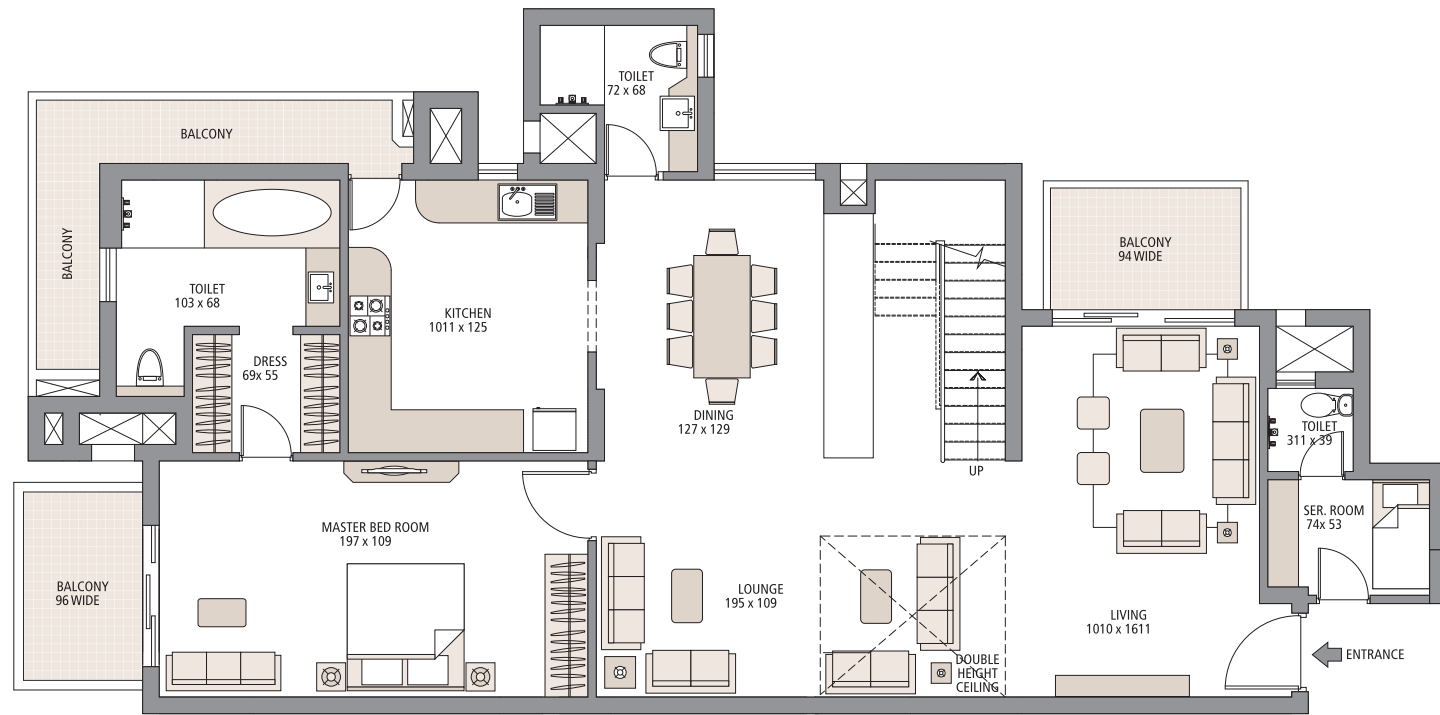
PENTHOUSE-DUPLEX APARTMENT LOWER LEVEL FLOOR PLAN TYPE B

5 Bedroom + 6 Bathroom + Lounge + S. Room

Saleable Area: 348 sq. mtr. (3,750 sq. ft.)

Carpet Area: 226 sq. mtr. (2,433 sq. ft.)

Balcony Area: 29 sq. mtr. (313 sq. ft.)



In the interest of maintaining high standard all plans, layout plans, areas, dimensions and specifications mentioned are indicative and are subject to change as decided by the company or by any competent authority. Soft furnishing, cupboards, kitchen cabinets, furniture and gadgets are not part of the offering. All dimensions are from Masonry to Masonry. 1 sq. mtr. = 1.196 sq. yds. & 1 sq. mtr. = 10.764 sq. ft.

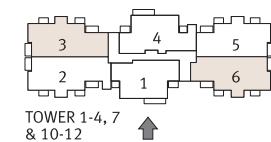
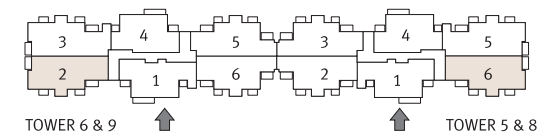
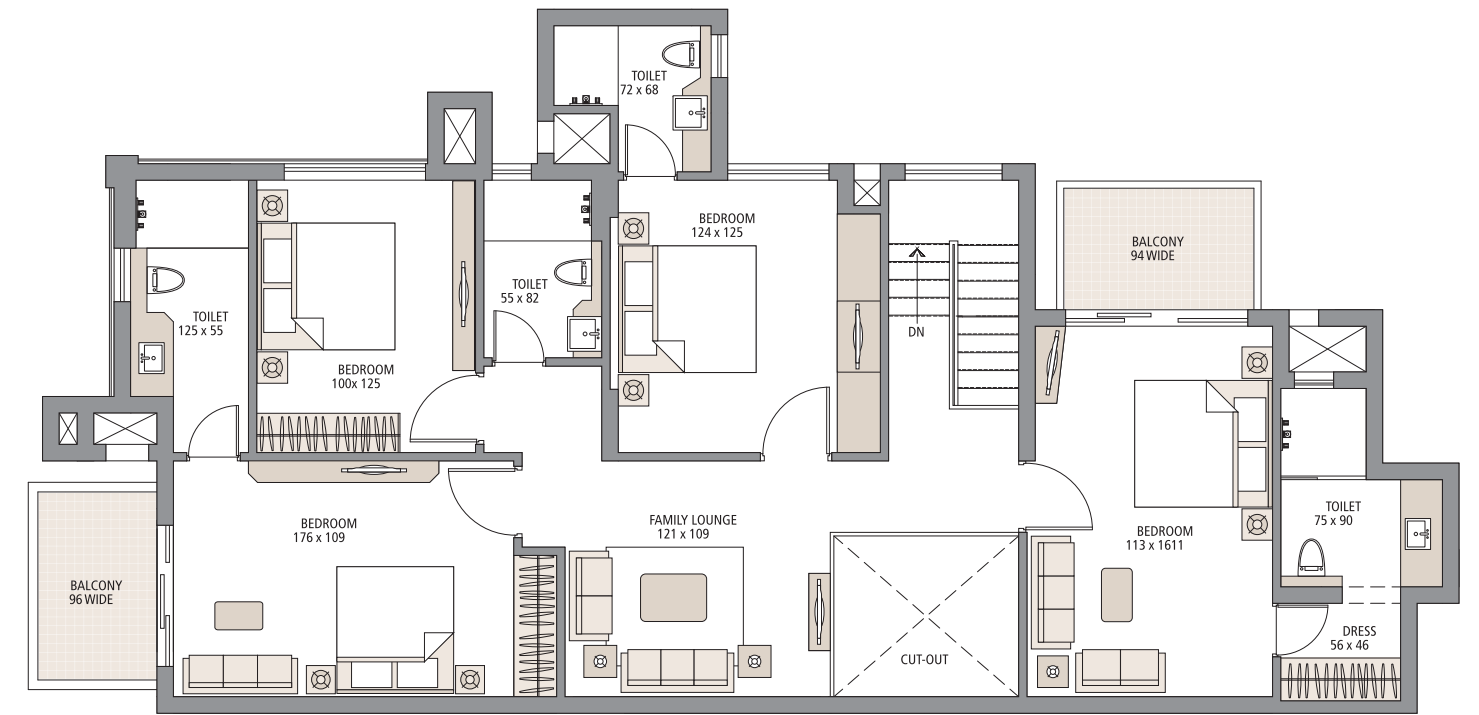
PENTHOUSE-DUPLEX APARTMENT UPPER LEVEL FLOOR PLAN TYPE B

5 Bedroom + 6 Bathroom + Lounge + S. Room

Saleable Area: 348 sq. mtr. (3,750 sq. ft.)

Carpet Area: 226 sq. mtr. (2,433 sq. ft.)

Balcony Area: 29 sq. mtr. (313 sq. ft.)



In the interest of maintaining high standard all plans, layout plans, areas, dimensions and specifications mentioned are indicative and are subject to change as decided by the company or by any competent authority. Soft furnishing, cupboards, kitchen cabinets, furniture and gadgets are not part of the offering. All dimensions are from Masonry to Masonry. 1 sq. mtr. = 1.196 sq. yds. & 1 sq. mtr. = 10.764 sq. ft.

+918586866824

Floor Plan

GROUND FLOOR DUPLEX APARTMENT GROUND LEVEL FLOOR PLAN TYPE 1A

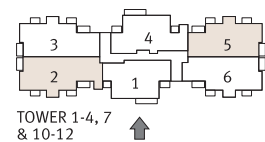
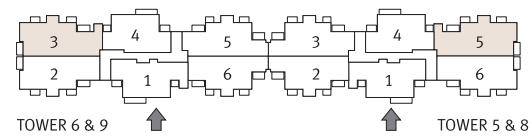
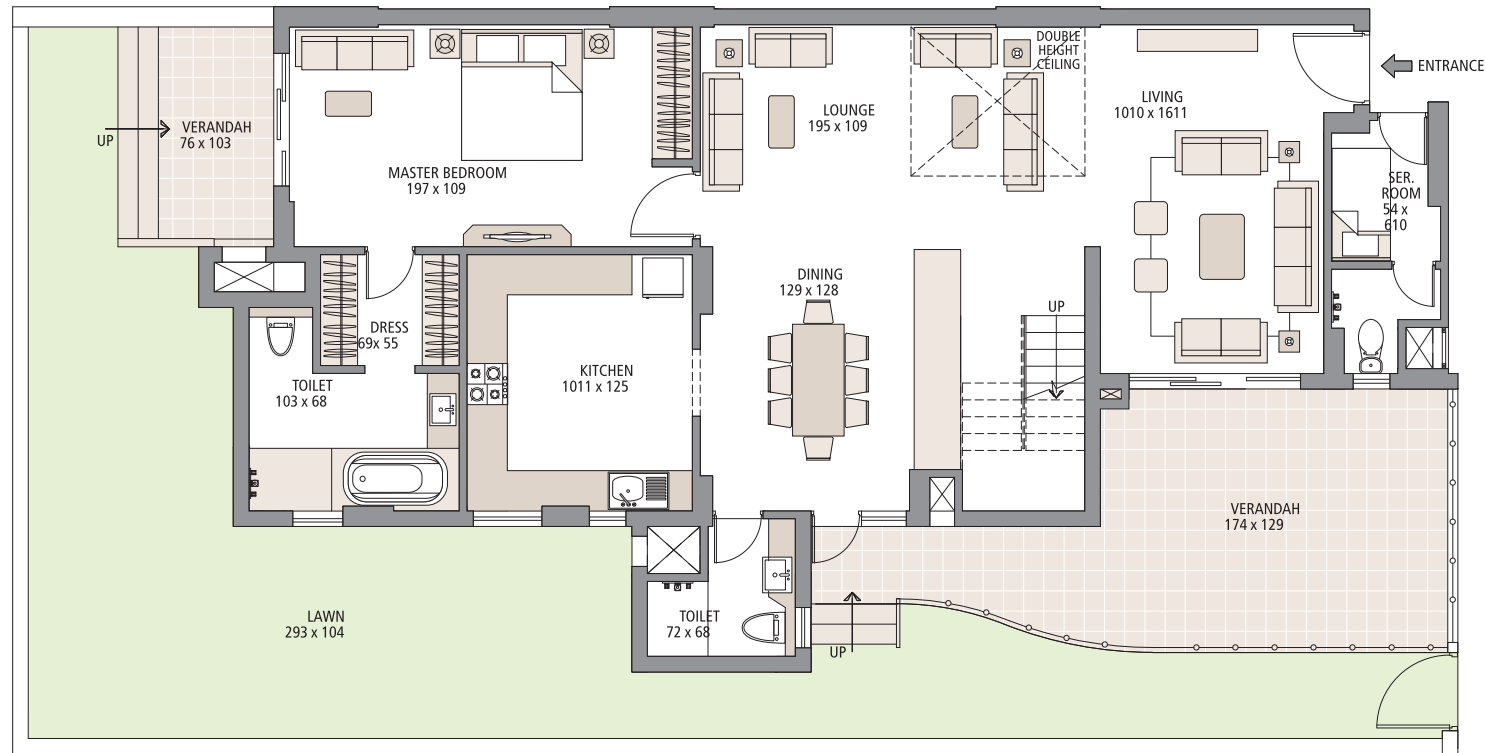
5 Bedroom + 6 Bathroom + Lounge + S. Room

Saleable Area: 348 sq. mtr. (3,750 sq. ft.)

Carpet Area: 226 sq. mtr. (2,437 sq. ft.)

Verandah Area: 32 sq. mtr. (347 sq. ft.)

Balcony Area: 16 sq. mtr. (177 sq. ft.)



In the interest of maintaining high standard floor plans, layout plans, areas, dimensions and specifications mentioned are indicative and are subject to change as decided by the company or by any competent authority. Soft furnishing, cupboards, kitchen cabinets, furniture and gadgets are not part of the offering. All dimensions are from Masonry to Masonry. 1 sq. mtr. = 1.196 sq. yds. & 1 sq. mtr. = 10.764 sq. ft.

GROUND FLOOR DUPLEX APARTMENT UPPER LEVEL FLOOR PLAN TYPE 1B

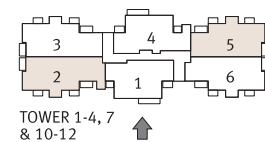
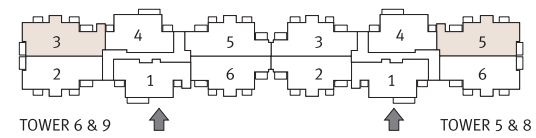
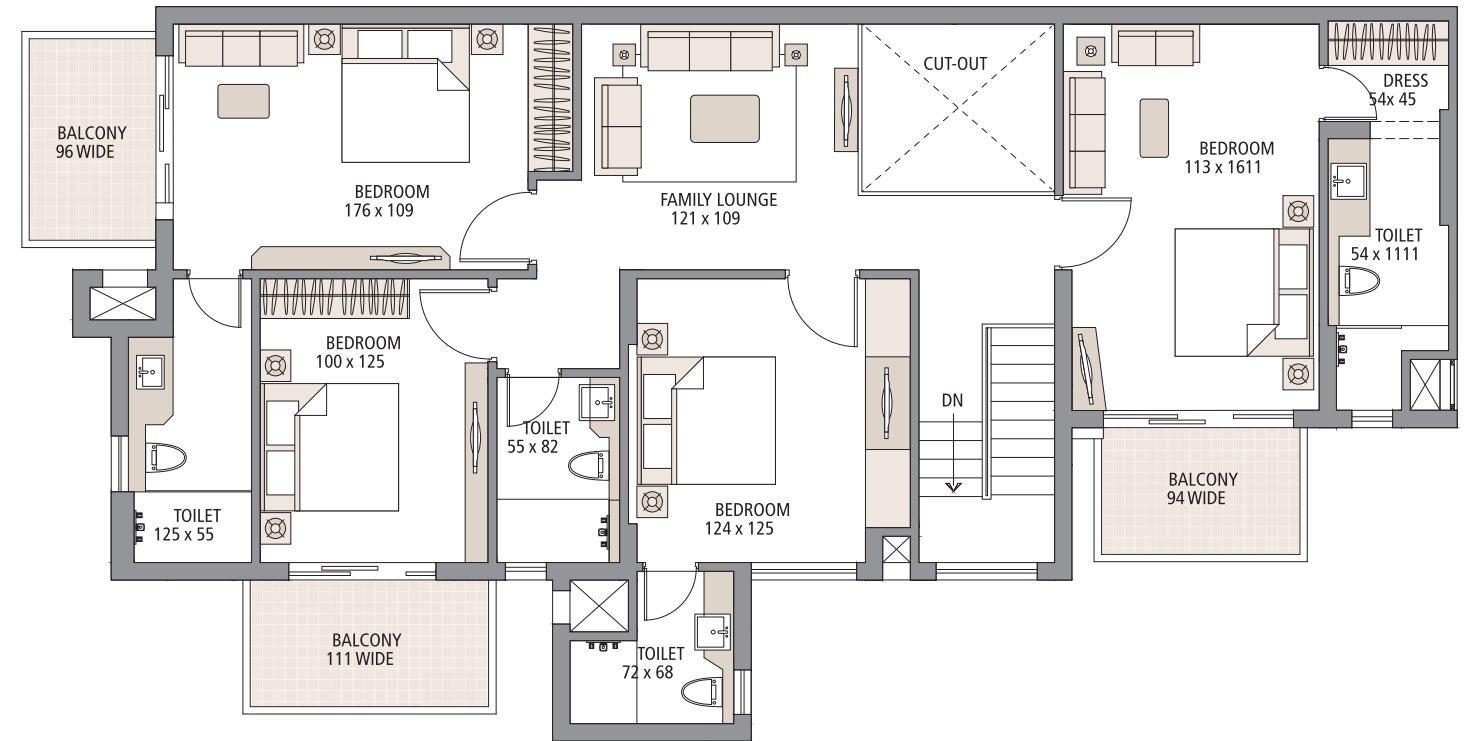
5 Bedroom + 6 Bathroom + Lounge + S. Room

Saleable Area: 348 sq. mtr. (3,750 sq. ft.)

Carpet Area: 226 sq. mtr. (2,437 sq. ft.)

Verandah Area: 32 sq. mtr. (347 sq. ft.)

Balcony Area: 16 sq. mtr. (177 sq. ft.)



In the interest of maintaining high standard floor plans, layout plans, areas, dimensions and specifications mentioned are indicative and are subject to change as decided by the company or by any competent authority. Soft furnishing, cupboards, kitchen cabinets, furniture and gadgets are not part of the offering. All dimensions are from Masonry to Masonry. 1 sq. mtr. = 1.196 sq. yds. & 1 sq. mtr. = 10.764 sq. ft.

+918586866824

Floor Plan

GROUND FLOOR DUPLEX APARTMENT GROUND LEVEL FLOOR PLAN TYPE 2A

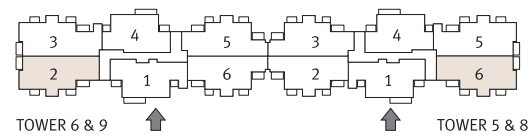
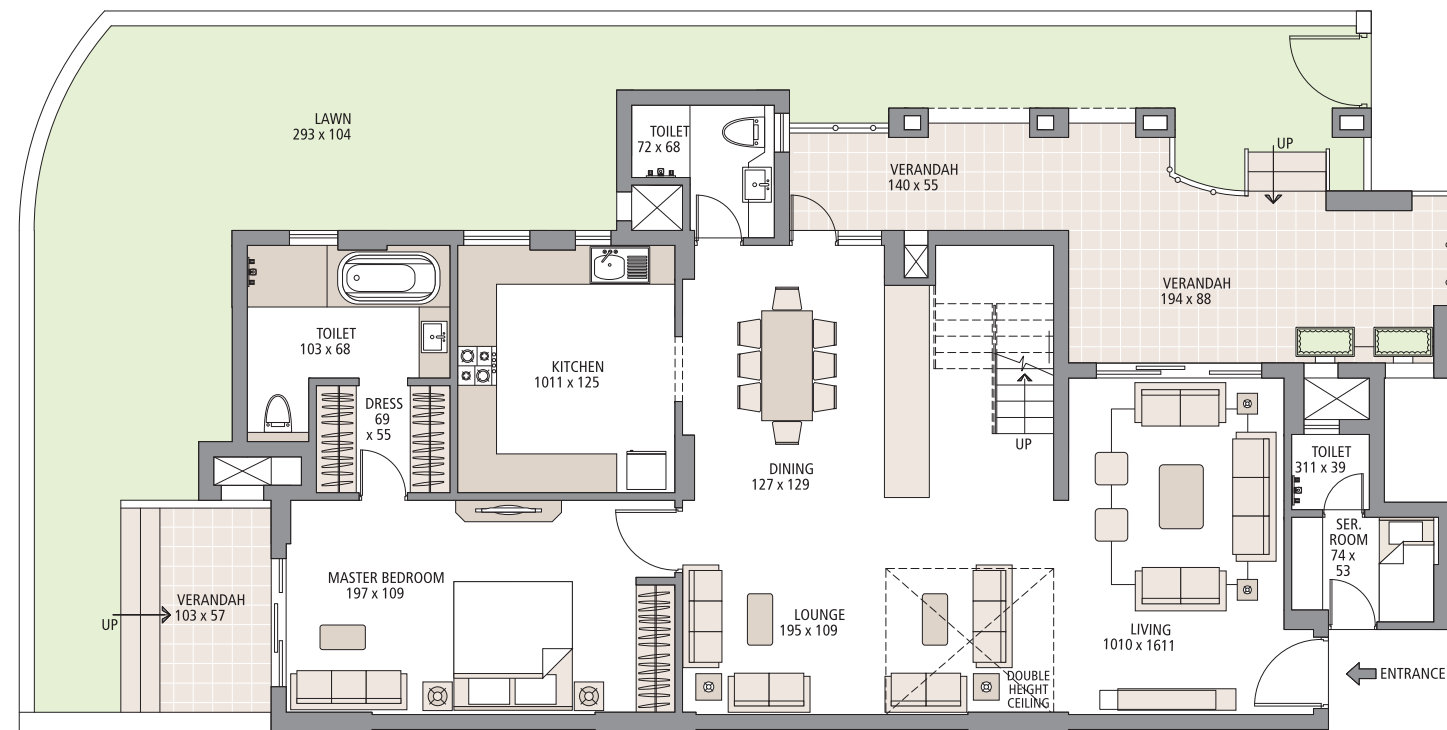
5 Bedroom + 6 Bathroom + Lounge + S. Room

Saleable Area: 348 sq. mtr. (3,750 sq. ft.)

Carpet Area: 226 sq. mtr. (2,437 sq. ft.)

Verandah Area: 32 sq. mtr. (314 sq. ft.)

Balcony Area: 16 sq. mtr. (177 sq. ft.)



In the interest of maintaining high standard all plans, layout plans, areas, dimensions and specifications mentioned are indicative and are subject to change as decided by the company or by any competent authority. Soft furnishing, cupboards, kitchen cabinets, furniture and gadgets are not part of the offering. All dimensions are from Masonry to Masonry. 1 sq. mtr. = 1.196 sq. yds. & 1 sq. mtr. = 10.764 sq. ft.

GROUND FLOOR DUPLEX APARTMENT UPPER LEVEL FLOOR PLAN TYPE 2B

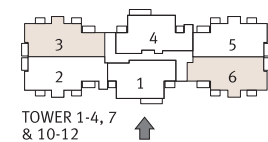
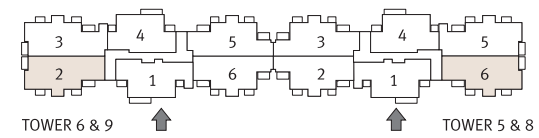
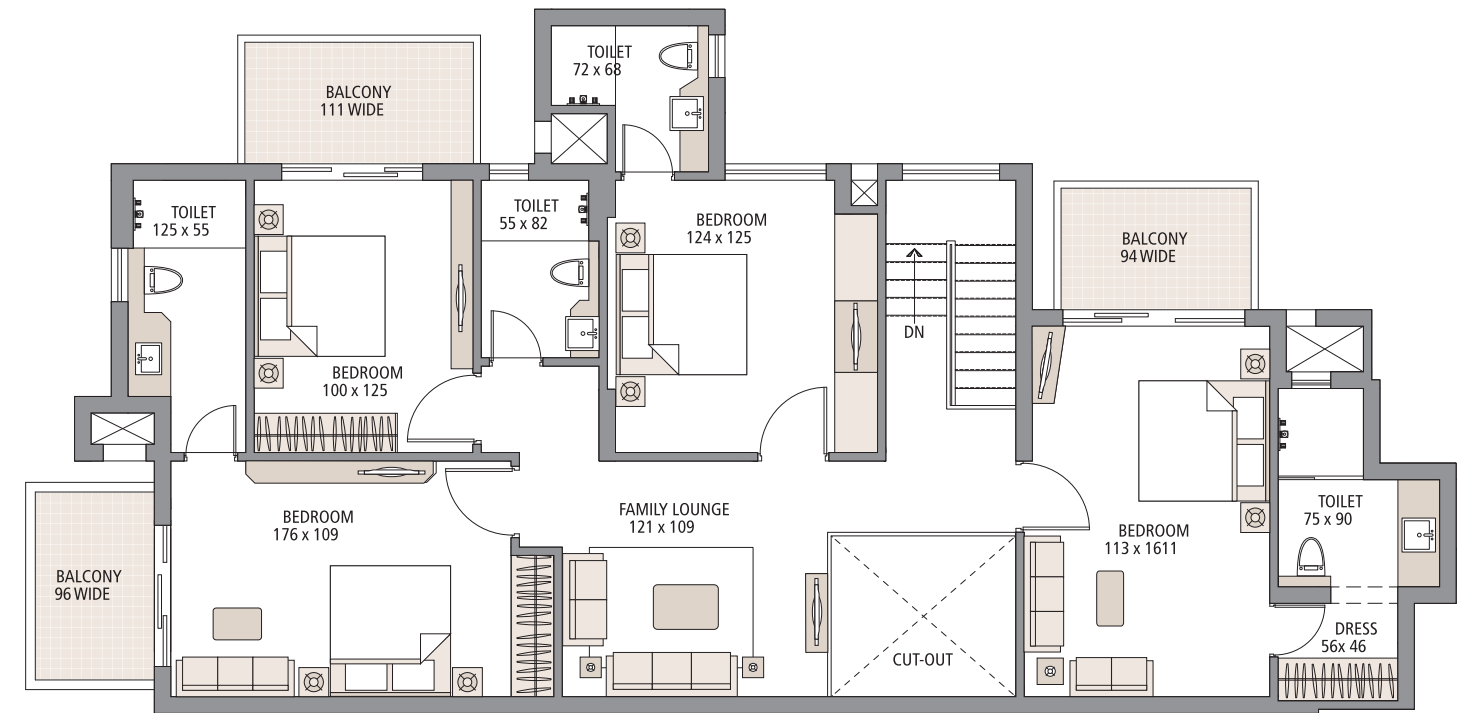
5 Bedroom + 6 Bathroom + Lounge + S. Room

Saleable Area: 348 sq. mtr. (3,750 sq. ft.)

Carpet Area: 226 sq. mtr. (2,434 sq. ft.)

Verandah Area: 32 sq. mtr. (314 sq. ft.)

Balcony Area: 16 sq. mtr. (177 sq. ft.)



In the interest of maintaining high standard all plans, layout plans, areas, dimensions and specifications mentioned are indicative and are subject to change as decided by the company or by any competent authority. Soft furnishing, cupboards, kitchen cabinets, furniture and gadgets are not part of the offering. All dimensions are from Masonry to Masonry. 1 sq. mtr. = 1.196 sq. yds. & 1 sq. mtr. = 10.764 sq. ft.

+918586866824

Floor Plan

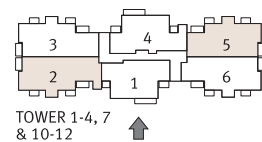
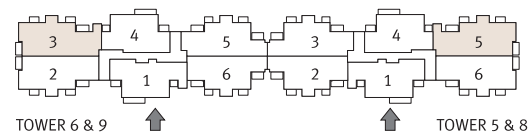
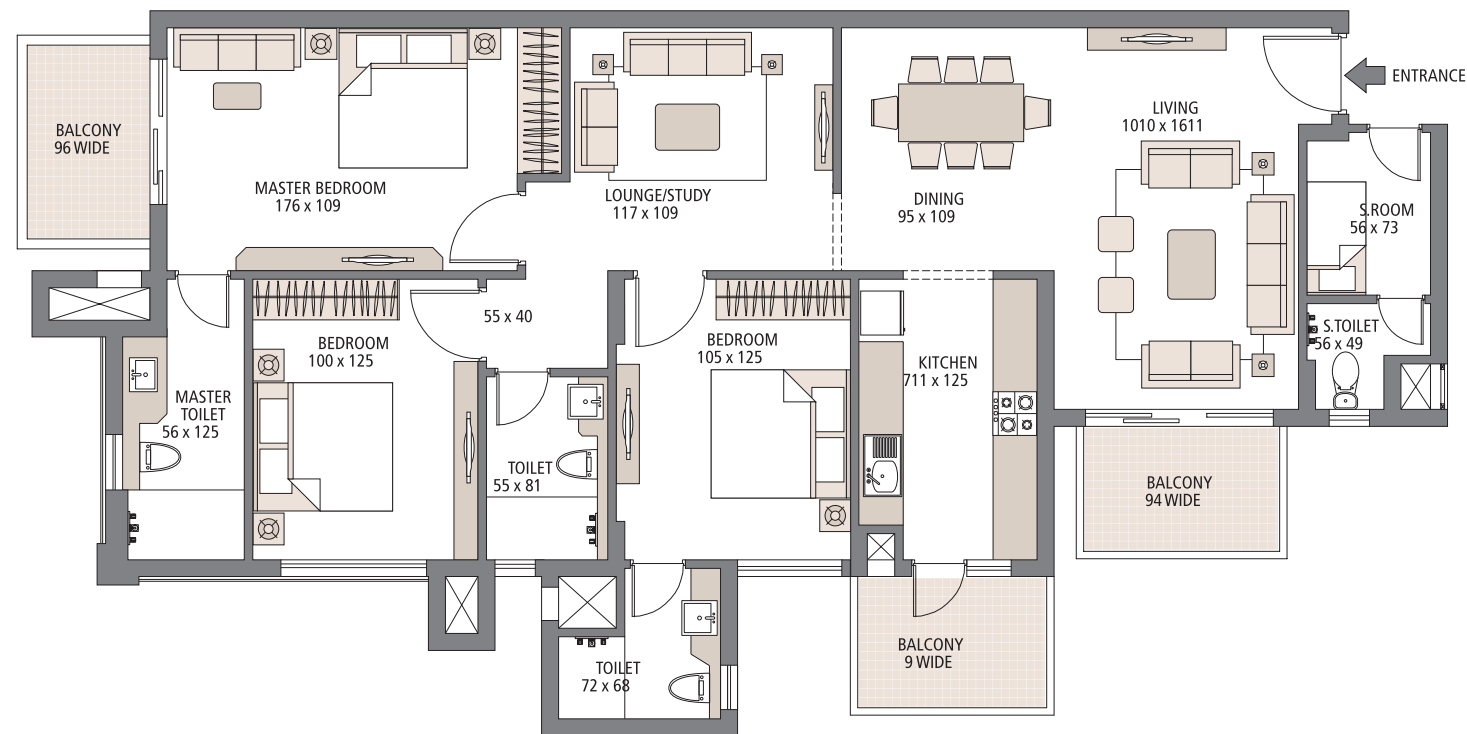
TYPICAL FLOOR PLAN - TYPE 1E

3 Bedroom + 3 Bathroom + Lounge + S. Room

Saleable Area: 177sq. mtr. (1,900 sq. ft.)

Carpet Area: 116 sq. mtr. (1,248 sq. ft.)

Balcony Area: 16 sq. mtr. (168 sq. ft.)



In the interest of maintaining high standard floor plans, layout plans, areas, dimensions and specifications mentioned are indicative and are subject to change as decided by the company or by any competent authority. Soft furnishing, cupboards, kitchen cabinets, furniture and gadgets are not part of the offering. All dimensions are from Masonry to Masonry. 1 sq. mtr. = 1.196 sq. yds. & 1 sq. mtr. = 10.764 sq. ft.

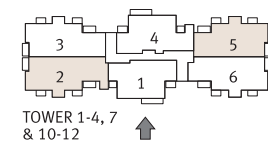
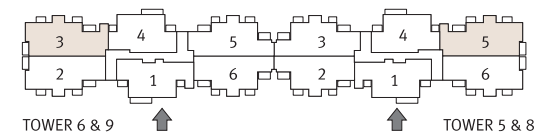
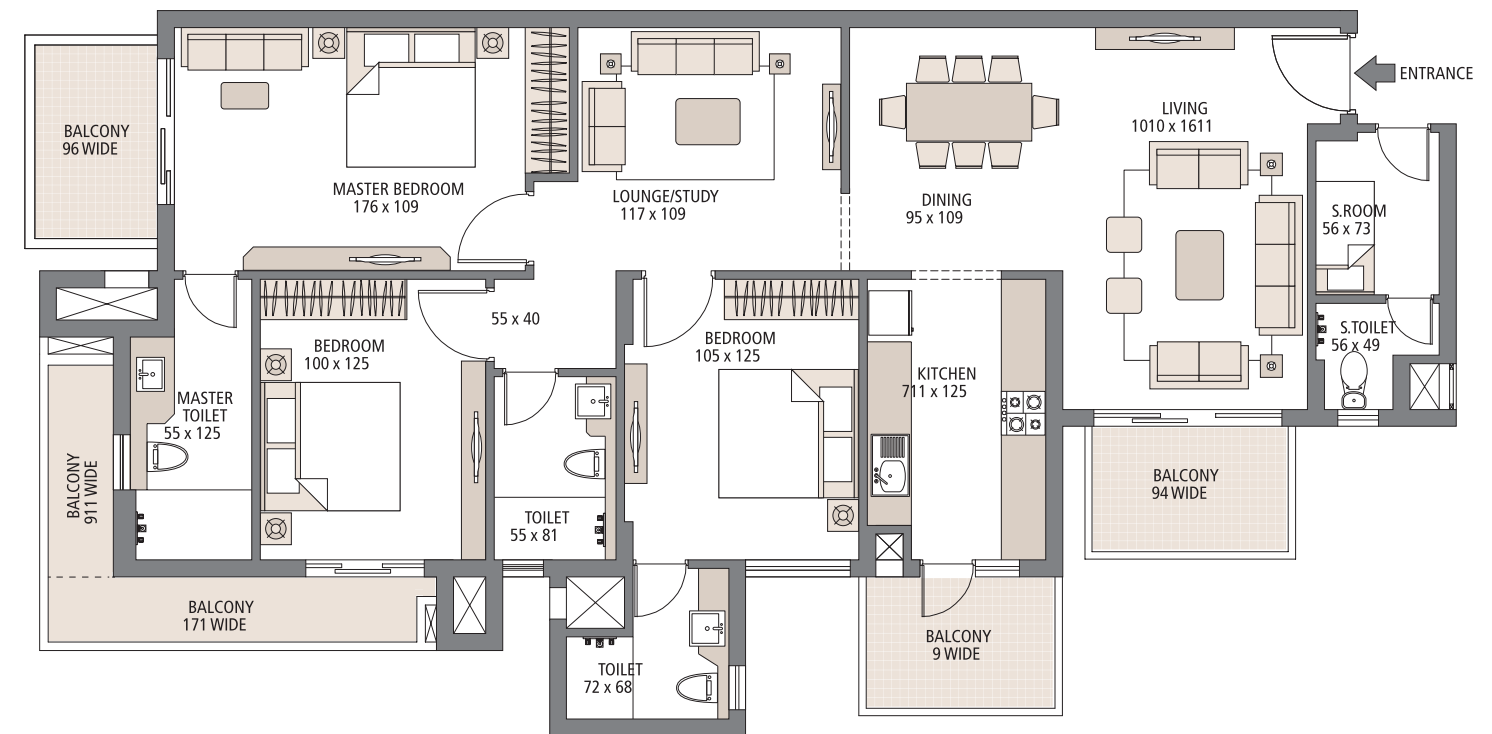
TYPICAL FLOOR PLAN - TYPE 1F

3 Bedroom + 3 Toilet + Lounge + S. Room

Saleable Area: 181 sq. mtr. (1,950 sq. ft.)

Carpet Area: 116 sq. mtr. (1,248 sq. ft.)

Balcony Area: 24 sq. mtr. (257 sq. ft.)



In the interest of maintaining high standard floor plans, layout plans, areas, dimensions and specifications mentioned are indicative and are subject to change as decided by the company or by any competent authority. Soft furnishing, cupboards, kitchen cabinets, furniture and gadgets are not part of the offering. All dimensions are from Masonry to Masonry. 1 sq. mtr. = 1.196 sq. yds. & 1 sq. mtr. = 10.764 sq. ft.

+918586866824

Floor Plan

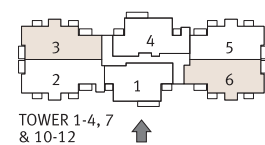
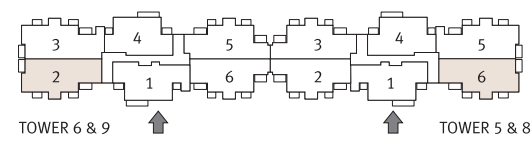
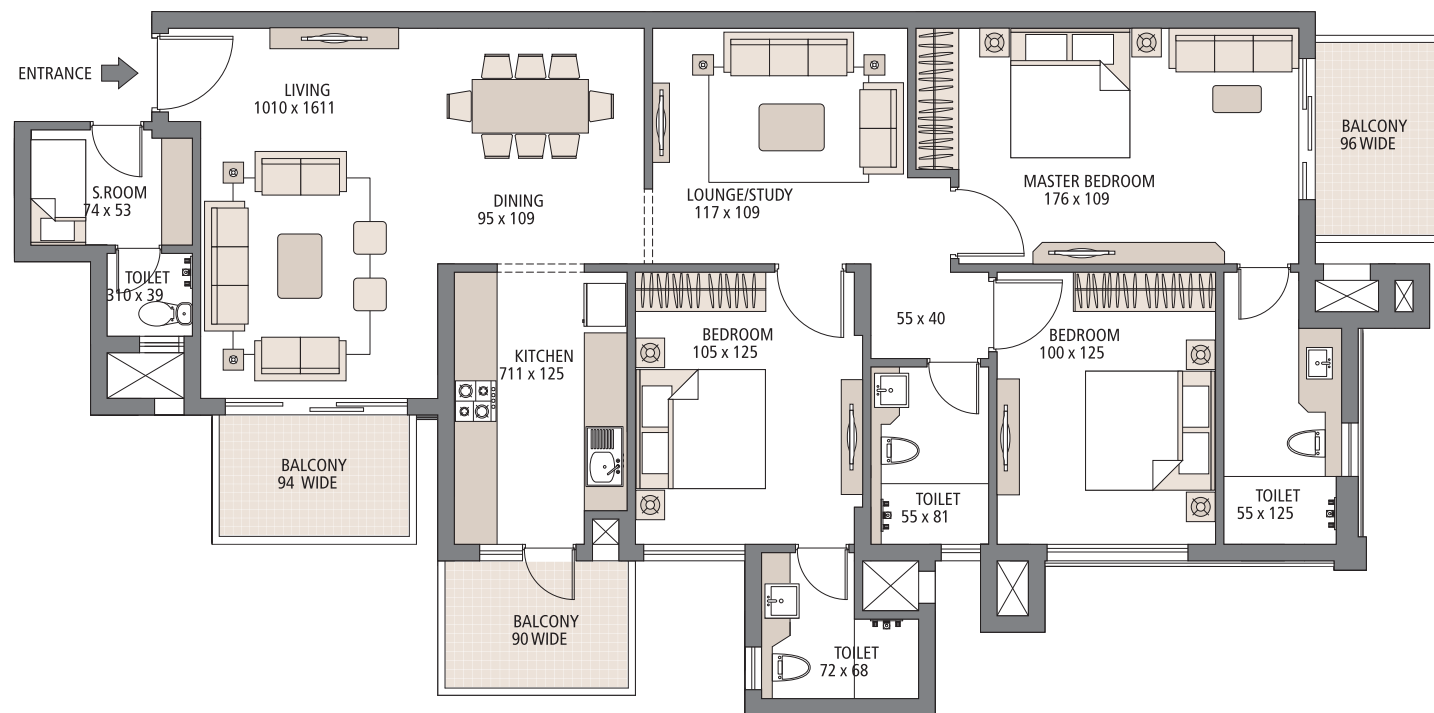
TYPICAL FLOOR PLAN - TYPE 1G

3 Bedroom + 3 Toilet + Lounge + S. Room

Saleable Area: 177sq. mtr. (1,900 sq. ft.)

Carpet Area: 115 sq. mtr. (1,240 sq. ft.)

Balcony Area: 16 sq. mtr. (168 sq. ft.)



In the interest of maintaining high standard floor plans, layout plans, areas, dimensions and specifications mentioned are indicative and are subject to change as decided by the company or by any competent authority. Soft furnishing, cupboards, kitchen cabinets, furniture and gadgets are not part of the offering. All dimensions are from Masonry to Masonry. 1 sq. mtr. = 1.196 sq. yds. & 1 sq. mtr. = 10.764 sq. ft.

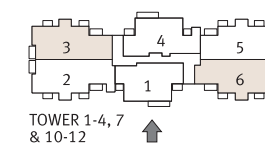
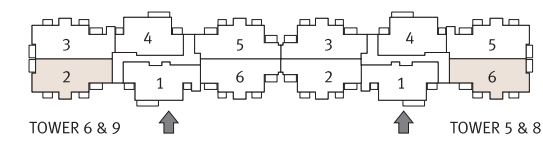
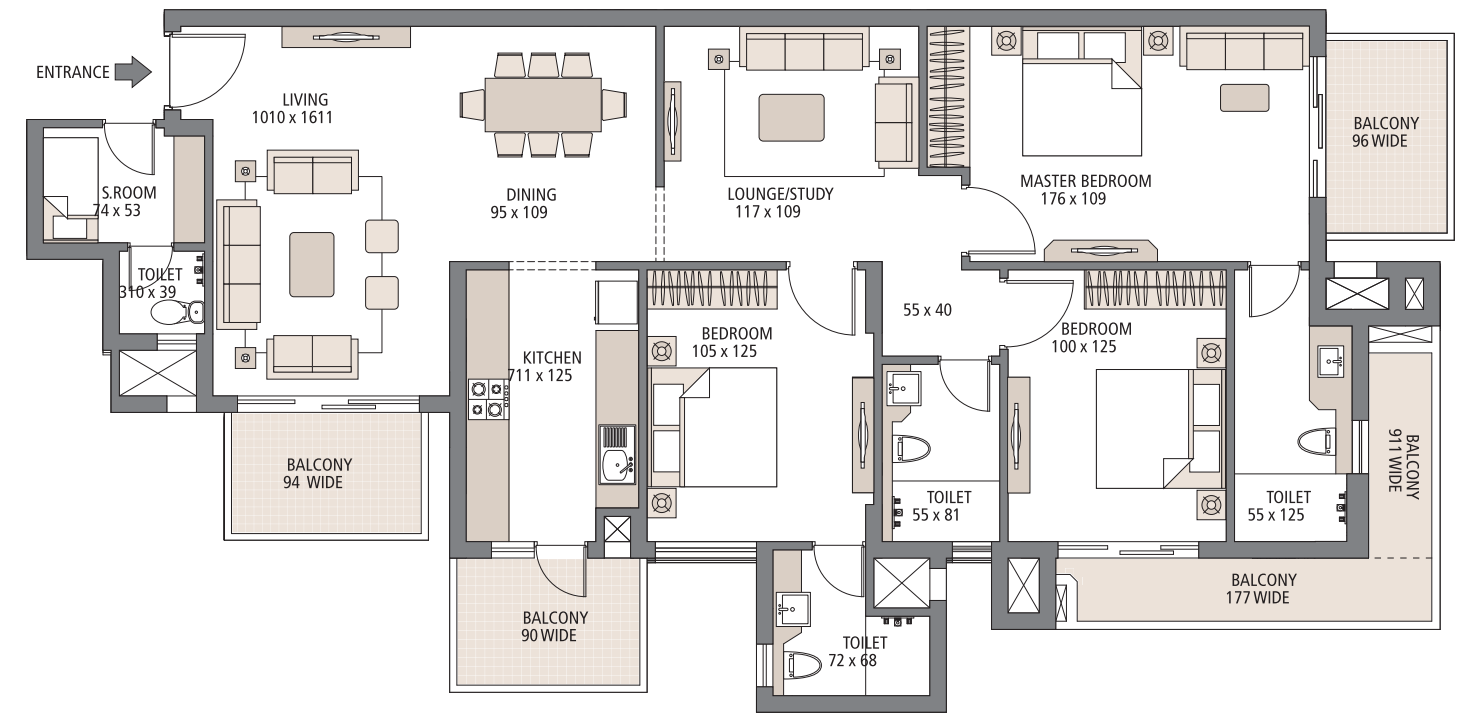
TYPICAL FLOOR PLAN - TYPE 1H

3 Bedroom + 3 Bathroom + Lounge + S. Room

Saleable Area: 181 sq. mtr. (1,950 sq. ft.)

Carpet Area: 115 sq. mtr. (1,240 sq. ft.)

Balcony Area: 24 sq. mtr. (257 sq. ft.)



In the interest of maintaining high standard floor plans, layout plans, areas, dimensions and specifications mentioned are indicative and are subject to change as decided by the company or by any competent authority. Soft furnishing, cupboards, kitchen cabinets, furniture and gadgets are not part of the offering. All dimensions are from Masonry to Masonry. 1 sq. mtr. = 1.196 sq. yds. & 1 sq. mtr. = 10.764 sq. ft.

+918586866824

Floor Plan

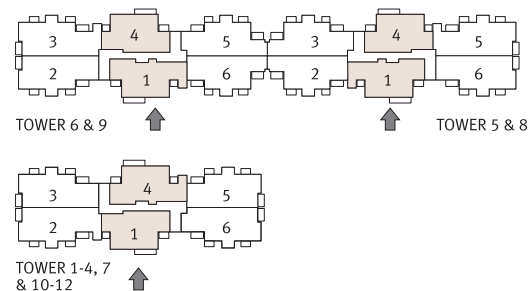
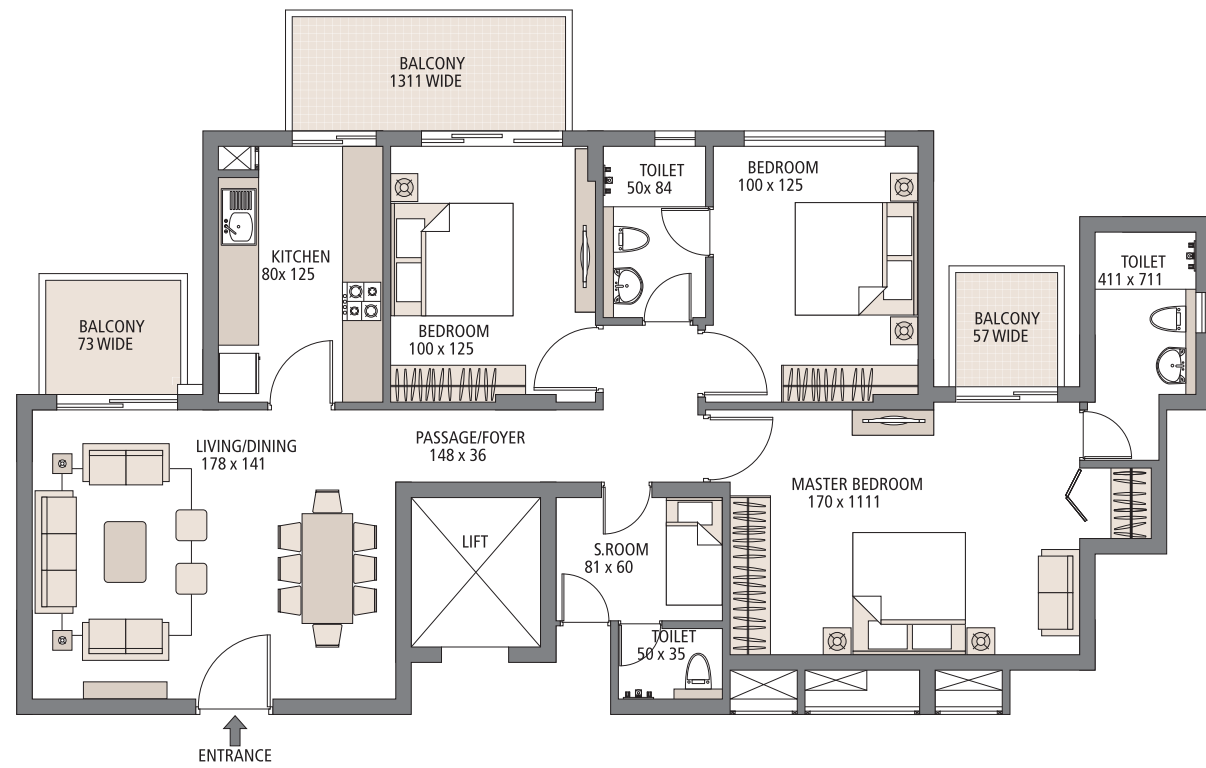
TYPICAL FLOOR PLAN - TYPE 2

3 Bedroom + 2 Toilet + S. Room

Saleable Area: 160 sq. mtr. (1,720 sq. ft.)

Carpet Area: 102 sq. mtr. (1,096 sq. ft.)

Balcony Area: 15 sq. mtr. (159 sq. ft.)



+918586866824

In the interest of maintaining high standards, all plans, layout plans, areas, dimensions and specifications mentioned are indicative and are subject to change as decided by the company or by any competent authority. Soft furnishing, cupboards, kitchen cabinets, furniture and gadgets are not part of the offering. All dimensions are from Masonry to Masonry. 1 sq. mtr. = 1.196 sq. yds. & 1 sq. mtr. = 10.764 sq. ft.

Project Update

Moving at a swift pace to deliver promises we made.

