

FLOOR PLAN

GODREJ NEST

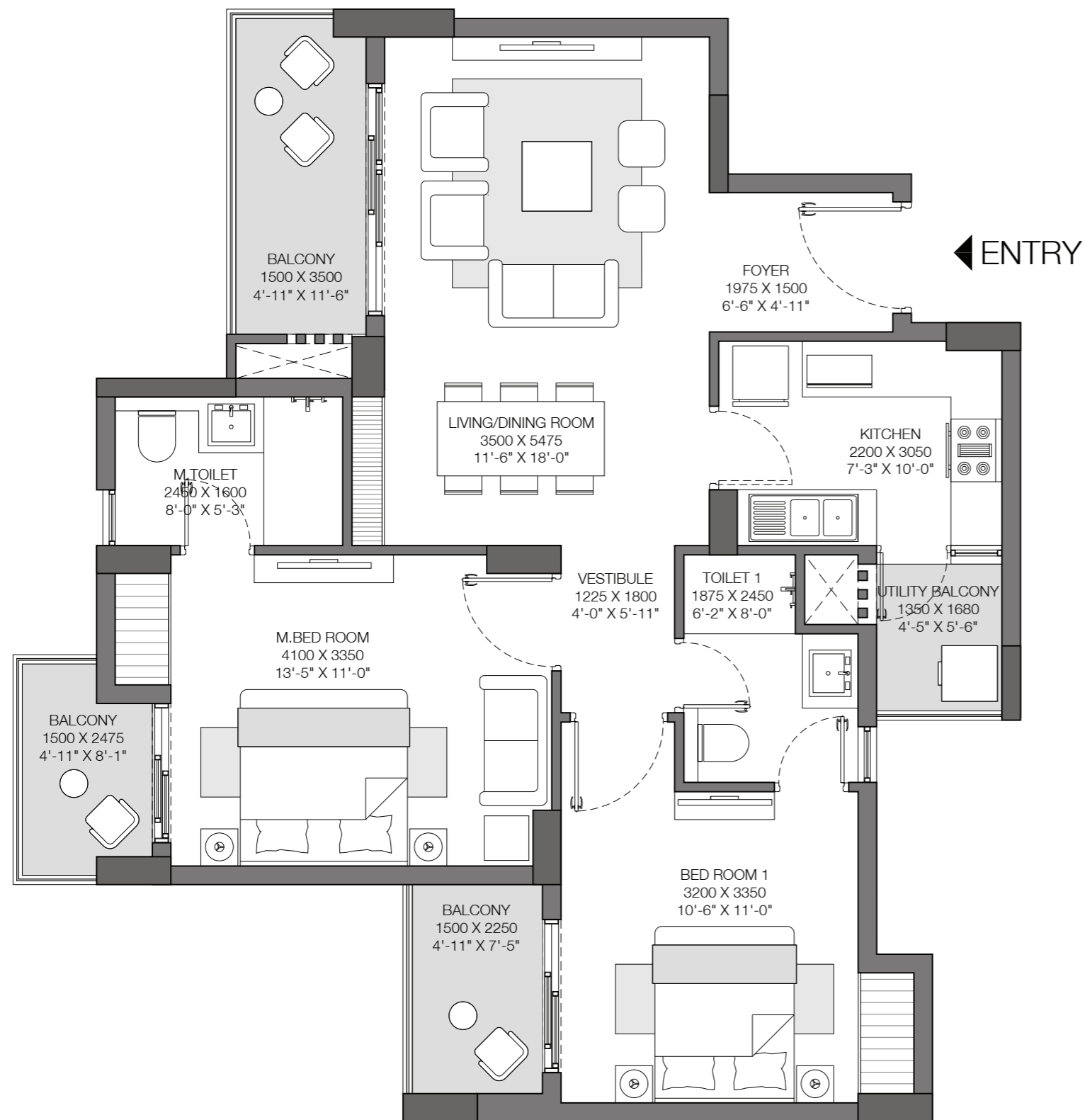
SECTOR 150, NOIDA

 +91 8586866824

GODREJ NEST has been registered with Uttar Pradesh RERA Authority in two phases. Godrej Nest Phase -1 UPRERAPRJ13521 and Godrej Nest Phase-2 UPRERAPRJ14252; website- <http://up-rera.in>
The two towers situated in Godrej Nest Phase-2 are being marketed as "Solitaire" and have been approved as Tower B1 and B2 in the sanctioned building plan dated 30.09.2016 bearing No. IV-1490/929

GODREJ NEST

SECTOR 150, NOIDA



Tower A1: Unit 1 & 4

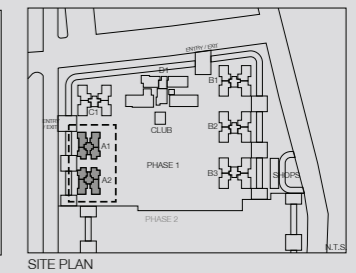
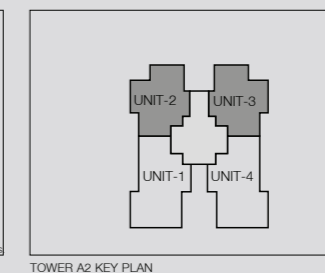
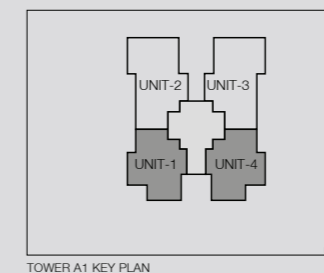
Towe A2: Unit 2 & 3

2 BHK

Unit Carpet Area: 69 SQ.M.

Exclusive Area: 14 SQ.M.

Total Area: 83 SQ.M.

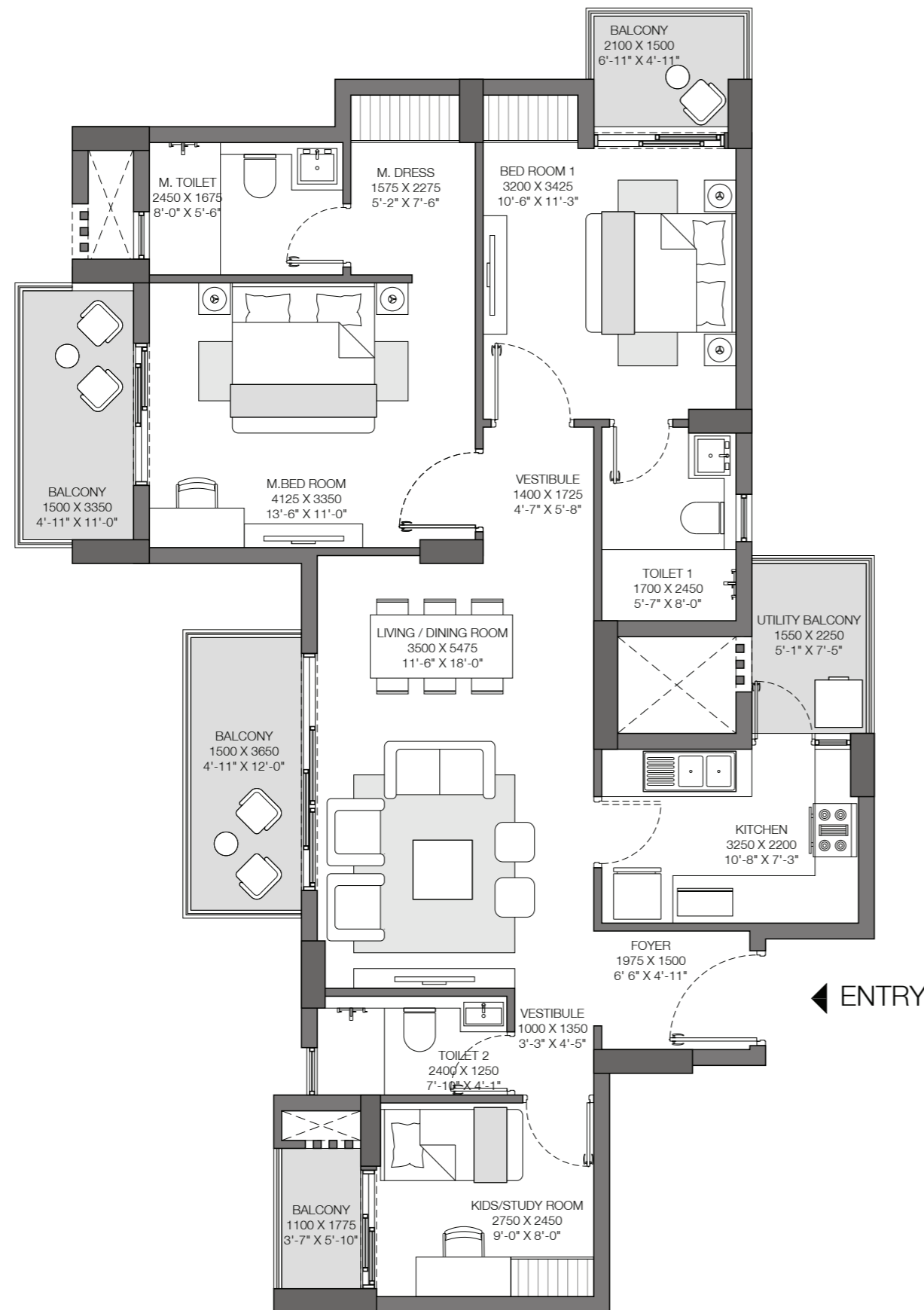


This is not an offer, an invitation to offer and/or commitment of any nature. This contains artistic impressions and no warranty is expressly or impliedly given that the completed development will comply in any degree with such artist's impression as depicted. The furniture, accessories, paintings, items, electronic goods, additional fittings/fixtures, decorative items, false ceiling including finishing materials, specifications, shades, sizes and colour of the tiles, etc. shown in the image are only indicative in nature and are only for the purpose of illustrating/indicating a conceived layout and do not form part of the standard specifications/amenities/services to be provided in the unit. All specifications of the unit shall be as per the final agreement between the Parties.

The present project is being developed by Brick Rise Developers Pvt. Ltd. (A subsidiary of Lotus Greens Constructions Pvt. Ltd.) who has appointed Godrej Properties Limited as the Development Manager for the same. IndusInd Bank Ltd. has sanctioned the construction finance for the present Project. The RERA registration number for this project is: GODREJ NEST Phase 1 UPRERAPRJ13521 on website- <http://up-rera.in>

GODREJ NEST

SECTOR 150, NOIDA



Tower A1: Unit 2 & 3

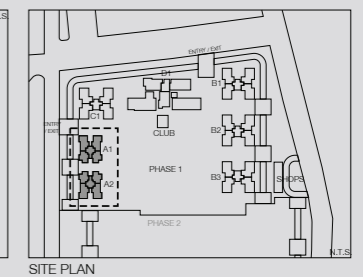
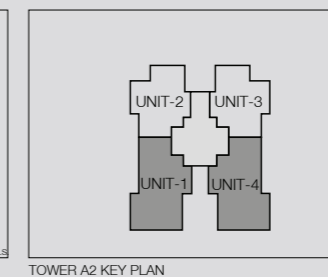
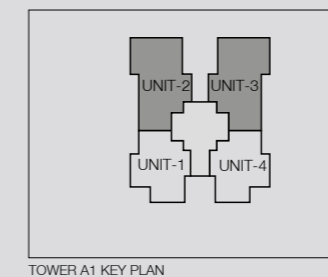
Towe A2: Unit 1 & 4

3 RHK

Unit Carpet Area: 83 SQ.M.

Exclusive Area: 19 SQ.M.

Total Area: 102 SQ.M.

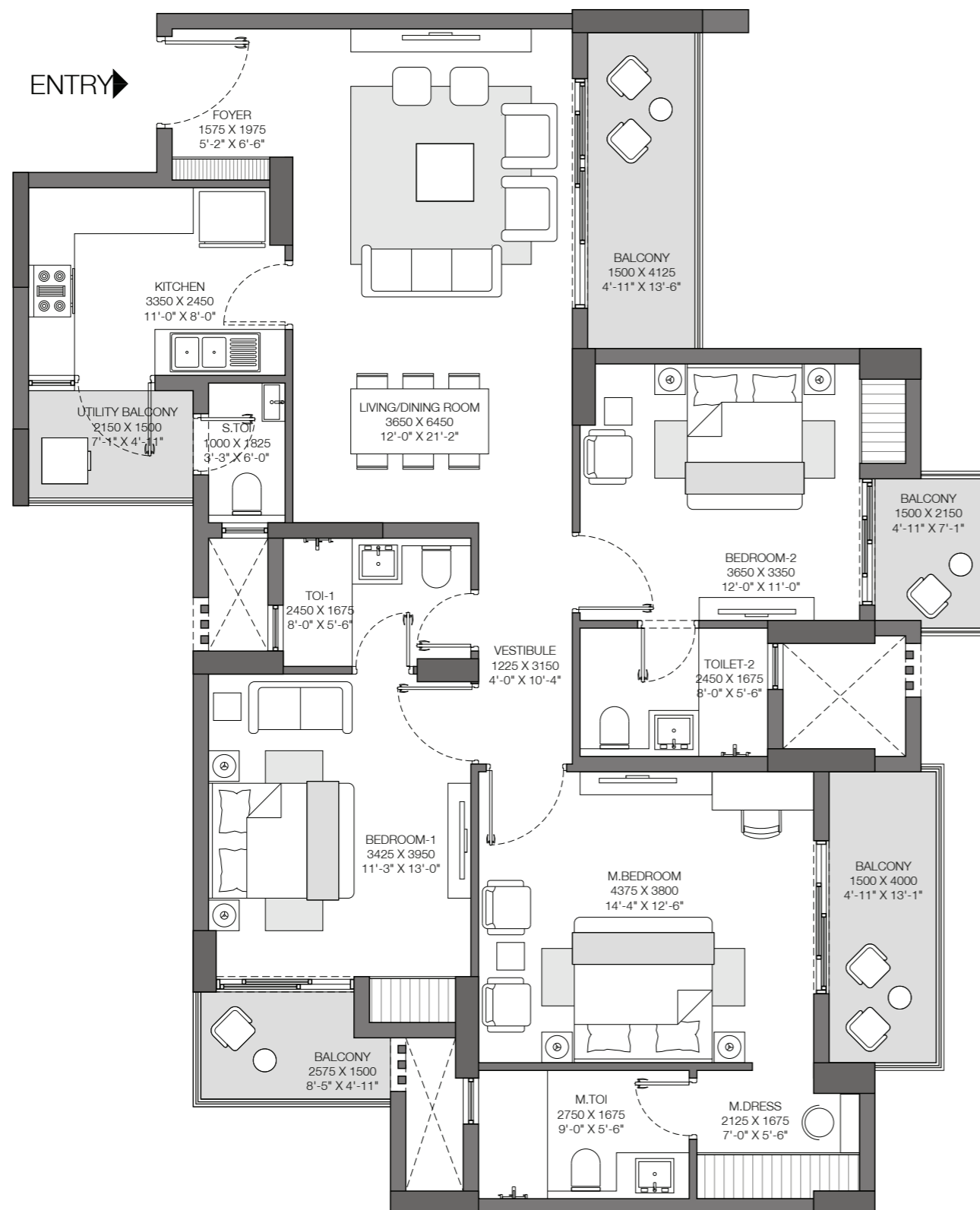


This is not an offer, an invitation to offer and/or commitment of any nature. This contains artistic impressions and no warranty is expressly or impliedly given that the completed development will comply in any degree with such artist's impression as depicted. The furniture, accessories, paintings, items, electronic goods, additional fittings/fixtures, decorative items, false ceiling including finishing materials, specifications, shades, sizes and colour of the tiles, etc. shown in the image are only indicative in nature and are only for the purpose of illustrating/indicating a conceived layout and do not form part of the standard specifications/amenities/services to be provided in the unit. All specifications of the unit shall be as per the final agreement between the Parties.

The present project is being developed by Brick Rise Developers Pvt. Ltd. (A subsidiary of Lotus Greens Constructions Pvt. Ltd.) who has appointed Godrej Properties Limited as the Development Manager for the same. IndusInd Bank Ltd. has sanctioned the construction finance for the present Project. The RERA registration number for this project is: GODREJ NEST Phase 1 UPRERAPRJ13521 on website- <http://up-rera.in>

GODREJ NEST

SECTOR 150, NOIDA



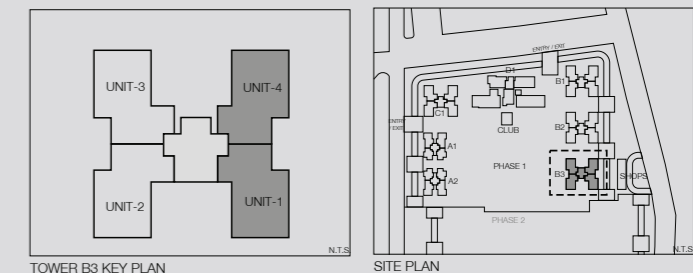
Tower B3: Unit 1 & 4

3 BHK + S. WC

Unit Carpet Area: 105 SQ.M.

Exclusive Area: 22 SQ.M.

Total Area: 127 SQ.M.

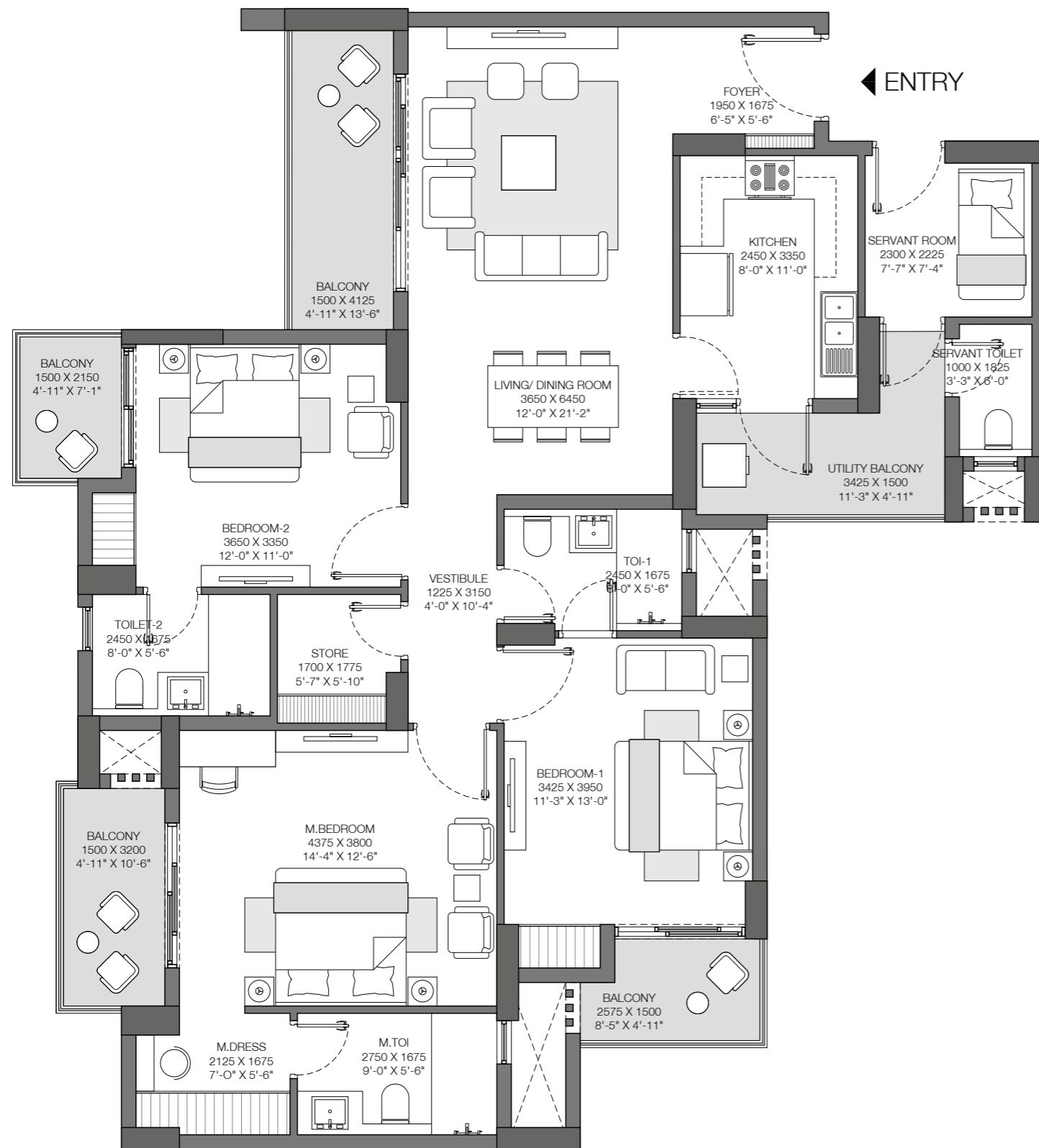


This is not an offer, an invitation to offer and/or commitment of any nature. This contains artistic impressions and no warranty is expressly or impliedly given that the completed development will comply in any degree with such artist's impression as depicted. The furniture, accessories, paintings, items, electronic goods, additional fittings/fixtures, decorative items, false ceiling including finishing materials, specifications, shades, sizes and colour of the tiles, etc. shown in the image are only indicative in nature and are only for the purpose of illustrating/indicating a conceived layout and do not form part of the standard specifications/amenities/services to be provided in the unit. All specifications of the unit shall be as per the final agreement between the Parties.

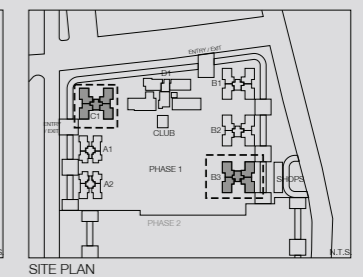
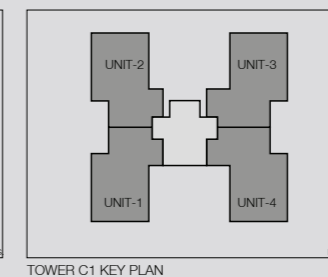
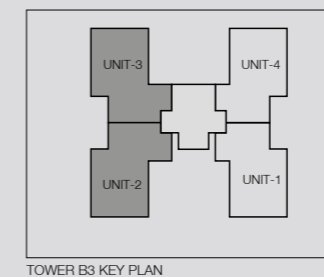
The present project is being developed by Brick Rise Developers Pvt. Ltd. (A subsidiary of Lotus Greens Constructions Pvt. Ltd.) who has appointed Godrej Properties Limited as the Development Manager for the same. IndusInd Bank Ltd. has sanctioned the construction finance for the present Project. The RERA registration number for this project is: GODREJ NEST Phase 1 UPRERAPRJ13521 on website- <http://up-rera.in>

GODREJ NEST

SECTOR 150, NOIDA



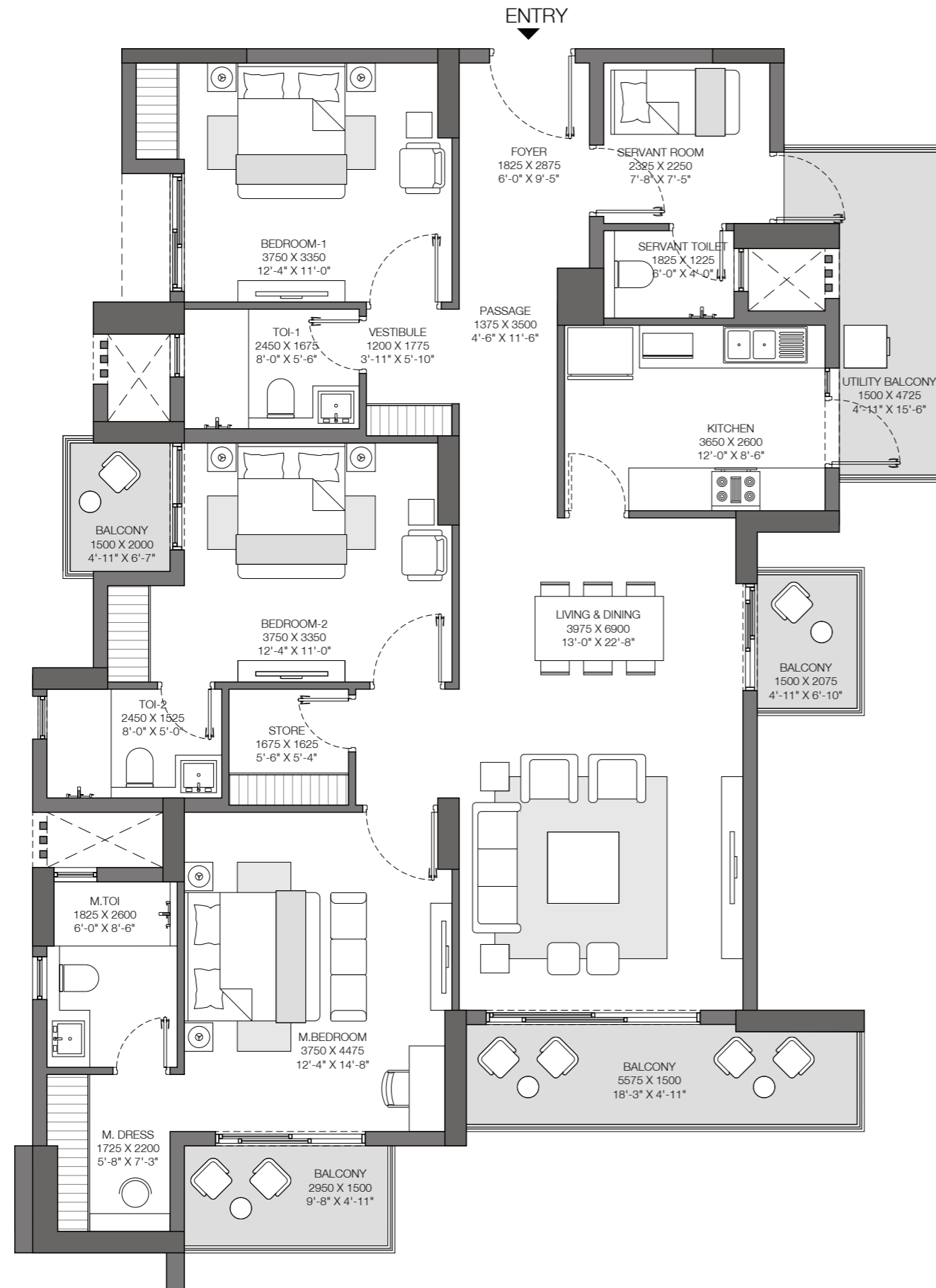
Tower B3: Unit 2 & 3
 Tower C1: Unit 1, 2, 3 & 4
 3 BHK + 2 STORE / UTILITY
 Unit Carpet Area: 114 SQ.M.
 Exclusive Area: 24 SQ.M.
 Total Area: 138 SQ.M.



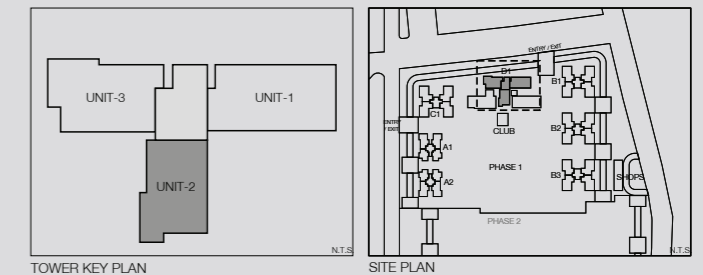
This is not an offer, an invitation to offer and/or commitment of any nature. This contains artistic impressions and no warranty is expressly or impliedly given that the completed development will comply in any degree with such artist's impression as depicted. The furniture, accessories, paintings, items, electronic goods, additional fittings/fixtures, decorative items, false ceiling including finishing materials, specifications, shades, sizes and colour of the tiles, etc. shown in the image are only indicative in nature and are only for the purpose of illustrating/indicating a conceived layout and do not form part of the standard specifications/amenities/services to be provided in the unit. All specifications of the unit shall be as per the final agreement between the Parties. The present project is being developed by Brick Rise Developers Pvt. Ltd. (A subsidiary of Lotus Greens Constructions Pvt. Ltd.) who has appointed Godrej Properties Limited as the Development Manager for the same. IndusInd Bank Ltd. has sanctioned the construction finance for the present Project. The RERA registration number for this project is: GODREJ NEST Phase 1 UPRERAPRJ13521on website- <http://up-rera.in>

GODREJ NEST

SECTOR 150, NOIDA



Tower D1: Unit 2
 ICONIC TOWER- 3 BHK+2 STORE/UTILITY
 Unit Carpet Area: 126 SQ.M.
 Exclusive Area: 26 SQ.M.
 Total Area: 152 SQ.M.

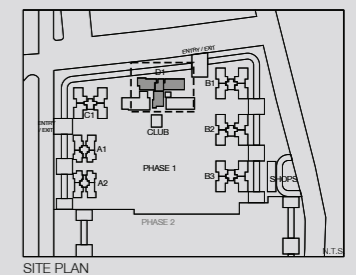
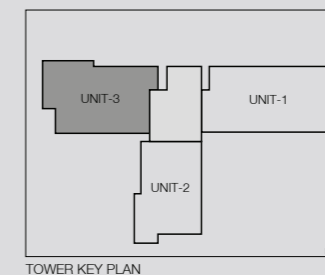
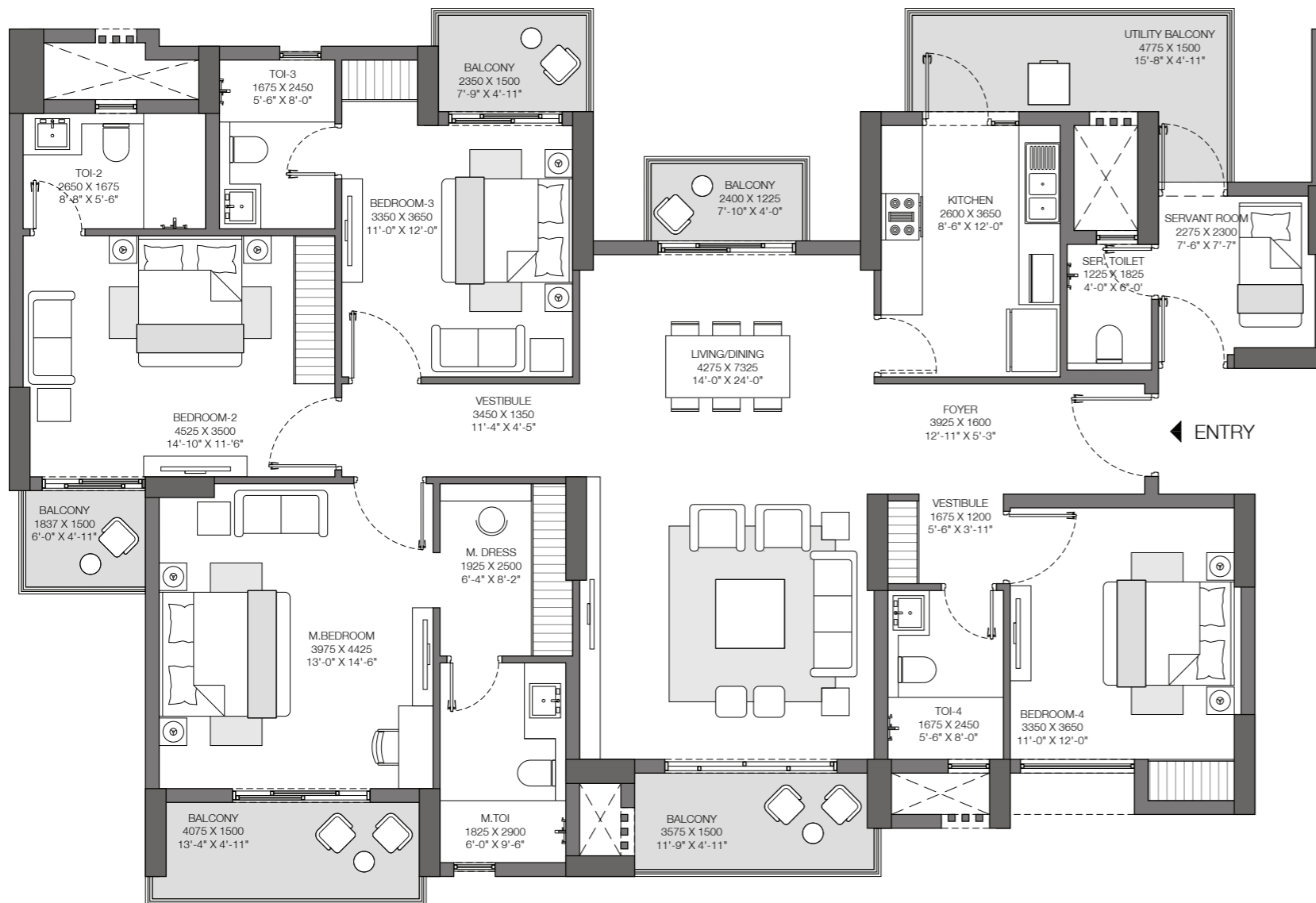


This is not an offer, an invitation to offer and/or commitment of any nature. This contains artistic impressions and no warranty is expressly or impliedly given that the completed development will comply in any degree with such artist's impression as depicted. The furniture, accessories, paintings, items, electronic goods, additional fittings/fixtures, decorative items, false ceiling including finishing materials, specifications, shades, sizes and colour of the tiles, etc. shown in the image are only indicative in nature and are only for the purpose of illustrating/indicating a conceived layout and do not form part of the standard specifications/amenities/services to be provided in the unit. All specifications of the unit shall be as per the final agreement between the Parties. The present project is being developed by Brick Rise Developers Pvt. Ltd. (A subsidiary of Lotus Greens Constructions Pvt. Ltd.) who has appointed Godrej Properties Limited as the Development Manager for the same. IndusInd Bank Ltd. has sanctioned the construction finance for the present Project. The RERA registration number for this project is: GODREJ NEST Phase 1 UPRERAPRJ13521 on website- <http://up-rera.in>

GODREJ NEST

SECTOR 150, NOIDA

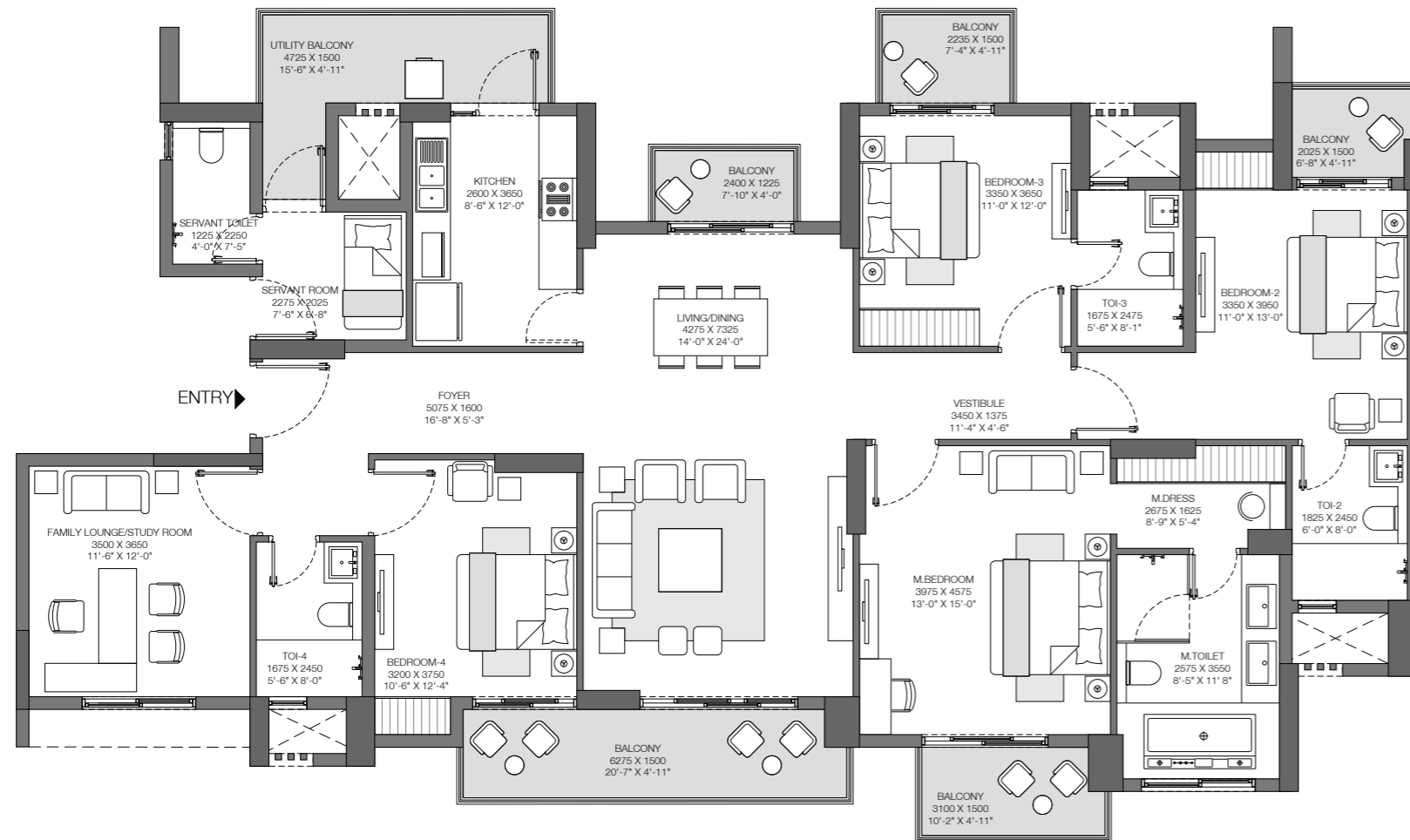
Tower D1: Unit 3
 ICONIC TOWER- 4 BHK+UTILITY/STORE
 Unit Carpet Area: 150 SQ.M.
 Exclusive Area: 29 SQ.M.
 Total Area: 179 SQ.M.



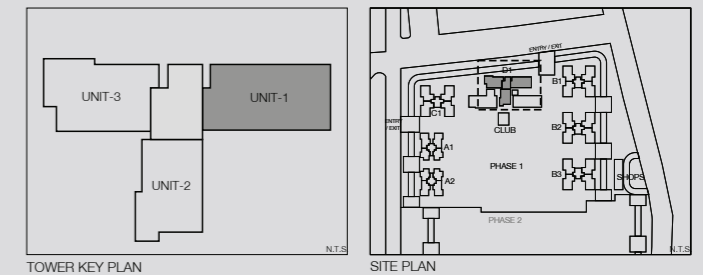
This is not an offer, an invitation to offer and/or commitment of any nature. This contains artistic impressions and no warranty is expressly or impliedly given that the completed development will comply in any degree with such artist's impression as depicted. The furniture, accessories, paintings, items, electronic goods, additional fittings/fixtures, decorative items, false ceiling including finishing materials, specifications, shades, sizes and colour of the tiles, etc. shown in the image are only indicative in nature and are only for the purpose of illustrating/indicating a conceived layout and do not form part of the standard specifications/amenities/services to be provided in the unit. All specifications of the unit shall be as per the final agreement between the Parties. The present project is being developed by Brick Rise Developers Pvt. Ltd. (A subsidiary of Lotus Greens Constructions Pvt. Ltd.) who has appointed Godrej Properties Limited as the Development Manager for the same. IndusInd Bank Ltd. has sanctioned the construction finance for the present Project. The RERA registration number for this project is: GODREJ NEST Phase 1 UPRERAPRJ13521 on website- <http://up-rera.in>

GODREJ NEST

SECTOR 150, NOIDA



Tower D1: Unit 1
 ICONIC TOWER - 4BHK+UTILITY/STORE +
 FAMILY LOUNGE/STUDY
 Unit Carpet Area: 169 SQ.M.
 Exclusive Area: 32 SQ.M.
 Total Area: 201 SQ.M.



This is not an offer, an invitation to offer and/or commitment of any nature. This contains artistic impressions and no warranty is expressly or impliedly given that the completed development will comply in any degree with such artist's impression as depicted. The furniture, accessories, paintings, items, electronic goods, additional fittings/fixtures, decorative items, false ceiling including finishing materials, specifications, shades, sizes and colour of the tiles, etc. shown in the image are only indicative in nature and are only for the purpose of illustrating/indicating a conceived layout and do not form part of the standard specifications/amenities/services to be provided in the unit. All specifications of the unit shall be as per the final agreement between the Parties. The present project is being developed by Brick Rise Developers Pvt. Ltd. (A subsidiary of Lotus Greens Constructions Pvt. Ltd.) who has appointed Godrej Properties Limited as the Development Manager for the same. IndusInd Bank Ltd. has sanctioned the construction finance for the present Project. The RERA registration number for this project is: GODREJ NEST Phase 1 UPRERAPRJ13521 on website- <http://up-rera.in>

Thank You



+91 8586866824