



PASSION AT WORK

SOBHA CITY

Chintels Metropolis, Sector-108
Gurgaon

 +91 8586866824

FLOOR PLANS

SOBHA CITY
THE FLOOR PLANS

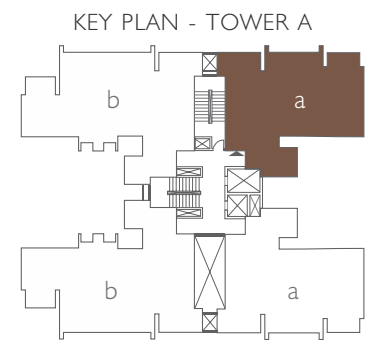
TOWER A

TENTATIVE SBA - 128 SQ.MT. (1381.01 SQ.FT.)



UNIT TYPE 'a'

-
- 2 BEDROOMS
-
- LIVING AND DINING
-
- KITCHEN
-
- 2 BALCONIES
-
- 2 TOILETS
-
- UTILITY SPACE
-



SOBHA CITY THE FLOOR PLANS

TOWER A & B

TENTATIVE SBA - 158 SQ.MT. (1711.29 SQ.FT.)



UNIT TYPE 'b'

- 3 BEDROOMS
- LIVING AND DINING
- KITCHEN
- 2 BALCONIES
- 3 TOILETS
- UTILITY SPACE

SOBHA CITY THE FLOOR PLANS

TOWER B

TENTATIVE SBA - 186 SQ.MT. (2003.45 SQ.FT.)



UNIT TYPE 'c'

3 BEDROOMS

LIVING AND DINING

KITCHEN

FAMILY LOUNGE / LOBBY

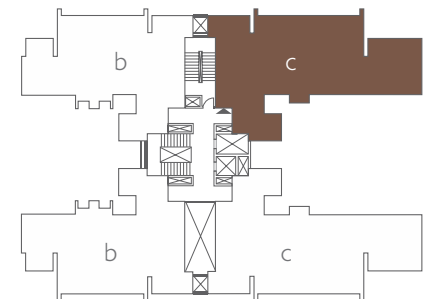
2 BALCONIES

3 TOILETS

POWDER ROOM

UTILITY SPACE

KEY PLAN - TOWER B



SOBHA CITY
THE FLOOR PLANS

TOWER C

TENTATIVE SBA - 192 SQ.MT. (2072.90 SQ.FT.)



UNIT TYPE 'd'

3 BEDROOMS

MASTER BEDROOM WITH WALK-IN CLOSET

LIVING AND DINING

KITCHEN

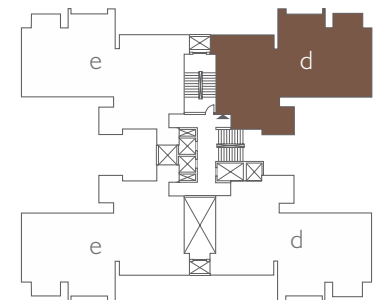
2 BALCONIES

3 TOILETS

POWDER ROOM

UTILITY SPACE

KEY PLAN - TOWER C



SOBHA CITY THE FLOOR PLANS

TOWER C

TENTATIVE SBA - 217 SQ.MT. (2343.44 SQ.FT.)



UNIT TYPE 'e'

3 BEDROOMS

MASTER BEDROOM WITH
WALK-IN CLOSET

LIVING AND DINING

KITCHEN

HOME OFFICE

2 BALCONIES

3 TOILETS

POWDER ROOM

UTILITY SPACE



SOBHA CITY

Chintels Metropolis, Sector-108
Gurgaon

OFFICE ADDRESS

SOBHA Limited,
5th Floor, Rider House, Plot No. 136-P,
Sector-44, Gurgaon-122003, Haryana

SOBHA CITY ADDRESS

SOBHA Sales Gallery
Sector-108, Gurgaon-122017

 +91 8586866824

Disclaimer

1. The sizes / shapes / positions of openings, ducts, balconies and landscape are subject to change
2. Room sizes indicated are structural sizes and actual sizes may vary due to finishes
3. Areas mentioned are subject to change after finalization of services and structural design
4. The furniture shown in the drawing is only to indicate the space available and the likely position of electrical points

All plans, specifications, artistic renderings and images as shown in this brochure are only indicative and are subject to change as may be decided by the company or directed by any competent authority in the best interests of the development. Soft furnishing, furniture and gadgets do not form a part of the offering.